

MAXIDISC II

REV 2021



INSTRUCTIONS AND SPARE PARTS MANUAL



CONGRATULATIONS!

You have just acquired an Ovlac Maxidisc II!

As Spain's largest producer of agricultural machinery for soil tillage, we feel honoured that you have chosen Ovlac as your trusted choice.

After many years of experience in the field, we make sure that you will be proud of your purchase in the same way that we are proud of the product we have created under the strictest quality standards.

For the correct use and enjoyment of this equipment, we strongly recommend that the customer read the instructions contained in this manual and use it as a reference for any questions that may arise regarding the operation of your Ovlac equipment.

Sincerely yours: Jorge Calvo

CEO of Ovlac



CONSIDERATIONS

This instruction manual describes the Operating and Maintenance Instructions and Spare Parts for the indicated equipment.

This agricultural equipment, called XLANDER, is designed for tilling the soil, applied to a Tractor with lifting gear and universal threepoint linkage.

The proper functioning of the machine depends on its correct use. It is therefore advisable to read the instructions given in this manual carefully in order to avoid any inconvenience that could impair the proper functioning and durability of the machine.

It is also important to follow the instructions in the manual, as the Manufacturer declines all responsibility for negligence and non-observance of these instructions.

The Manufacturer is at your disposal to guarantee immediate and accurate technical assistance and to provide all that may be necessary for a better functioning and performance of the machine.

The Manufacturer reserves the right to modify the Machine without the need to urgently update this publication.



INDEX

- 1.- Security Rules
- 2.- Description and technical data
- 3.- NON STOP Security Systems
- 4.- Turn up
 - 4.1.- Adaptation to the tractor
 - 4.2.- Alignment
 - 4.3.- Other adjustments
- 5.- Working depth
- 6.- Transport and parking
 - 6.1.- Hydraulic functions
- 7.- Maintenance
- 8.- Optional Equipment
- 9.- Spare parts



1.- Security Rules

Read carefully all the instructions for use of the cultivator.

The manufacturer declines all responsibility for any inconvenience caused by NOT observing the Safety and Accident Prevention Regulations described below.

- 1.- Pay attention to the danger and warning symbols shown in this manual and indicated on the equipment.
- 2.- Repairs and adjustments to the equipment must always be carried out with the engine stopped and the tractor locked.
- 3.- It is strictly forbidden to transport people or animals on the equipment.
- 4.- It is strictly forbidden to entrust the driving of the tractor, with the equipment hooked up, to people without a driving license, inexperienced, or who are not in good condition.
- 5.- Scrupulously observe all the accident prevention measures recommended and described in this manual.
- 6.- The application of additional equipment to the tractor implies a different weight distribution on the tractor axles.
- 7.- Before putting the tractor and the equipment into operation, check that all the safety elements for transport and use are in perfect condition.
- 8.- The symbols with warnings displayed on the equipment give the appropriate suggestions for the use of the same.
- 9.- To circulate on the road, it is necessary to observe the rules of circulation according to the country where it's operated.
- 10.- Respect the maximum weight foreseen on the tractor, the total mobile weight, the transport regulations and the road code.
- 11.- Before starting to work, familiarise yourself with the control devices.
- 12.- Pay the utmost attention to hitching and unhitching the equipment.
- 13.- Never leave the driving position when the tractor is in motion.
- 14.- Remember that road adherence, steering and braking capacity may vary significantly due to the presence of suspended equipment.
- 15.- It is strictly forbidden to remain in the area of action of the equipment.
- 16.- Before leaving the tractor, lower the suspended equipment, stop the engine, apply the parking brake, and remove the ignition key from the dashboard.
- 17.- The category of the hitch pins of the equipment must correspond to that of the linkage of the lift.
- 18.- Pay maximum attention when working in the area of the arms of the tractor, it is a very dangerous area.
- 19.- It is strictly forbidden to stand between the tractor and the equipment to manoeuvre the external lifting control.
- 20.- During road transport with the equipment suspended, put the control lever of the hydraulic lift in the locking position.
- 21.- The spare parts must correspond to the requirements defined by the Manufacturer. Always use original spare parts.
- 22.- The safety instruction decals must always be clearly visible. Clean and replace them if they are not legible (You can ask your dealer for them).
- 23.- The instruction manual must be kept for the whole life of the equipment.



(Fig.1) WARNING

Before starting to work, read the instructions in the manual.

DANGER

Do not handle the equipment when it is suspended, danger of crushing. Maintain the safety distance.

DANGER

Lifting the equipment can cause injuries due to reaching. Maintain the safety distance.

To be ready in case of an emergency

Keep a first aid kit and fire extinguisher on hand. Write down the telephone numbers of doctors, ambulance and fire brigade and keep them near the phone.

Use adequate clothes

Avoid loose clothing and use appropriate safety equipment depending on the type of work. Safe operation of the machine requires the full attention of the operator.

Don't use headphones for listening to the radio while working with the machine.

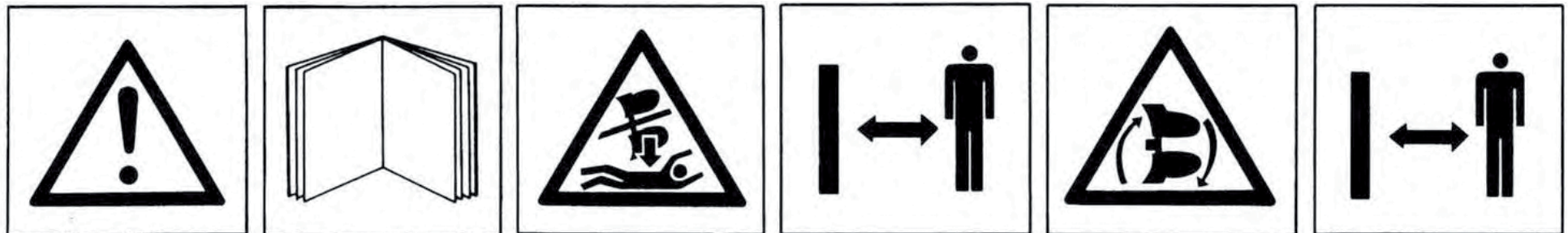
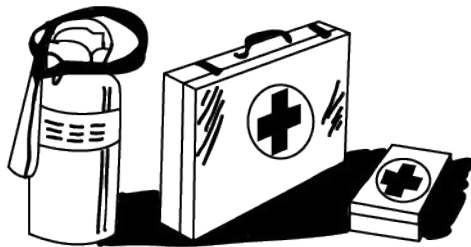


Fig.1



SPECIFIC INSTRUCTIONS FOR WELDING REPAIRS

When repair by welding is authorised by the manufacturer, the following points shall be taken into account generally. In particular cases, appropriate welding instructions shall be provided for each application.

1 Repair welding should be carried out by qualified welders and in accordance with good technical and safety code practice.

2 Before welding repairs, remove paint, rust, dirt or any other substances harmful to the weld.

3 To avoid damage to mechanical or hydraulic components such as bearings, shafts, hydraulic actuators, hydraulic systems, etc., care should be taken to place the earth connection in an area of good contact, free of paint and rust.

On machines with hydraulic cylinders, we must ensure that the welding current does not flow through such elements. For this purpose, the earth connection shall be placed on the same part of the machine to be repaired.

4 Our machines are made of high elastic limit (HEL) steels, which means that special attention must be paid to welding processes and filler materials. In general, basic coated electrodes E7016 or E7018 will be used. For the MAG (semi-automatic) welding process, ER70S6 wire and Ar+20CO₂ will be used as shielding gas. In both cases, follow the recommendations for drying times and temperatures recommended by the manufacturers of the filler material.

5 When the parts to be welded are thicker than 15 mm, or the ambient temperature is lower than 15 C, preheating by flame between 75-100 C is recommended.

6 It is strictly forbidden to cool welding seams with water, air or any other substance.

In case of questions during repair, please contact the manufacturer via the usual means of communication.

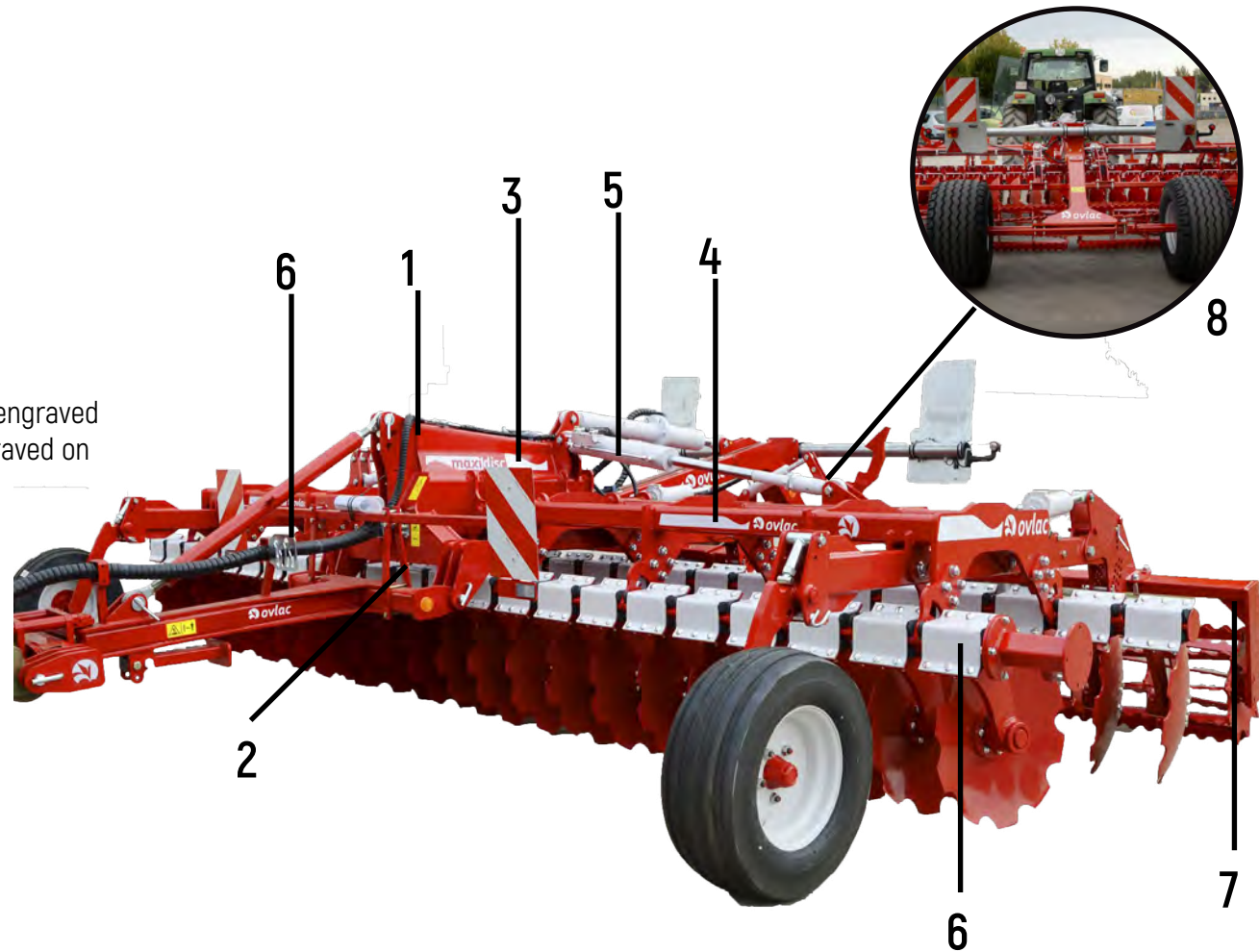


2.- Description and Technical Data

1. HEADSTOCK
2. IDENTIFICATION PLATE*
3. CENTRAL FRAME
4. SIDE FRAME
5. FOLDING CYLINDERS
6. SECURITY SYSTEM
7. ROLLERS
8. SET OF WHEELS

Note: the number of the plough's manufacture, engraved on the nameplate, must match the number engraved on the headstock's support.

*2. Identification plate



Technical Data

MAXIDISC II MOUNTED	MAXIDISC-II 250	MAXIDISC-II 300	MAXIDISC-II 350	MAXIDISC-II 400-P	MAXIDISC-II 450-P	MAXIDISC-II 500-P	MAXIDISC-II 550-P	MAXIDISC-II 600-P
Working Width	2,40	3	3,50	4	4,50	5	5,50	6
Transport Width	2,70	3,05 / 3,30 (1)	3,70			2,55		
Recommended Power (CV)	80-100	90-120	110-140	130-160	150-180	170-200	180-220	200-250
Disc spacing (cm)	13 cm							
Tine spacing (cm)	100 cm							
Underbeam clearance (cm)	83 cm							
Discs Angle	17° in advance / 6,3° of inclination							
Security	40 mm rubber blocks with anti-slide knob							
Discs	20	22	26	30	34	38	42	46
Standard roller	400 mm notched or 480 mm bars							
Weight with standard roller	1.770/2.020	1.960/2.235	2.255/2.580	2.425/2.975	2.925/3.350	3.010/3.710	3.560/4.085	3.885/4.460

(1) Standard with 3,00 m roller. 3,3 m roller optional at the same price. Indicate in the order.

MAXIDISC II TRAILED	MAXIDISC-II 400-P	MAXIDISC-II 450-P	MAXIDISC-II 500-P	MAXIDISC-II 550-P	MAXIDISC-II 600-P
Working Width	4	4,50	5	5,50	6
Transport width	2,55				
Recommended Power (CV)	130-160	150-180	170-200	180-220	200-250
Discs spacing (cm)	13 cm				
Tine spacing (cm)	100 cm				
Discs angle	17° in advance / 6,3° of inclination				
Weight with standard roller (20"/24")	3.425/3.975	3.925/4.350	4.010/4.710	4.560/5.085	4.885/5.460
Standard wheels	500/50 17"				

MAXIDISC II GC	MAXIDISC-II 700-GC	MAXIDISC-II 800-GC	MAXIDISC-II 900-GC
Working Width	7	8	9
Transport Width	3,02		
Recommended Power (CV)	200-250	230-280	240-300
Discs spacing (cm)	13 cm		
Tine spacing (cm)	100 cm		
Discs Angle	17° en avance / 6,3° de inclinación		
Standard roller	Muecas 400 mm o barras de 480 mm		
Standard wheel	560/45 R 22.5"		



3.- Non-Stop Security Systems

The different Non-Stop security systems (Leafspring / Rubber shock absorber) act automatically. When the share meets an obstacle, the systems gives up, elevating and saving the arm, getting back to its original position without stopping the tractor.

This way, every impact caued by uneven terrain will be absorbed by the security system, which protects the elements of the machine, and therefore, also the tractor.

For the same reason, Non-Stop security systems decreases the traction effort by avoiding the tractor HAVING TO OVERCOME every obstacle and having an uniform labor.

Note: OVLAC Non-Stop security system are factory-regulated with an optimum pressure for midhardness terrains.



Fig. 2

4.- Turn Up

4.1 - Adaptation to the tractor

OVLAC short disc harrows are designed to adapt to the 3 universal points of any tractor.

Before linking the machine check that:

- The tractor arms are regulated at the same length and height.
- Tractor wheels have the same pressure and this is adequate according to the manufacturer rules.
- Tractor arms must be centered with a slight margin for oscillating.



4.2 - Alignment

The Short Disc Harrow must work aligned with the tractor, or this will tend to abandon the tractor's straight. Must check that the $A_1 = A_2$ (Fig. 3).

On the short disc harrows of Ovlac, the drifting effect is auto-corrected thanks to the oscillating shaft. On the short disc harrows with fixed link, you must act over the tensor (opcionaly, hydraulic cylinder) that corrects the drift.

The third point arm must be coupled in a way that the end that links over the disc harrow remains slightly higher than the end that links to the tractor (Fig. 4).



Fig. 3

To the tractor in a descendant way.

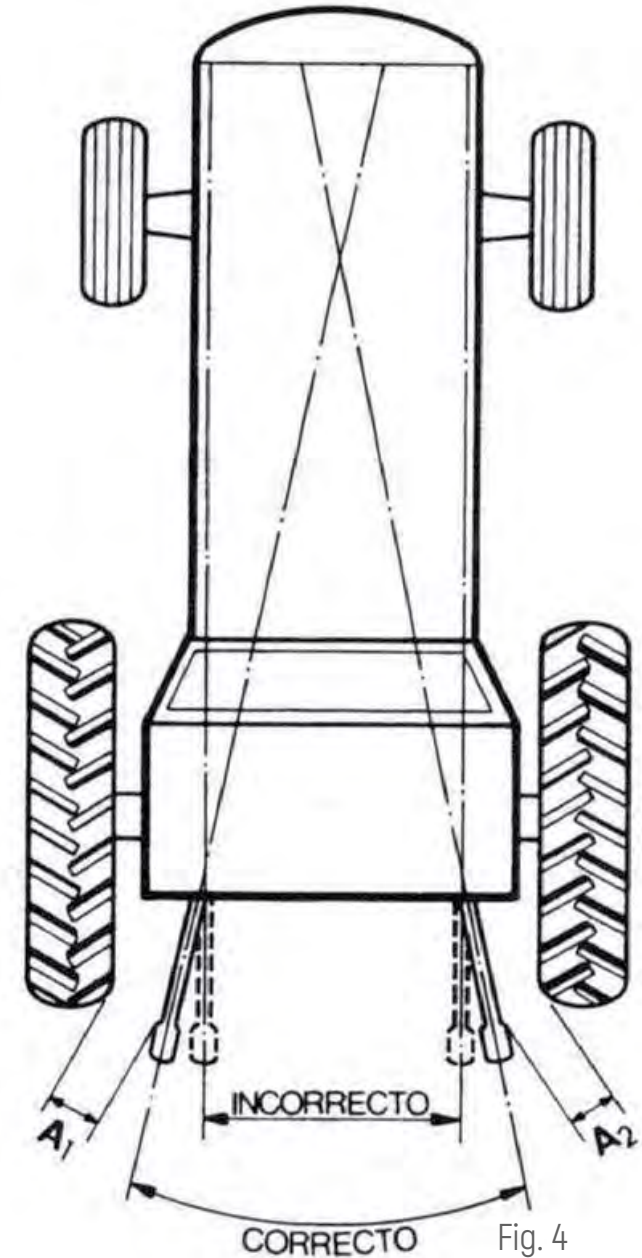


Fig. 4



4.3 - Other adjustments

The length of the 3rd point must be adjusted in a way that the frame adopts a parallel position to the ground, if not, the rows of arms will work at uneven depths, causing a wrong labor. (Fig. 6)

For the same reason, is necessary for the tractor arms to be found at the same height, so the machine works at the same depth in its whole width (Fig. 7) and side triggers doesn't happen, so the tractor doesn't find it hard to keep its path. (Fig. 7)

IMPORTANT: Must try not totake curves while working, specially with very heavy machinery, since the pulling effort may cause severe damage to the machine's structure.

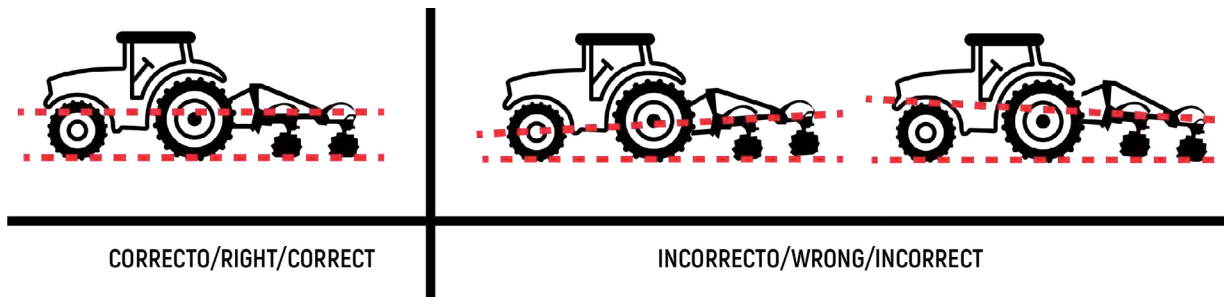


Fig. 5

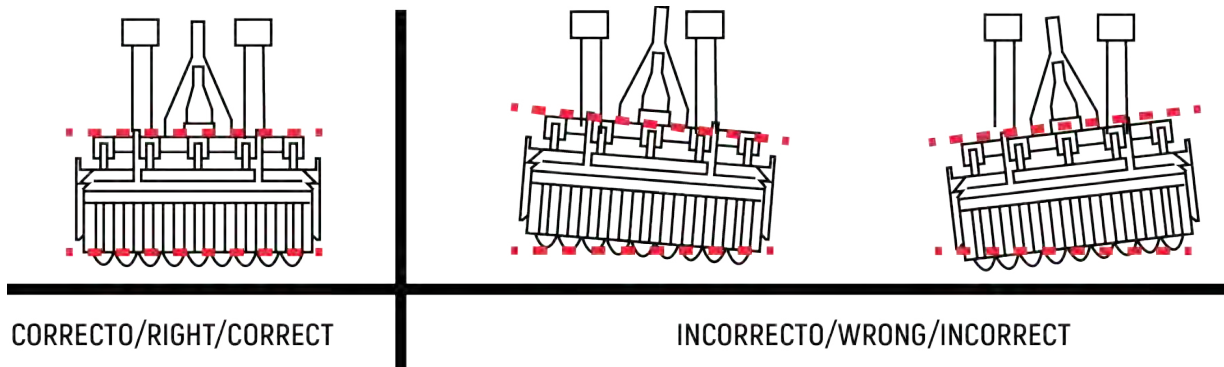


Fig. 6



5.- Working depth

The working depth is regulated by the standard roller, through the regulation bolts A (Fig.7).

In no case the working depth will be such that the disc' bushings are not far enough from the terrain, watching that those never get to touch the ground.



Fig. 7

A



Fig. 8

B



6.- Transport

In the machines with hydraulic folding, this will be retracted in order to ease the transport of the machine with its minimal width. (Fig. 9)



Fig. 9

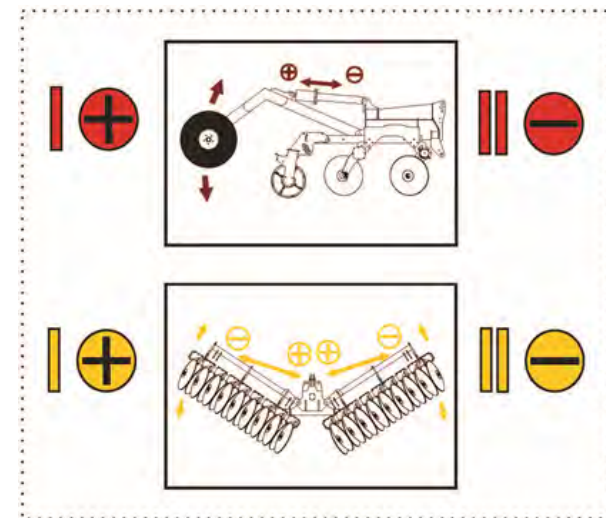


Fig. 10

6.1- Hydraulic Functions

There's 2 hydraulic functions available:

1. Red: Elevate/Lower the trail kit, in order to regulate the height of the machine.
2. Yellow: Fold/unfold the machine for Work (folding cylinders stretched) –Transport (retracted cylinders)



7.- Maintenance

Must check how tighten the bolts are after the first 2 hours of labor, specially the ones on the bodies and shares. Afterwards, check every 100 hours of labor. When finishing the campaign, wash the plough and grease the bodies to avoid rust.

Lube: Greasing points must be greased up regularly.

Safe maintenance

Get familiar with the maintenance procedures before doing any labor. The working area must be clean and dry. Not doing any greasing labor, repair or adjustment while the engine is running. Keep the hands, feet, and clothes always far from the moving components. Place all the hydraulic controls on neutral-gear in order to relieve pressure. Lower all gear to the ground.

All the components must be in good shape and correctly installed. Repair damage immediately. Change any wasted or broken piece. Keep all the components of the machine clean off of grease, oil and accumulated dirt.

By dealing with trailed equipment, disconnecting the group of cables from the tractor before doing any welding on the machine.

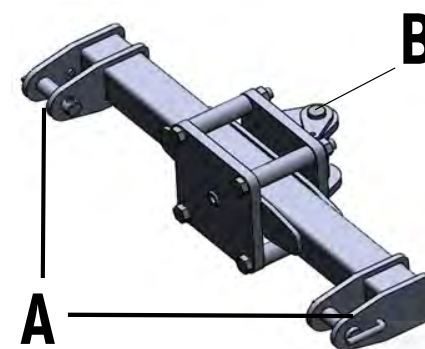
Watch out for the high pressure leaks

Leaking fluids from the system might leak strong enough to tear flesh, causing severe injuries. Therefore, is indispensable to leave the system pressure-less before loosing or disconnecting any pipe and assure that all the connections and connectors are well-tighten before applying pressure to the system.

In order to locate an hydraulic oil leak use a piece of cardboard placed in between the connections. Don't get near high-pressure leakings.

Even if after all this measures an accident happens, go immediately to see a doctor, who should remove the fluid surgically in a few hours in order to avoid gangrene. Unexperienced doctors with injuries of such nature may go to a specialized medical center.

Maintenance of hydraulic cylinders. **IMPORTANT:** keep the plugs clean. Abrasive particles, such as sand, metal sharps, may damage the cylinders, causing inner leaks. Once unplugged off the tractor, place the protection bolts and make sure they're not touching the ground.



LINKING BOLTS

The linking bolts A and the turning bolt B's must be made of: F-125 TREATED of diameter 36 and 40 respectively.

Para el correcto ajuste y funcionamiento los bulones serán sustituidos cuando la holgura entre el bulón y el alojamiento supere los 2 mm.



8.- Optional equipment

Ovlac's Maxidisc II can be equipped with:

1. Sideplates (Fig.11)
2. Left Side Disc. (Fig.12)
3. Side wheels. (Fig.13)
4. In-between tine harrow. (Fig. 14)
5. Trailed kit. (Fig. 15)
6. Signs and lights . (Fig. 15)



Fig. 14

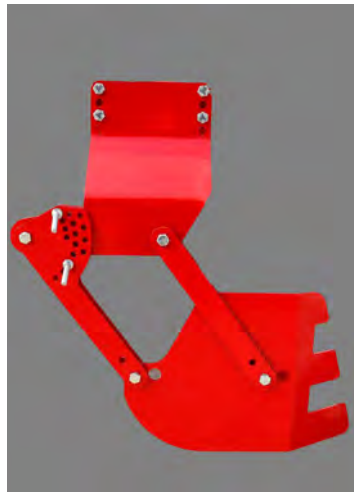


Fig. 11



Fig. 12



Fig. 13



Fig. 15



9.- Spare parts

Spare parts orders must always be placed through dealers and will include the next indications:

- Type, model and plough's number of manufacturing. This data is indicated on the identification plate of the plough.
- Reference of the piece. Indicated on the spareparts catalogue.
- Name of the piece and quantity required.
- Method of shipping. Transport expenses run of the purchaser.
- NOTE: The terms left or right, indicated on the name, are meant to be understood always facing the plough from its rear view. When it comes to supposed-to-break gear, rights are considered ll those that are part of the body that drifts to the right and viceversa.
- Note on warranty: must be clearly specified if the spare parts order are ordered under warranty time. The manufacturer will be the one to decide if the order stands to warranty or not when replacing the pieces. Plus, warranty loses all its value if:
 - Repairs Unauthorized by the manufacturer are made, unoriginal spare parts and bolts are inadequate.
 - User goes through the power limit stated on the technical data sheet, or abnormal maneuvers are made.

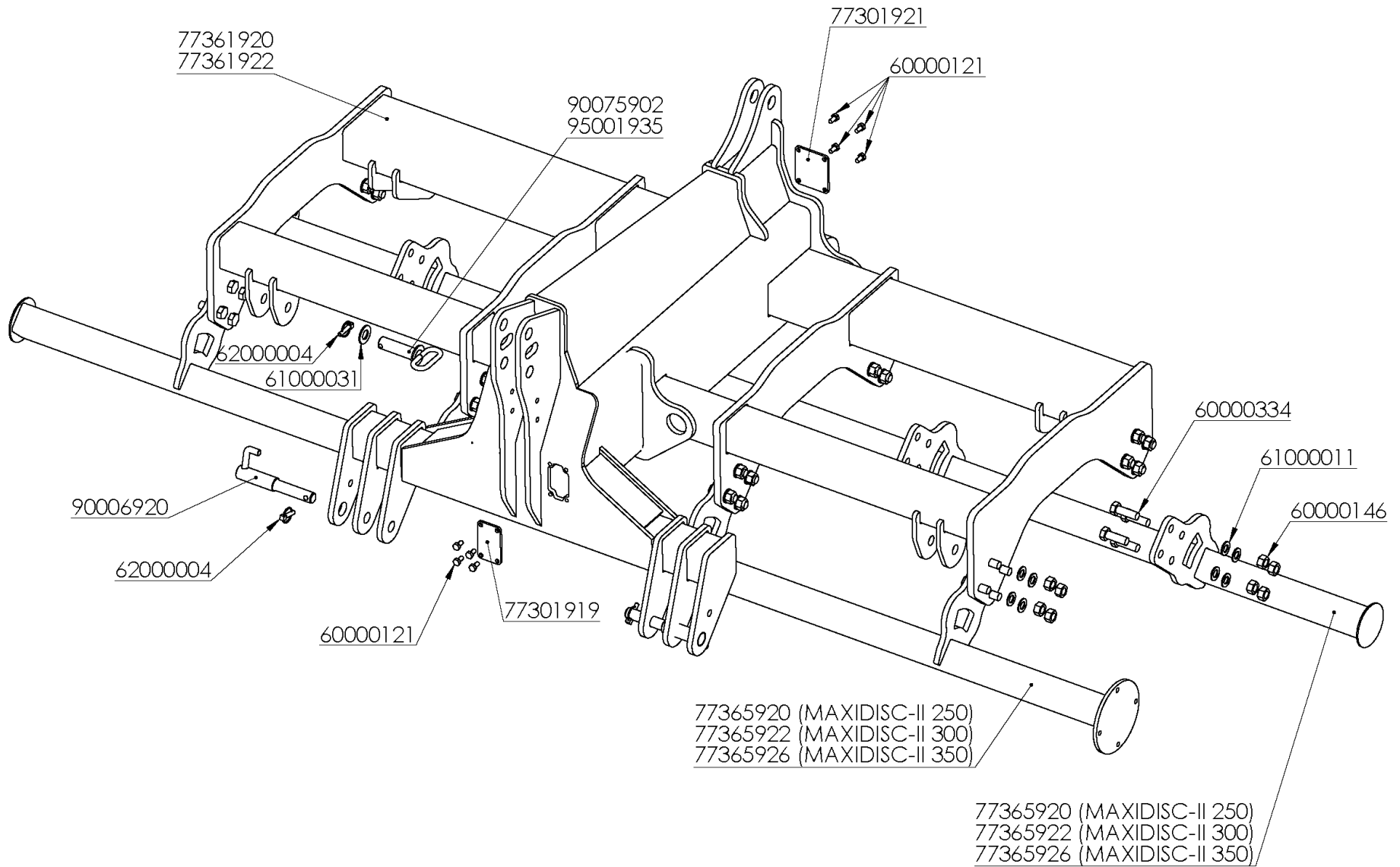


Index

BEAM / FRAME.....	17
FOLDING BEAM / FRAME.....	19
FOLDING HYDRAULIC SYSTEM.....	21
FOLDING LOCKING SYSTEM	25
24" BODY ASSEMBLY MAXIDISC II.....	27
20" BODY ASSEMBLY MAXIDISC II.....	29
ROLLER HOLDER	31
ROLLER ASSEMBLY.....	33
V ROLLER.....	37
RUBBER ROLLER	39
LEAF-SPRINGS ROLLER.....	41
T RING ROLLER.....	43
SKIRTS / DEFLECTORS ASSEMBLY	47
EDGE / LATERAL DISC	49
SIGNALLING KIT FIX MODEL.....	51
SIGNALLING KIT FOLDABLE MODEL	53
FRONT TOWING KIT	55
REAR TOWING KIT	57
HYDRAULIC SYSTEM TOWING KIT	59
FRONT SIGNALLING KIT	61
REAR SIGNALLING KIT.....	63
FRONT WHEEL MAXIDISC II (>21)	65
FRONT WHEEL MAXIDISC II (>21)	67



BEAM / FRAME

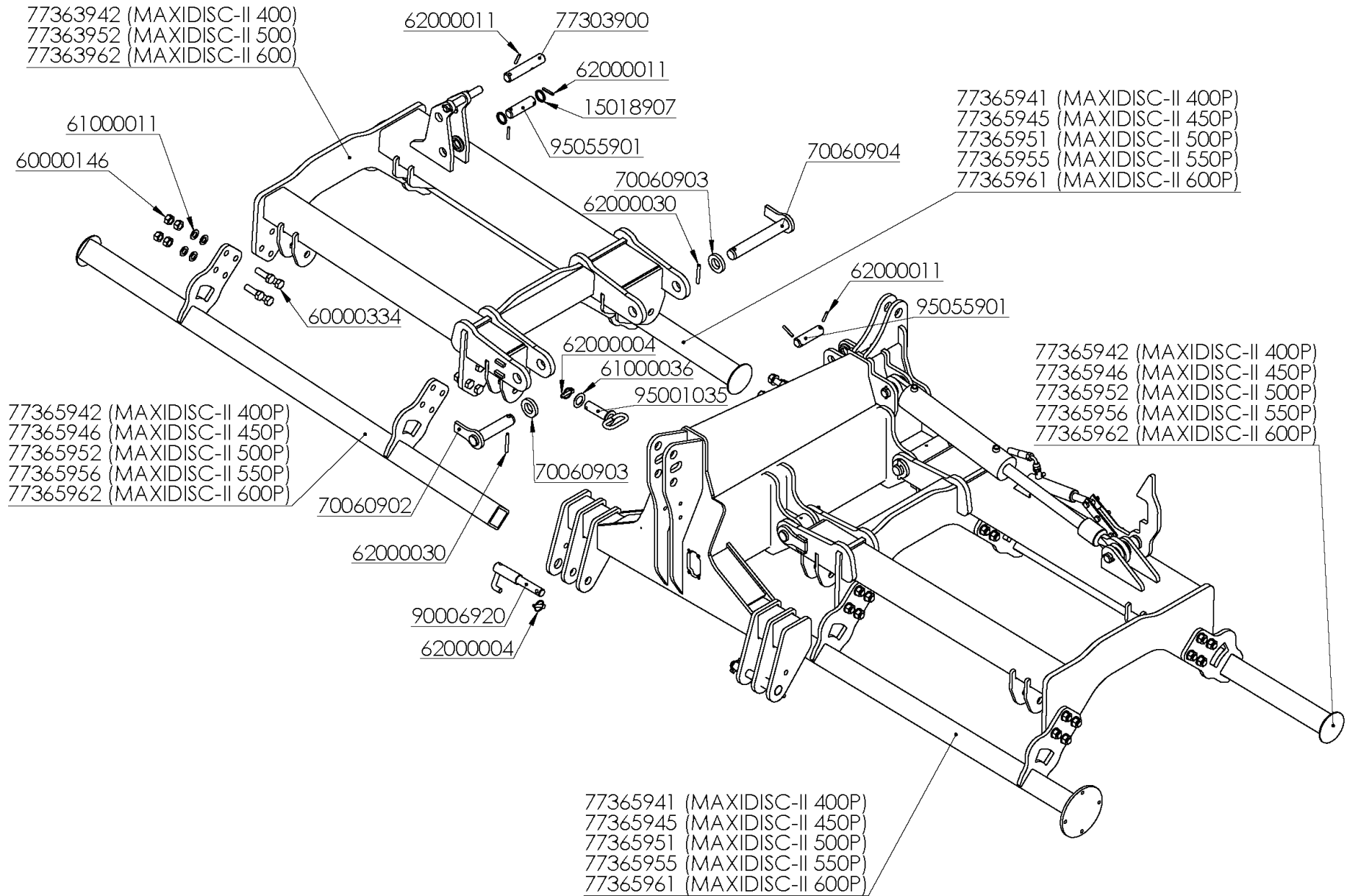


BEAM / FRAME

REFERENCIA	DESCRIPCIÓN
60000121	TORN.EXAG.DIN-933 10* 20 8.8 ZINC.
60000146	TUER.AUTO.DIN-980 20 10.9 ZINC.
60000334	TORN.EXAG.DIN-931 20* 60 8.8 ZINC.
61000011	ARAND.DIN-125 20 ZINC.
61000031	ARAND.STANDAR S/BISEL CL-26 ZINC.(50x27x3)
62000004	PASADOR ANILLA 10 ZINC.
77301919	TAPA ANTERIOR BASTIDOR MAXIDISC
77301921	TAPA POSTERIOR BASTIDOR MAXIDISC
77361920	BAST. MAXIDISC-II 20
77361922	BAST. MAXIDISC-II 22/26
77365920	PAÑO.MAXIDISC-II 250/20
77365922	PAÑO.MAXIDISC-II 300/22
77365926	PAÑO.MAXIDISC-II 350/26
90006920	BULON D=36/28*205mm.ENG.MAXIDISC/VBC/MCH-PV
90075902	BULON D=25*110mm.3er.PTO.CAT.II ZINC.
95001935	BULON D=31,2*115mm.3er.PTO.PENT.CAT.III (D/02)



FOLDING BEAM / FRAME



FOLDING BEAM / FRAME

REFERENCIA	DESCRIPCIÓN	REFERENCIA	DESCRIPCIÓN
15018907	CASQ.D=45/35*5 SEP.PLEGADOS.CICRO	77363962	BAST.DCHO.MAXIDISC-II 600
60000146	TUERC AUTO.D IN-980 20 10.9 ZINC .	77365941	PAÑO.MAXIDISC-II 400P/30 DI/TD
60000334	TORN.EXAG.DIN-931 20* 60 8.8 ZINC .	77365942	PAÑO.MAXIDISC-II 400P/30 DD/TI
61000011	ARAND.DIN-125 20 ZINC .	77365945	PAÑO.MAXIDISC-II 450P/34 DI/TD
61000036	ARAND.ESTANDAR-A 32 ZINC .	77365946	PAÑO.MAXIDISC-II 450P/34 DD/TI
62000004	PASADOR ANILLA 10 ZINC .	77365951	PAÑO.MAXIDISC-II 500P/38 DI/TD
62000011	PASADOR ELAST. DIN-1481 8* 50 ZINC .	77365952	PAÑO.MAXIDISC-II 500P/38 DD/TI
62000030	PASADOR ELAST. DIN-1481 10* 80 ZINC .	77365955	PAÑO.MAXIDISC-II 550P/42 DI/TD
70060902	BULON D =40*194mm.PLEG.CH/MCH/DISC	77365956	PAÑO.MAXIDISC-II 550P/42 DD/TI
70060903	ARAND.P/BULON PLEG.CH/MCH/DISC	77365961	PAÑO.MAXIDISC-II 600P/46 DI/TD
70060904	BULON D=40*294mm.PLEG.MAXIDISC	77365962	PAÑO.MAXIDISC-II 600P/46 DD/TI
77303900	BULON D=34,8*180mm.TRANQUE MAXIDISC + DACROMET	90006920	BULON D=36/28*205mm.ENG.MAXIDISC/VBC/MCH-PV
77363942	BAST.DCHO.MAXIDISC-II 400	95001035	BULON D=31,2*115mm.
77363952	BAST.DCHO.MAXIDISC-II 500	95055901	BULON D=34,8*122mm.CIL.BAST.TElesc.SS + DACROMET

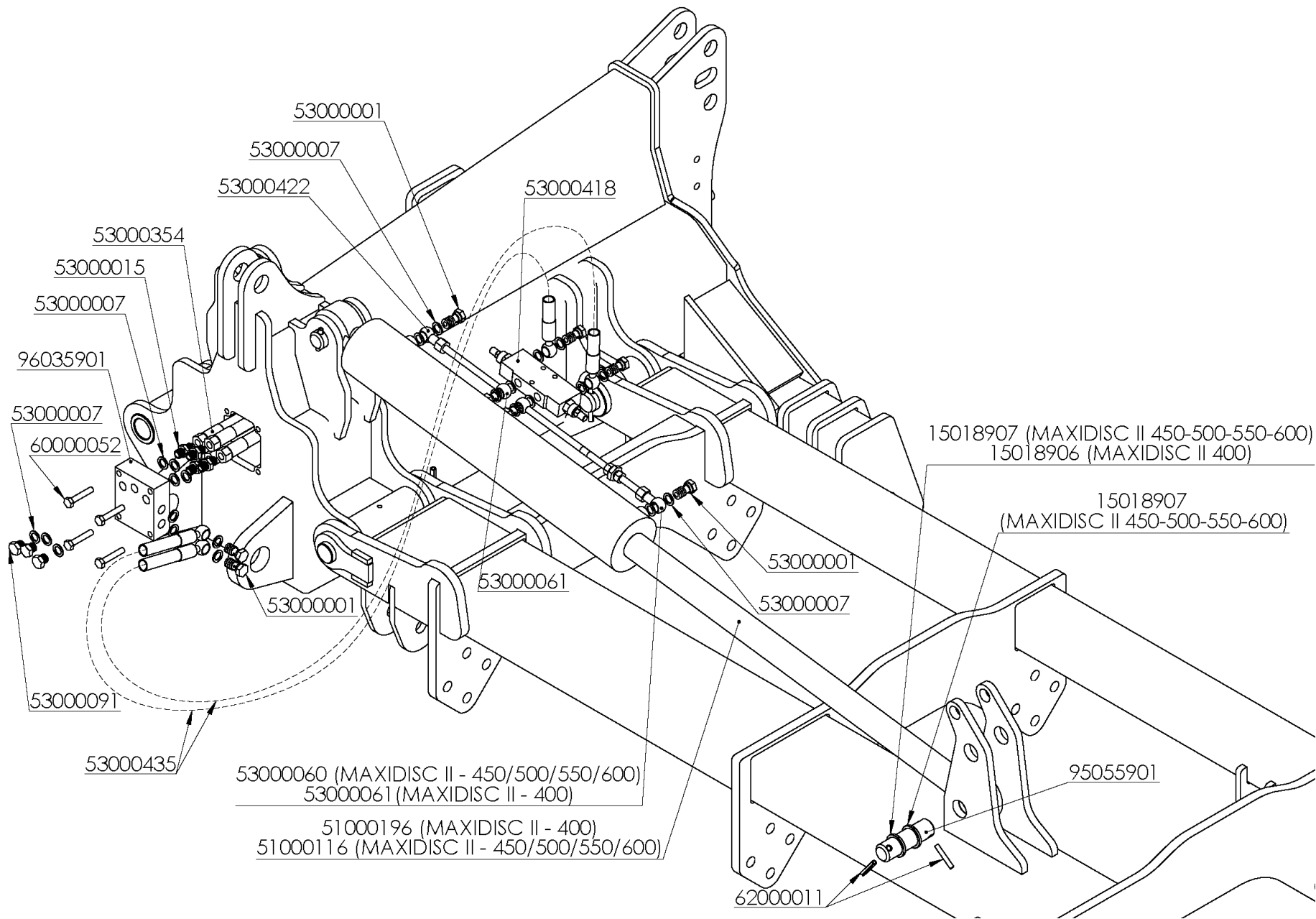


FOLDING HYDRAULIC SYSTEM

REFERENCIA	DESCRIPCIÓN
53000006	JUNTA METAL/GOMA 1/2" 11603
53000021	PROTECTOR E.R.MACHO 1/2" ROJO 5029-4PR
53000051	REDUCTOR 1/2-3/8 4171
53000136	LATIG.R2-3/8*1400mm.MF-1/2/TL-3/8
53000351	PASATABIQUES 3/8 C/TUERCA
53000370	SOPORTE LATIG.TORRETA 1 HUECO ZINC.
53000354	LATIG.R2-1/4*1400mm.TL/TL-3/8
55000003	ADAPTADOR E.R.FASTER 1/2" 30410108
60000121	TORN.EXAG.DIN-933 10* 20 8.8 ZINC.
60000140	TUER.AUTO.DIN-980 10 8.8 ZINC.
60000339	TORN.EXAG.DIN-933 10* 30 8.8 ZINC.
96035902	SOP.TOMAS HIDRAULICAS ANTERIOR MAXIDISC



FOLDING HYDRAULIC SYSTEM

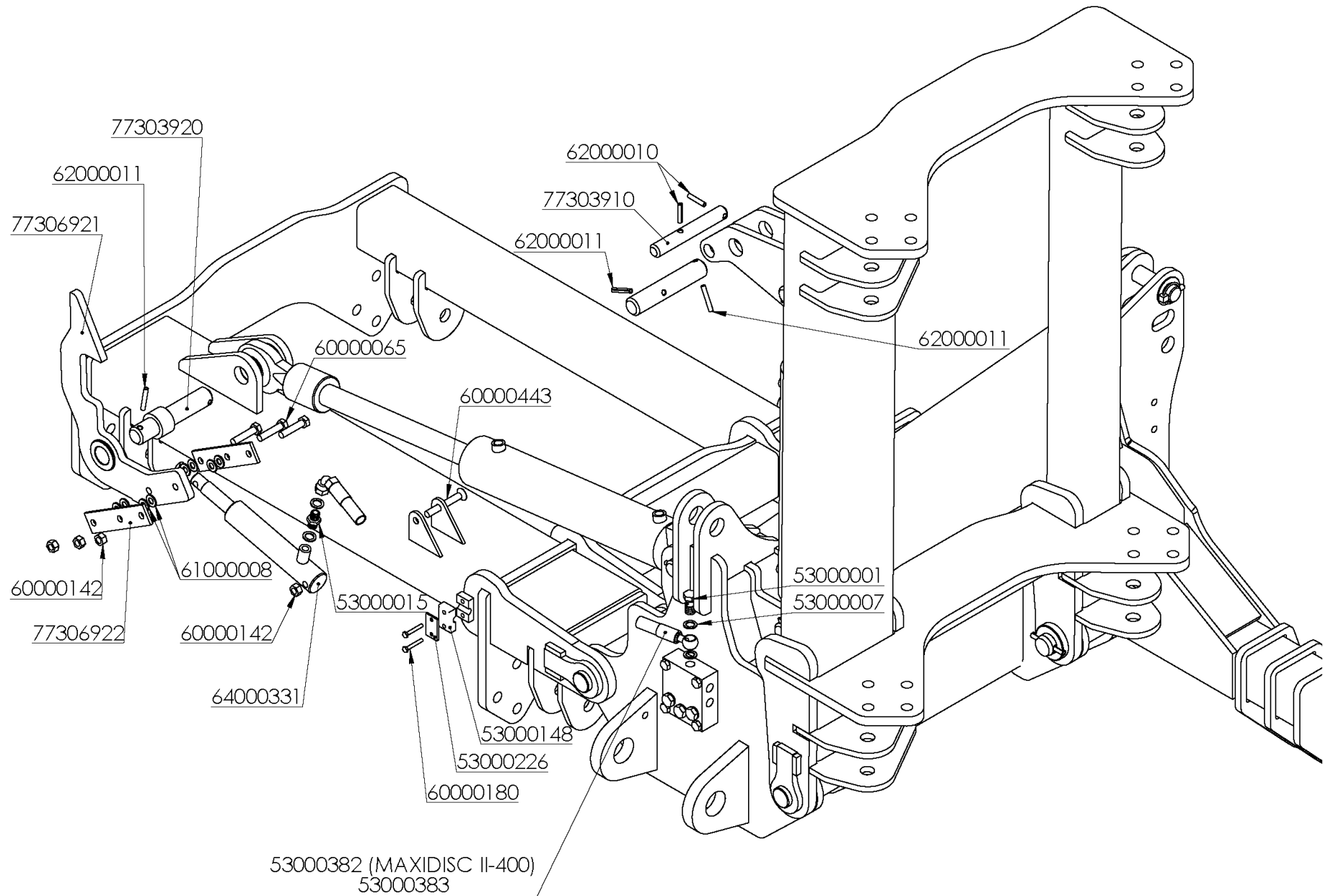


FOLDING HYDRAULIC SYSTEM

REFERENCIA	DESCRIPCIÓN
15018907	CASQ.D=45/35*5 SEP.PLEGADOS.CICRO
51000116	CILIND.PLEG.MCH/DISC/FENIX 50/100/500
51000196	CILIND.PLEG.CHISEL/VBC/EURO/MAXIDISC 90/45/375
53000001	TORNILLO SIMPLE 3/8 4022
53000007	JUNTA METAL/GOMA 3/8" 11602
53000015	UNION MACHO 3/8 4062
53000060	ESFERICO 3/8" TUBO 12mm.L=400 4002E2
53000061	ESFERICO 3/8" TUBO 12mm.L=200
53000091	TAPON MACHO 3/8 4152
53000354	LATIG.R2-1/4*1400mm.TL/TL-3/8
53000418	VALV.OVERCENTER VBCD 3/8 DE-A V0422
53000422	ESFERICO 3/8" + UNION TUBO/TUBO 12 4002E+12L
53000435	LATIG.R2-3/8* 750mm.OR/OR-3/8
60000052	TORN.EXAG.DIN-931 10* 55 10.9 ZINC.
62000011	PASADOR ELAST.DIN-1481 8* 50 ZINC.
95055901	BULON D=34,8*122mm.CIL.BAST.TELESC.SS + GEOMET
96035901	SOP.TOMAS HIDRAULICAS POSTERIOR MAXIDISC



FOLDING LOCKING SYSTEM

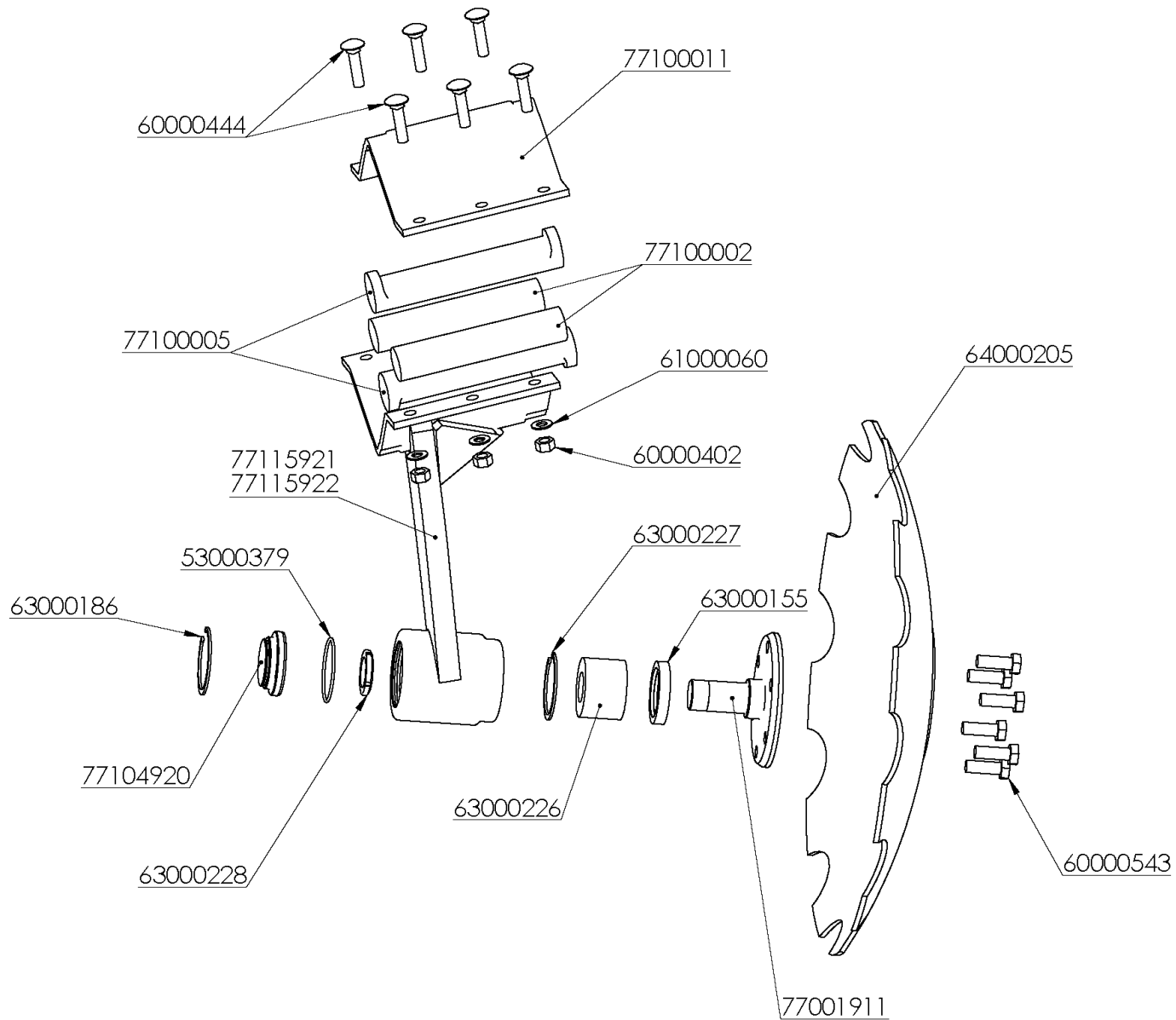


FOLDING LOCKING SYSTEM

REFERENCIA	DESCRIPCIÓN
53000001	TORNILLO SIMPLE 3/8 4022
53000007	JUNTA METAL/GOMA 3/8" 11602
53000015	UNION MACHO 3/8 4062
53000148	ABRAZ.SIMPLE D=18mm. 218PP
53000226	PLACA RFZO.AB.SIMPLE 15 DP2 - PASA A 53000201
53000382	LATIG.R2-1/4*800mm.OR/CTL-3/8
53000383	LATIG.R2-1/4*1300mm.OR/CTL-3/8
60000065	TORN.EXAG.DIN-931 12* 55 10.9 ZINC.
60000142	TUER.AUTO.DIN-980 12 8.8 ZINC.
60000180	TORN.EXAG.DIN-931 6* 40 8.8 ZINC.
60000443	TORN.ALLEN DIN-7991 12* 80 10.9 ZINC.
61000008	ARAND.DIN-125 12 ZINC.
62000010	PASADOR ELAST.DIN-1481 8* 40 ZINC.
62000011	PASADOR ELAST.DIN-1481 8* 50 ZINC.
64000331	CILIND.FRENO 25/50/100
77303910	BULON D=25,5*180mm.TRANQUE MAXIDISC
77303920	BULON D=50/34,8*185mm.TRANQUE MAXIDISC
77306921	CONJ.GANCHO TRANQUE BAST.MAXIDISC (D/12)
77306922	LLANTA GANCHO TRANQUE BAST.MAXIDISC (D/12)



24" BODY ASSEMBLY MAXIDISC II

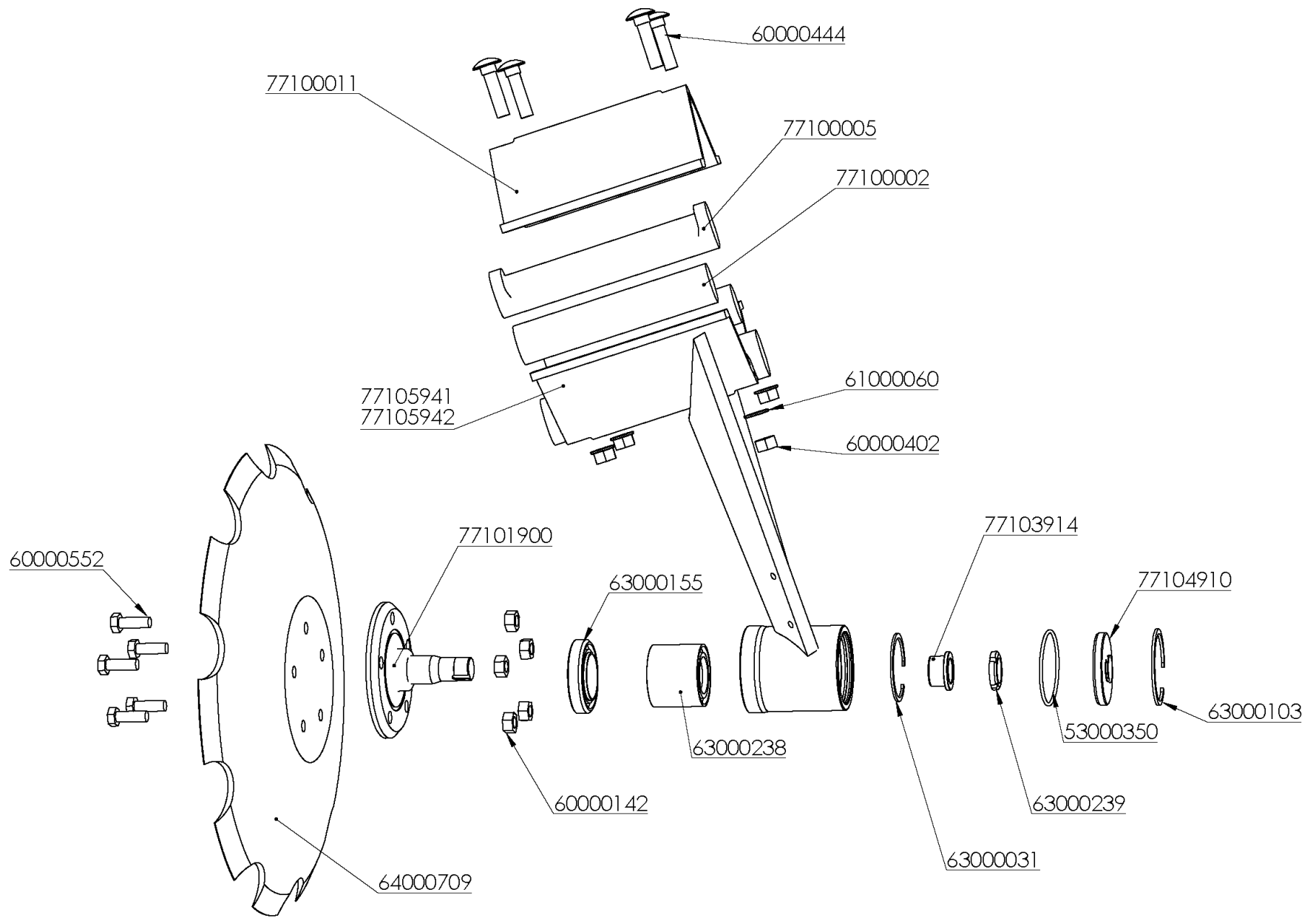


24" BODY ASSEMBLY MAXIDISC II

REFERENCIA	DESCRIPCIÓN
53000379	JUNTA TORICA 72.62-3.53
60000402	TUER.EXAG.DIN-934 12 10.9 ZINC.
60000444	TORN.ARADO DIN-603/934 12*50 10.9 ZINC.
60000543	TORN.EXAG.DIN-933 14* 20 8.8 ZINC.
61000060	ARAND.DIN-125 300HV 12 ZINC.
63000155	RETEN AP6 45*75*12,5
63000186	ANILLO ELASTICO DIN-472 75
63000226	CARTUCHO GRADA FC40772S03
63000227	ANILLO ELASTICO DIN-472-I 68
63000228	TUERCA FIJACION KMA 7
64000205	DISCO CONCAVO MUESC.EURODISC 1961-24" 6mm.MR-61
77001911	CONJ.EJE DISCO EURODISC (D/20)
77100002	SUSPENSION ELASTICA D=40*200mm.
77100005	SUSPENSION ELASTICA D=40*226mm.C/RESALTE
77100011	LLANTA AMARRE MINIDISC
77104920	TAPA BUJE DISCOS EURO/MAXIDISC (D/11)
77115921	CONJ.BRAZO ANTERIOR MAXIDISC-II (D/20) (IZQUIERDO)
77115922	CONJ.BRAZO POSTERIOR MAXIDISC-II (D/20) (DERECHO)



20" BODY ASSEMBLY MAXIDISC II

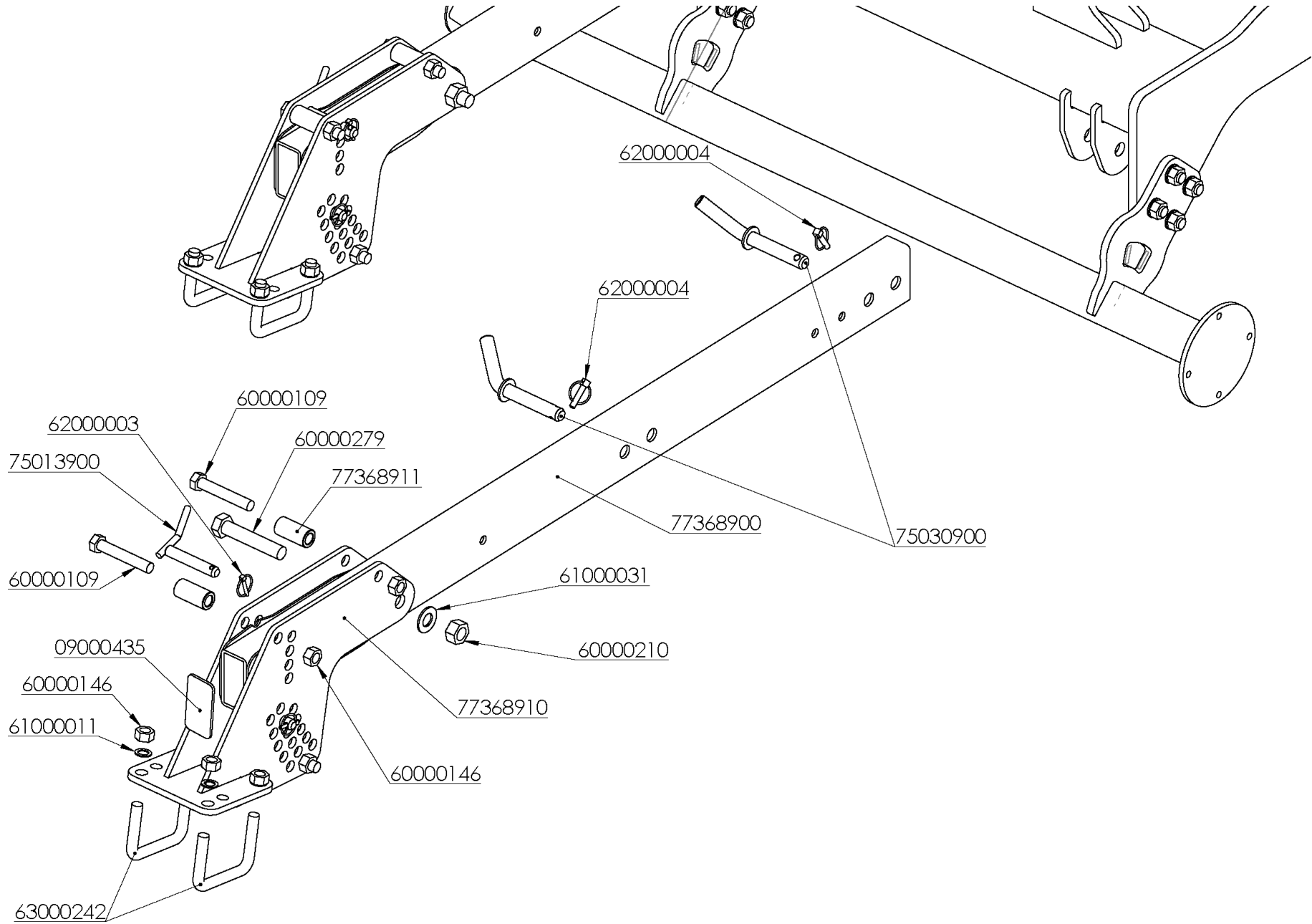


20" BODY ASSEMBLY MAXIDISC II

REFERENCIA	DESCRIPCIÓN	REFERENCIA	DESCRIPCIÓN
53000350	JUNTA TORICA 69.44-3.53	63000239	TUERCA FIJACION KMA 5
60000142	TUER.AUTO.DIN-980 12 8.8 ZINC.	64000709	DISCO CONCAVO MUESCADO GRADA RAP/VIÑA 20" 6mm.
60000402	TUER.EXAG.DIN-934 12 10.9 ZINC.	77100002	SUSPENSION ELASTICA D=40*200mm.
60000444	TORN.ARADO DIN-603/934 12*50 10.9 ZINC.	77100005	SUSPENSION ELASTICA D=40*226mm.C/RESALTE
60000552	TORN.EXAG.DIN-933 12* 20 8.8 ZINC.	77100011	LLANTA AMARRE MINIDISC
61000060	ARAND.DIN-125 300HV 12 ZINC.	77101900	CONJ.EJE DISCO MINIDISC
63000031	ANILLO ELASTICO DIN-472 62	77103914	CASQUILLO TUERCA CONJ.MINIDISC (D/16)
63000103	ANILLO ELASTICO DIN-472 72	77104910	TAPA BUJE DISCOS MINIDISC (D/07)
63000155	RETEN AP6 45*75*12,5	77105941	CONJ.BRAZO ANTERIOR MINIDISC (D/16)
63000238	CARTUCHO GRADA FC41394	77105942	CONJ.BRAZO POSTERIOR MINIDISC (D/16)



ROLLER HOLDER

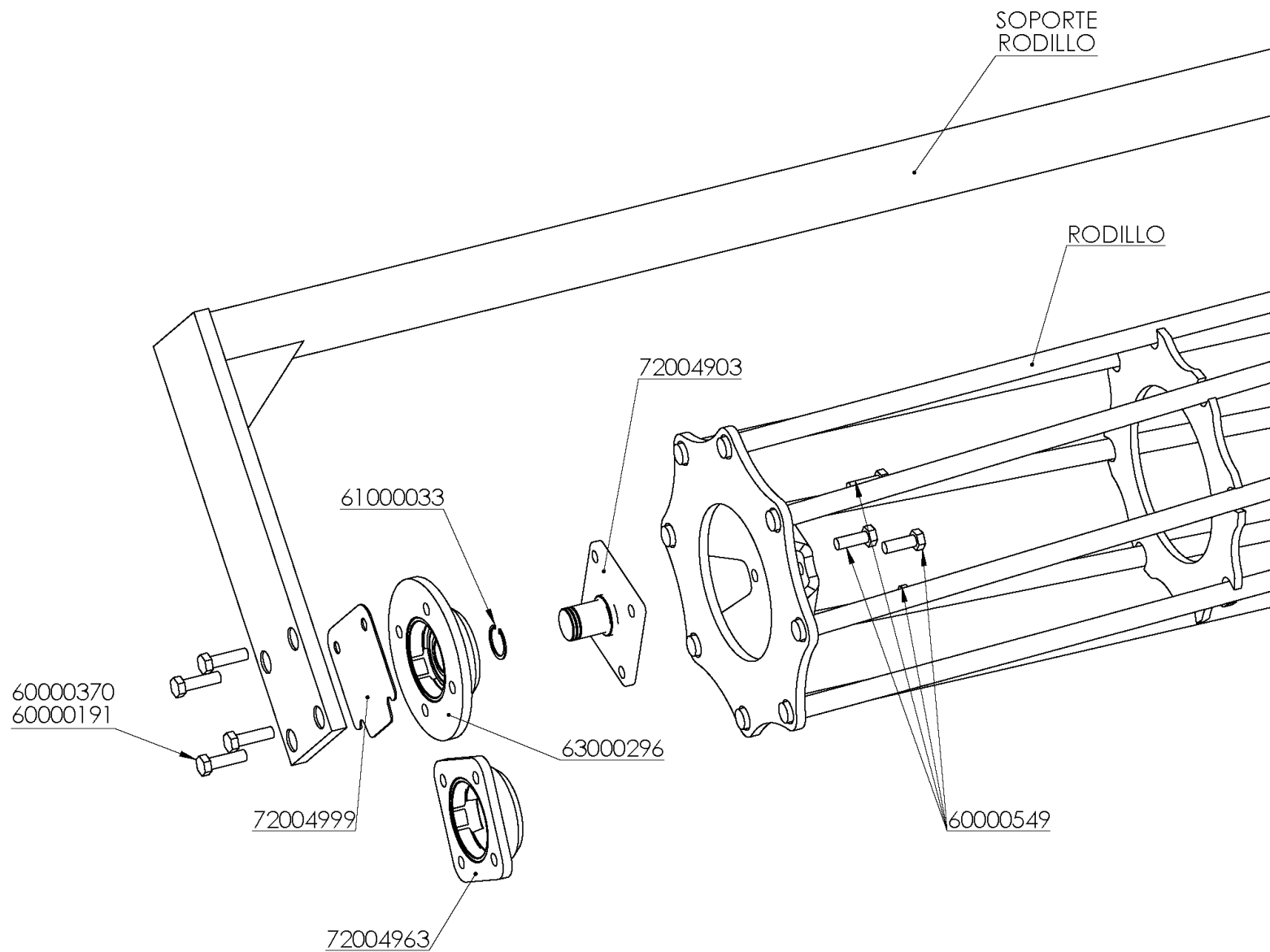


ROLLER HOLDER

REFERENCIA	DESCRIPCIÓN
9000435	TAPON GOMA 120* 60* 6mm.
60000109	TORN.EXAG.DIN-931 20*120 8.8
60000146	TUER.AUTO.DIN-980 20 10.9 ZINC.
60000210	TUER.AUTO.DIN-985 1" SAE 8.8
60000279	TORN.EXAG.C/LAR.1"*135 SAE 12.9 ZINC.
61000011	ARAND.DIN-125 20 ZINC.
61000031	ARAND.STANDAR S/BISEL CL-26 ZINC.(50x27x3)
62000003	PASADOR ANILLA 6 ZINC.
62000004	PASADOR ANILLA 10 ZINC.
63000242	ABARCON RODILLO 122x98 M-20 8.8 ZINC.
75013900	BULON D=20*118mm.REG.RODILLO ZINC.
75030900	BULON D=25*255mm.RDA.C/T
77368900	BRAZO SOP.RODILLO MAXIDISC-II
77368910	SOP.REGULACION RODILLO MAXIDISC-II
77368911	CASQ.D=35/21*70mm.SEP.RODILLO MAXIDISC-II



ROLLER ASSEMBLY



ROLLER ASSEMBLY

REFERENCIA	DESCRIPCIÓN
60000549	TORN.EXAG.DIN-933 14*25 8.8
72004903	EJE RODILLO (FKL) CUADRADO
61000033	ANILLO ELASTICO DIN-471 40
72004963	RODAMIENTO C/BRIDA CUADRADO (D/18)
63000296	RODAMIENTO C/BRIDA REDONDO (D/20)
72004999	CALZO BUJE RODILLO
60000370	TORN.EXAG.DIN-933 14* 35 8.8 ZINC.
60000191	TORN.EXAG.DIN-933 14* 30 8.8 ZINC.



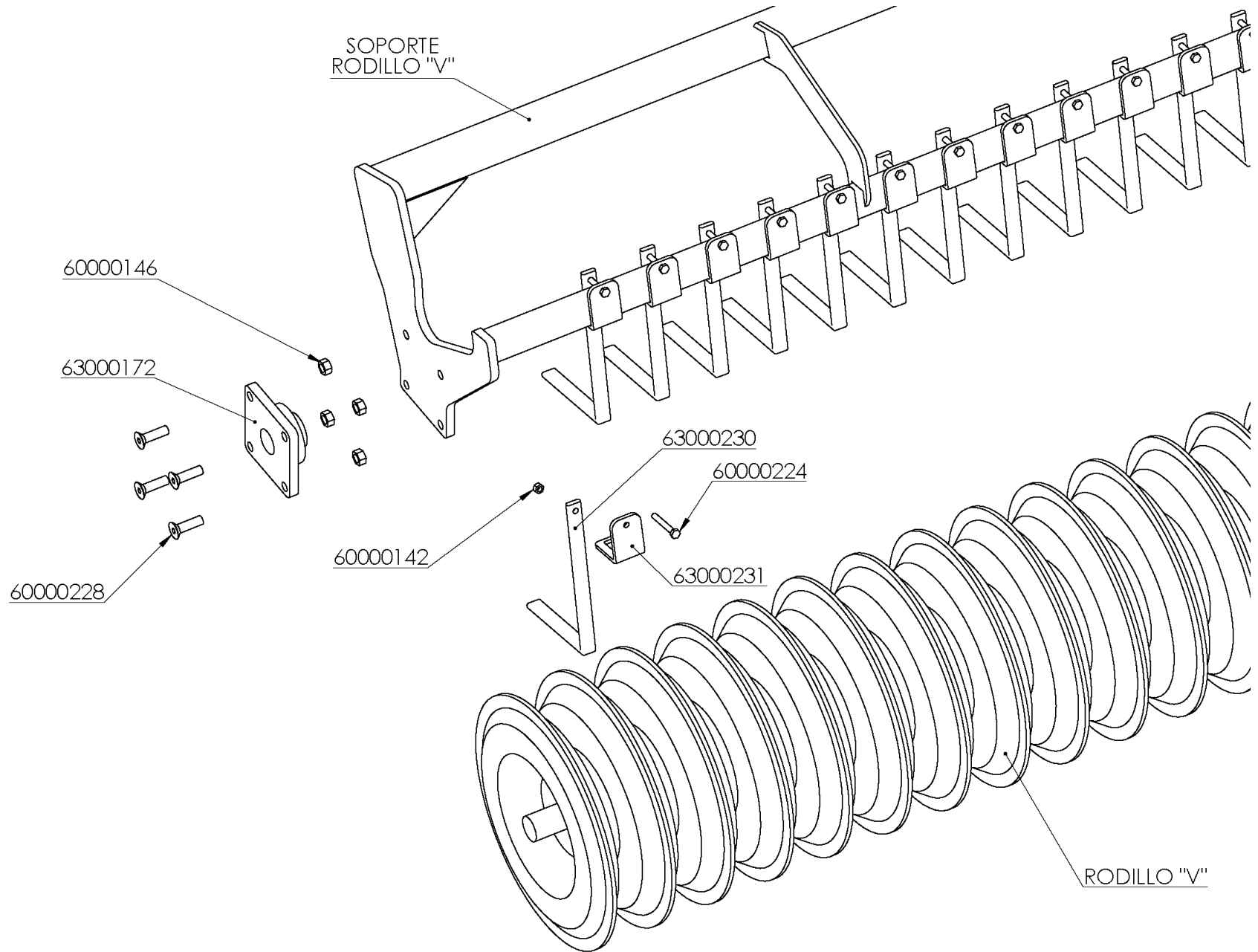
RODILLOS							
MAXIDISC II	METROS	SOPORTE RODILLOS	SOP. RODILLOS DOBLE	RODILLO 8 MUESCAS	RODILLO 8 BARRAS	RODILLO 10 MUESCAS	RODILLO 10 BARRAS
250/20	2,55	72102926	72053925	72101926	72001926	72151926	72011926
300/22	3,00	72102931	72053931	72101931	72001931	72151931	72011931
350/26	3,80	72102935	72053938	72101935	72001935	72151935	72011935



RODILLOS							
MAXIDISC II	METROS	SOPORTE RODILLOS	SOP. RODILLOS DOBLE	RODILLO 8 MUESCAS	RODILLO 8 BARRAS	RODILLO 10 MUESCAS	RODILLO 10 BARRAS
350P/26	2 x 1,95	72102919	72053919	72101919	72001919	72151919	72011919
400P/30	1,95	72102919	72053919	72101919	72001919	72151919	72011919
	+ 2,20	+ 72102920	+ 72053922	+ 72101920	+ 72001920	+ 72151920	+ 72011920
450P/34	2,55	72102926	72053925	72101926	72001926	72151926	72011926
	+ 2,20	+ 72102920	+ 72053922	+ 72101920	+ 72001920	+ 72151920	+ 72011920
500P/38	2,70	72102925	72053927	72101925	72001925	72151925	72011925
	+ 2,55	+ 72102926	+ 72053925	+ 72101926	+ 72001926	+ 72151926	+ 72011926
550P/42	2,70	72102925	72053927	72101925	72001925	72151925	72011925
	+ 3,00	+ 72102931	+ 72053931	+ 72101931	+ 72001931	+ 72151931	+ 72011931
600P/46	2 x 3,00	72102931	72053931	72101931	72001931	72151931	72011931



V ROLLER

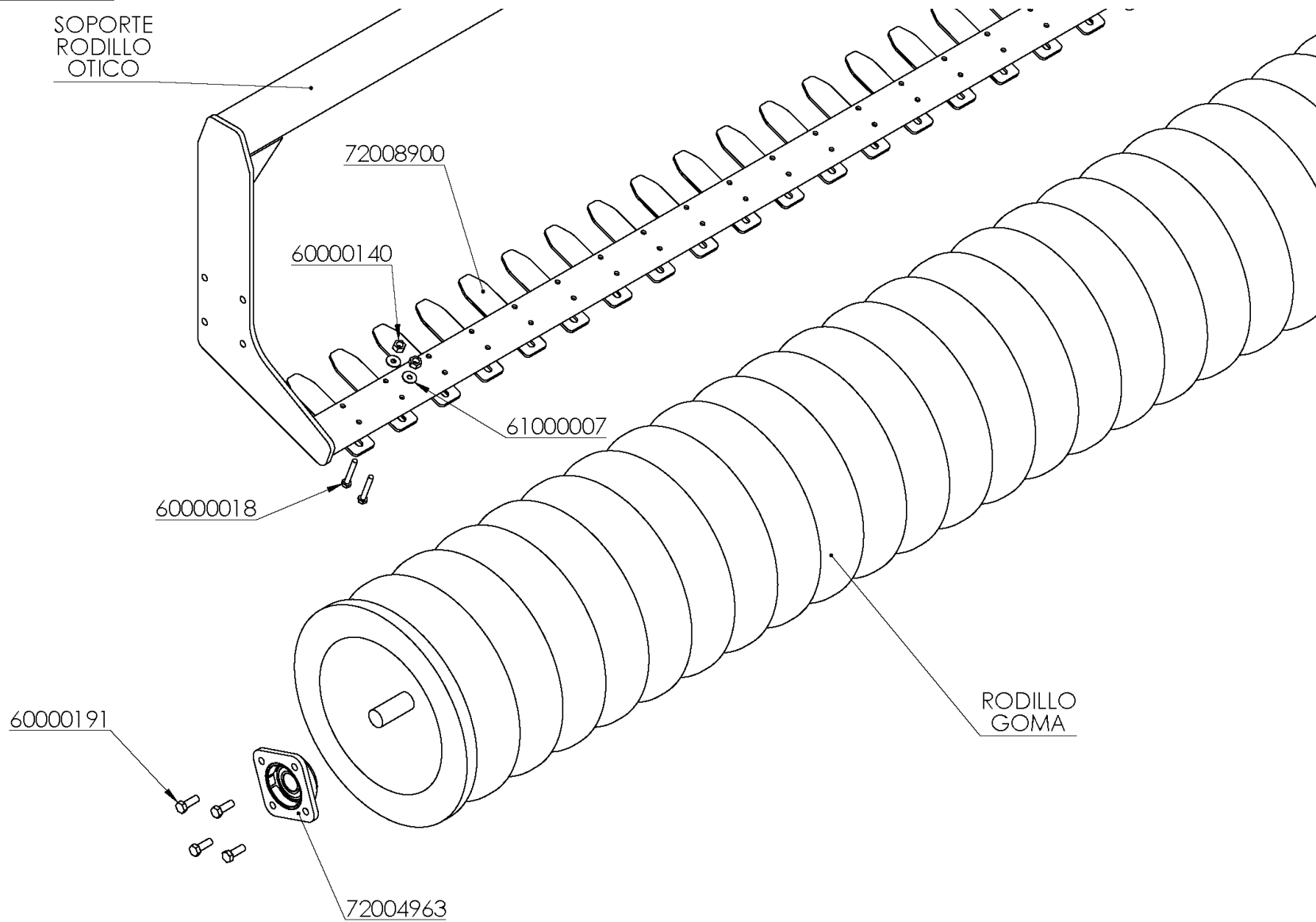


V ROLLER

REFERENCIA	DESCRIPCIÓN
60000142	TUER.AUTO.DIN-980 12 8.8 ZINC.
60000146	TUER.AUTO.DIN-980 20 10.9 ZINC.
60000224	TORN.EXAG.DIN-931 12* 90 10.9 ZINC.
60000228	TORN.ALLEN DIN-7991 20* 70 12.9
63000172	RODAM.DE BRIDA RCJY60-N REFORZADO
63000230	RASQUETA SIMPLE RODILLO "V" MOD.2013
63000231	PLACA SOP.RASQUETA RODILLO "V" MOD.2013



RUBBER ROLLER

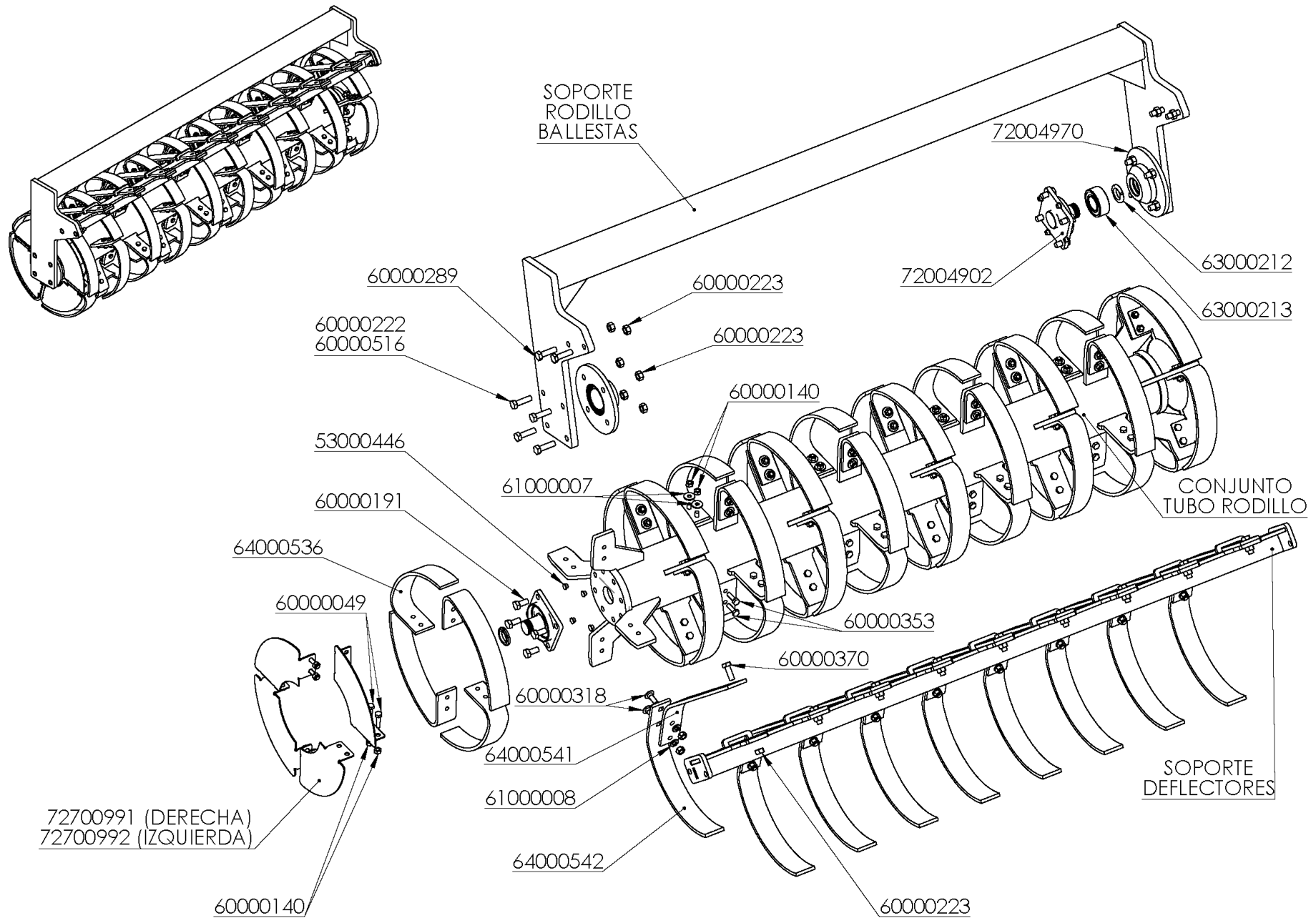


RUBBER ROLLER

REFERENCIA	DESCRIPCIÓN
60000018	TORN.EXAG.DIN-931 10* 70 8.8 ZINC.
60000140	TUER.AUTO.DIN-980 10 8.8 ZINC.
60000191	TORN.EXAG.DIN-933 14* 30 8.8 ZINC.
61000007	ARAND.DIN-9021 10 ZINC.
72004963	RODAMIENTO C/BRIDA CUADRADO (D/18)
72008900	RALLADERA RODILLO OTICO



LEAF-SPRINGS ROLLER

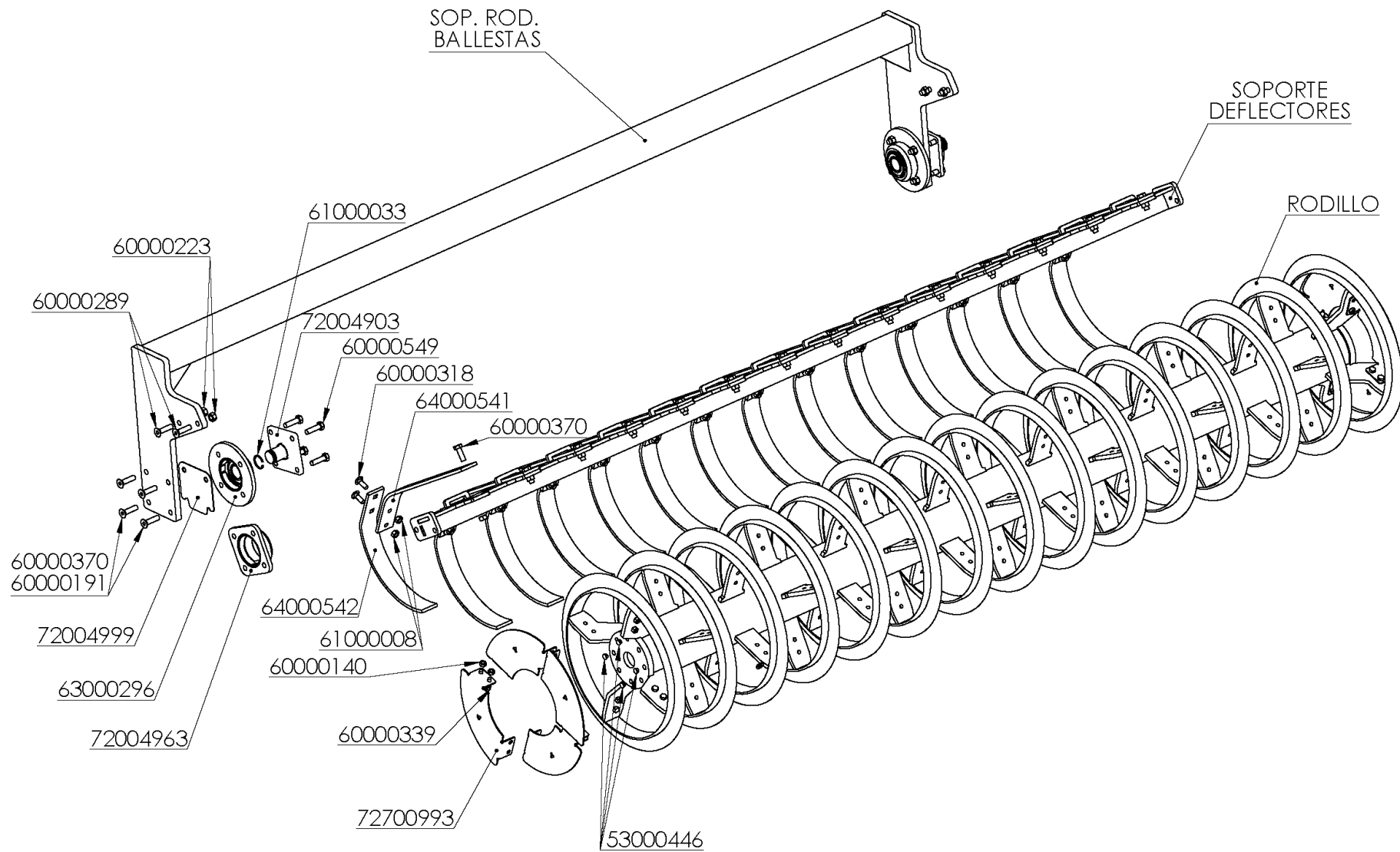


LEAF-SPRINGS ROLLER

REFERENCIA	DESCRIPCIÓN	REFERENCIA	DESCRIPCIÓN
53000446	TAPON PVC NEGRO 12,3mm.	63000213	RODAM.ENT-140225-308E BUJE RODILLO MCH
60000049	TORN.EXAG.DIN-931 10* 40 10.9 ZINC.	64000536	BALLESTA RODILLO 60*9
60000140	TUER.AUTO.DIN-980 10 8.8 ZINC.	64000541	SOP.DEFLECTOR ROD.BALLESTA 60*9
60000191	TORN.EXAG.DIN-933 14* 30 8.8 ZINC.	64000542	DEFLECTOR ROD.BALLESTA
60000222	TORN.EXAG.DIN-931/933 14* 40 8.8	72004902	EJE RODILLO CIERRE ESFERICO (OJO PEDIR RODAM.63000213)
60000223	TUER.AUTO.DIN-980 14 8.8 ZINC.	72004970	BUJE C/BRIDA RODILLO MCH (D/14)
60000289	TORN.EXAG.DIN-931 14* 40 12.9 ZINC.	72004974	CONJ.RODAMIENTO RODILLO REDONDO (BALLESTAS-"T"- "U")
60000318	TORN.ARADO DIN-603/934 12*35 8.8 ZINC.	72004999	CALZO BUJE RODILLO
60000353	TORN.EXAG.DIN-931 10* 35 10.9 ZINC.	72700920	CONJUNTO TUBO RODILLO BALLESTAS 2,00m.
60000370	TORN.EXAG.DIN-933 14* 35 8.8 ZINC.	72700991	CHAPA PLEGADA DCHA. ROD. BALL.
60000516	TORN.EXAG.DIN-933 14* 45 8.8	72700992	CHAPA PLEGADA IZQ. ROD. BALL.
61000007	ARAND.DIN-9021 10 ZINC.	72702920	SOP.DEFLECTORES RODILLO BALLESTAS 2,00m.
61000008	ARAND.DIN-125 12 ZINC.	72703920	SOP.RODILLO BALLESTAS 2,00m. (D/14)
63000212	TUERCA FIJACION KMA 8		



T RING ROLLER



T RING ROLLER

REFERENCIA	DESCRIPCIÓN
53000446	TAPON PVC NEGRO 12,3mm.
60000140	TUER.AUTO.DIN-980 10 8.8 ZINC.
60000191	TORN.EXAG.DIN-933 14* 30 8.8 ZINC.
60000223	TUER.AUTO.DIN-980 14 8.8 ZINC.
60000289	TORN.EXAG.DIN-931 14* 40 12.9 ZINC.
60000318	TORN.ARADO DIN-603/934 12*35 8.8 ZINC.
60000339	TORN.EXAG.DIN-933 10* 30 8.8 ZINC.
60000370	TORN.EXAG.DIN-933 14* 35 8.8 ZINC.
60000549	TORN.EXAG.DIN-933 14*25 8.8
61000008	ARAND.DIN-125 12 ZINC.
61000033	ANILLO ELASTICO DIN-471 40
63000296	RODAMIENTO C/BRIDA REDONDO (D/20)
64000541	SOP.DEFLECTOR ROD.BALLESTA 60*9
64000542	DEFLECTOR ROD.BALLESTA
72004903	EJE RODILLO (FKL) CUADRADO
72004963	RODAMIENTO C/BRIDA CUADRADO (D/18)
72004999	CALZO BUJE RODILLO
72700993	CHAPA PLEGADA ROD. RING



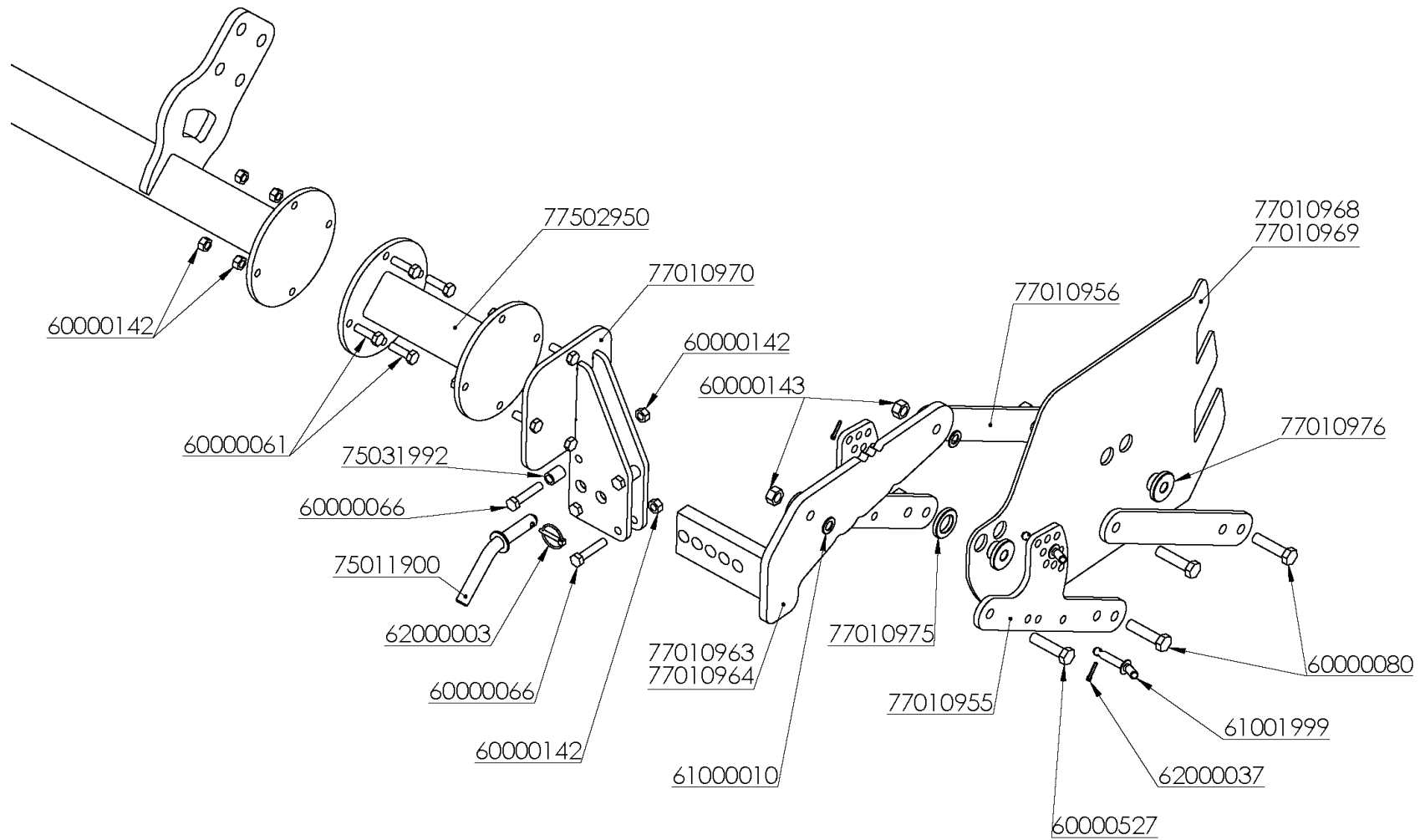
BALLESTAS						
MAXIDISC II	METROS	SOPORTE RODILLOS	SOPORTE DEFLECTORES	CONJ. TUBO RODILLO BALLESTAS	CONJ. TUBO RODILLO "T-RING"	CONJ. TUBO RODILLO "U-RING"
250/20	2,60					
300/22	3,00	72703930	72702930	72700930	72730930	72740930
350/26	3,60	72703936	72702936	72700936	72730936	72740936



BALLESTAS						
MAXIDISC II	METROS	SOPORTE RODILLOS	SOPORTE DEFLECTORES	CONJ. TUBO RODILLO BALLESTAS	CONJ. TUBO RODILLO "T-RING"	CONJ. TUBO RODILLO "U-RING"
350P/26	2 x 2,00	72703920	72702920	72700920	72730920	72740920
400P/30	2,00	72703920	72702920	72700920	72730920	72740920
	+ 2,20	+ 72703922	+ 72702922	+ 72700922	+ 72730922	+ 72740922
450P/34	2,60	72703926	72702926	72700926	72730926	
	+ 2,20	+ 72703922	+ 72702922	+ 72700922	+ 72730922	
500P/38	2,80	72703928	72702928	72700928		
	+ 2,60	+ 72703926	+ 72702926	+ 72700926		
550P/42	2,60	72703926	72702926	72700926	72730926	
	+ 3,00	+ 72703930	+ 72702930	+ 72700930	+ 72730930	
600P/46	2 x 3,00	72703930	72702930	72700930	72730930	



SKIRTS / DEFLECTORS ASSEMBLY

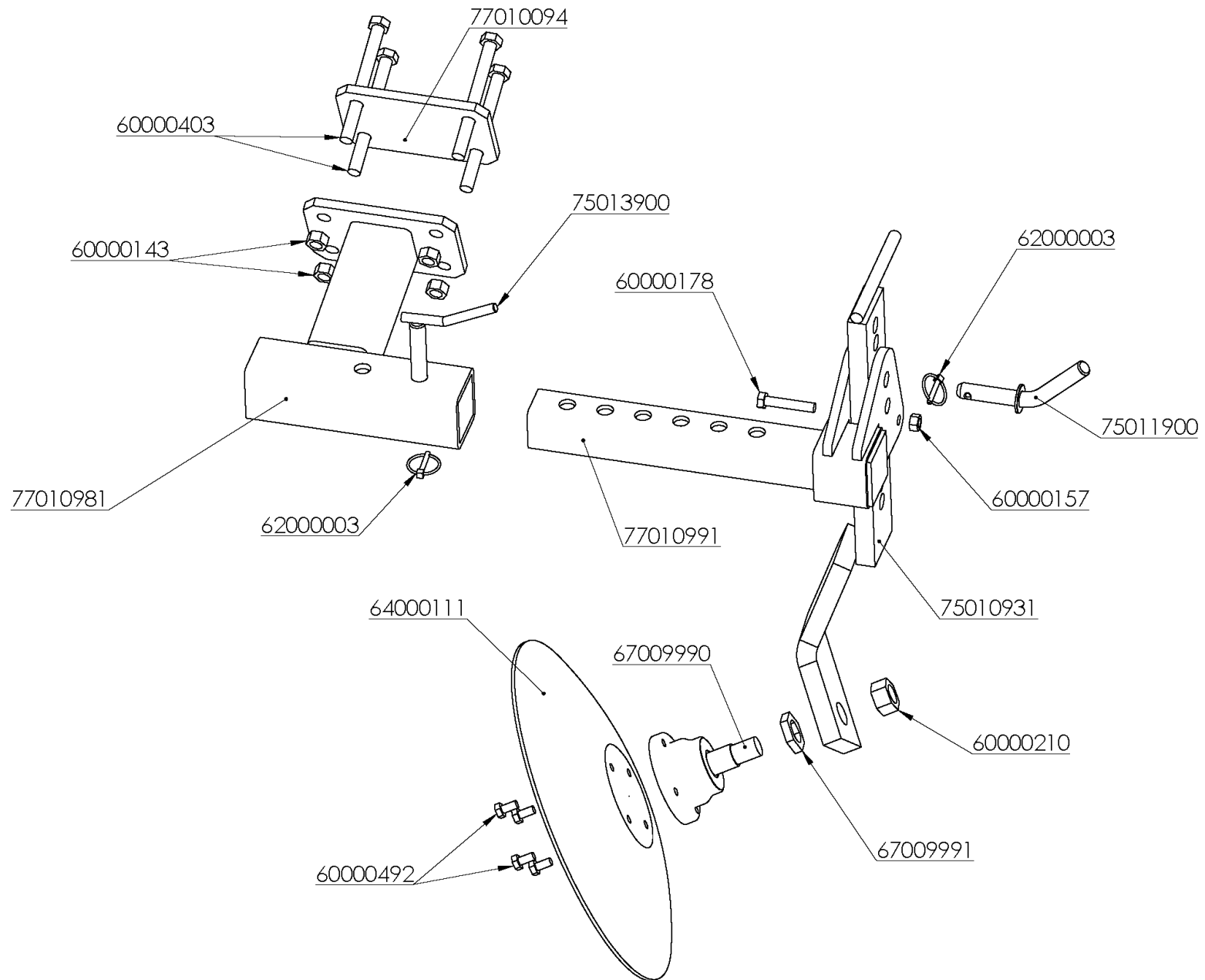


SKIRTS / DEFLECTORS ASSEMBLY

REFERENCIA	DESCRIPCIÓN	REFERENCIA	DESCRIPCIÓN
60000061	TORN.EXAG.DIN-933 12* 40 8.8 ZINC.	75031992	CASQ.D=20/13*27mm.
60000066	TORN.EXAG.DIN-931 12* 60 8.8 ZINC.	77010955	BIELA REG.FALDON MAXIDISC
60000080	TORN.EXAG.DIN-931 16* 60 8.8 ZINC.	77010956	BIELA FALDON MAXIDISC
60000142	TUER.AUTO.DIN-980 12 8.8 ZINC.	77010963	BRAZO CORTO FALDON TRAS. MAXIDISC
60000143	TUER.AUTO.DIN-980 16 8.8 ZINC.	77010964	BRAZO CORTO FALDON DEL. MAXIDISC
60000527	TORN.EXAG.DIN-931 16* 65 8.8 ZINC.	77010968	PLACA FALDON DEL. MAXIDISC
61000010	ARAND.DIN-125 16 ZINC.	77010969	PLACA FALDON TRAS. MAXIDISC
61001999	BULON D=12*120mm. REG.RASETAS	77010970	SOP.FALDON MAXIDISC
62000003	PASADOR ANILLA 6 ZINC.	77010975	ARANDELA 50*30*10mm.
62000037	PASADOR ANILLA 4,5 ZINC.	77010976	CASQ.D=50/29,5/16,5*23mm.
62000523	ANILLA PASADOR INOX-316 1,8x25	77502950	PAÑO DISCOS MODULO MINIVID
75011900	BULON D=20*200mm.REG.DISCO FENIX/VBC		



EDGE / LATERAL DISC

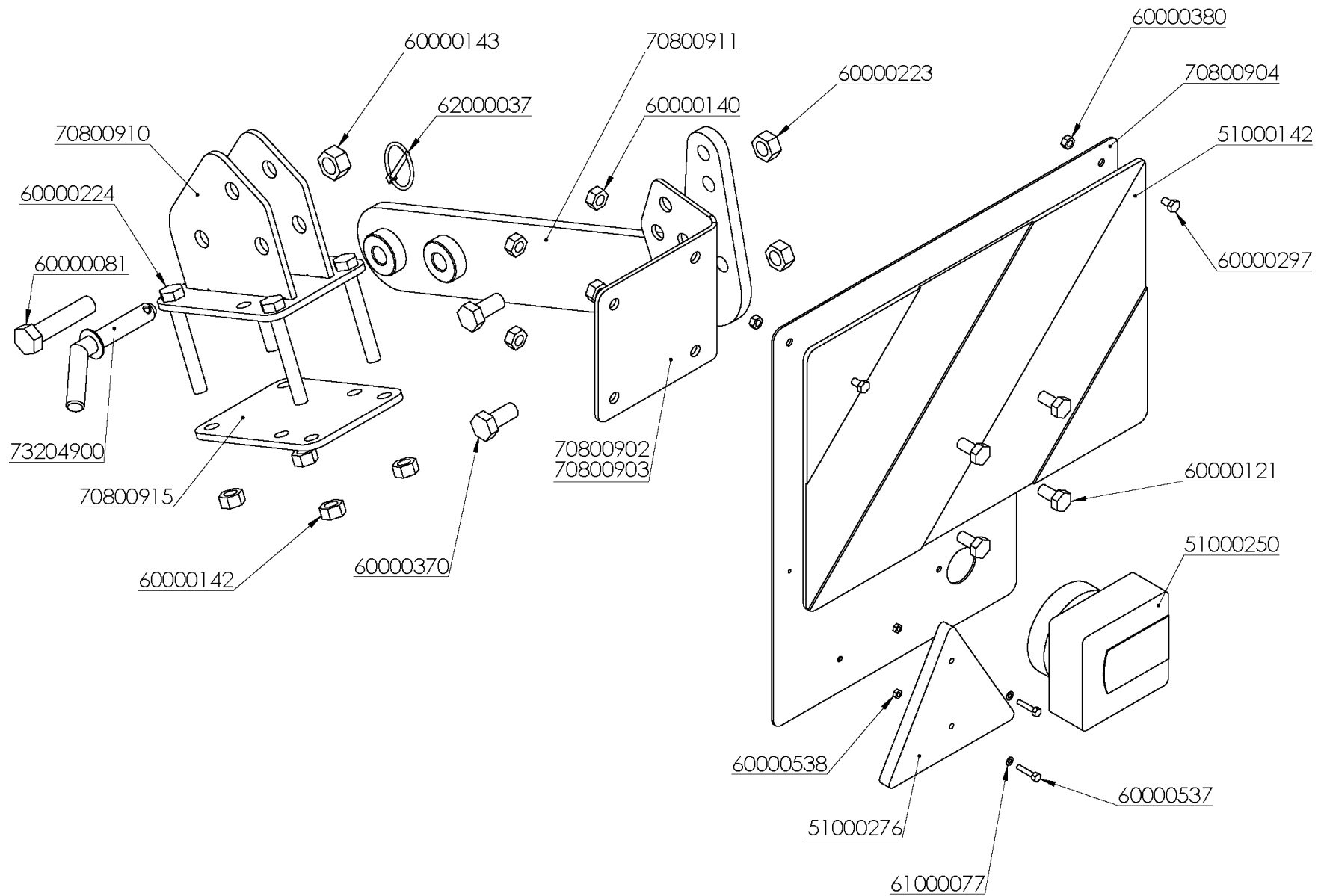


EDGE / LATERAL DISC

REFERENCIA	DESCRIPCIÓN
60000143	TUER.AUTO.DIN-980 16 8.8 ZINC.
60000157	TUER.EXAG.DIN-934 12 8.8 ZINC
60000178	TORN.EXAG.DIN-931 12* 65 8.8 ZINC.
60000210	TUER.AUTO.DIN-985 1" SAE 8.8 ZN.
60000403	TORN.EXAG.DIN-931 16*170 10.9 ZINC.
60000492	TORN.EXAG.DIN-933 10* 20 10.9 ZINC.
62000003	PASADOR ANILLA 6 ZINC.
64000111	DISCO CONCAVO LISO FENIX/VB 1960-18" 4mm.
67009990	CONJ.BUJE + EJE DISCOS 20" (D/16)
67009991	ARANDELA FRENO BUJE DISCOS
75010931	SOP.DISCOS VBC IZQD.
75011900	BULON D=20*200mm.REG.DISCO FENIX/VBC
75013900	BULON D=20*118mm.REG.RODILLO ZINC.
77010094	PLACA AMARRE DISCO CIERRE MAXIDISC-II
77010981	SOP.DISCO CIERRE REG.LAT. MAXIDISC
77010991	BRAZO DISCO CIERRE EURO/MAXIDISC



SIGNALLING KIT FIX MODEL

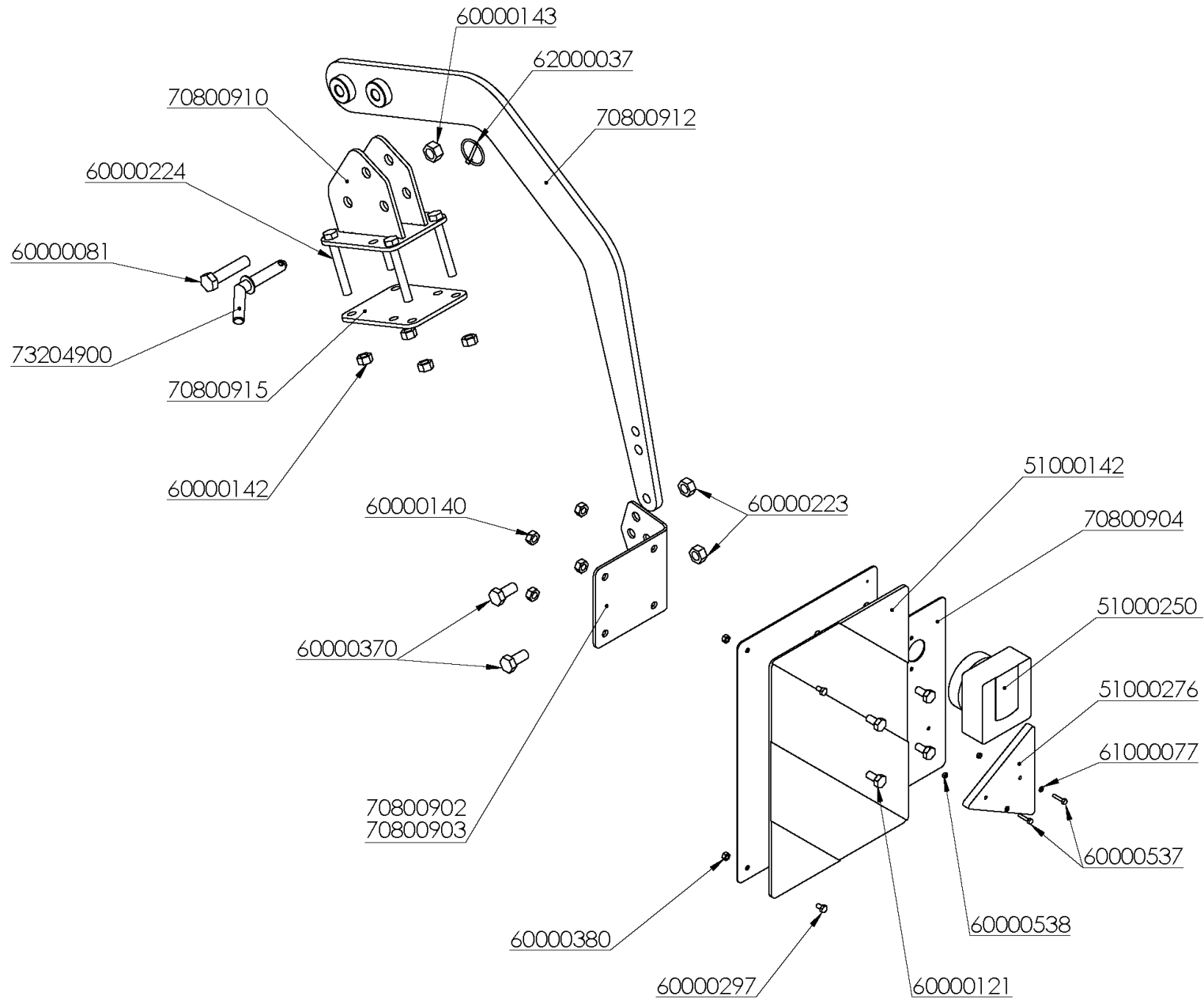


SIGNALLING KIT FIX MODEL

REFERENCIAS	DESCRIPCIÓN
51000142	PAREJA PANEL PLACA 423x282 239909
51000250	KIT LUCES MAGNETICAS LED INALAMBRICAS 1216802
51000276	TRIANGULO ROJO 04010
60000081	TORN.EXAG.DIN-931 16* 70 8.8 ZINC.
60000121	TORN.EXAG.DIN-933 10* 20 8.8 ZINC.
60000140	TUER.AUTO.DIN-980 10 8.8 ZINC.
60000142	TUER.AUTO.DIN-980 12 8.8 ZINC.
60000143	TUER.AUTO.DIN-980 16 8.8 ZINC.
60000223	TUER.AUTO.DIN-980 14 8.8 ZINC.
60000224	TORN.EXAG.DIN-931 12* 90 10.9 ZINC.
60000297	TORN.EXAG.DIN-931 6* 10 8.8 ZINC.
60000370	TORN.EXAG.DIN-933 14* 35 8.8 ZINC.
60000380	TUER.AUTO.DIN-985 6 8.8 ZINC.
60000537	TORN.EXAG.DIN-933 4* 20 8.8 ZINC.
60000538	TUER.AUTO.DIN-985 4 8.8 ZINC.
61000077	ARAND.DIN-125 4 ZINC.
62000037	PASADOR ANILLA 4,5 ZINC.
70800902	PLACA SOP.IZQDA.SEÑALIZACION MULTIPLE
70800903	PLACA SOP.DCHA.SEÑALIZACION MULTIPLE
70800904	PLACA SEÑALIZACION MULTIPLE
70800910	SOP.SEÑAL.VBC/MAXIDISC
70800911	BRAZO SEÑAL.VBC/MAXIDISC FIJA
70800915	PLACA AMARRE.SOP.SEÑAL.VBC/MAXIDISC
73204900	BULON D=16*150mm.REG.RDA.DOBLE



SIGNALLING KIT FOLDABLE MODEL

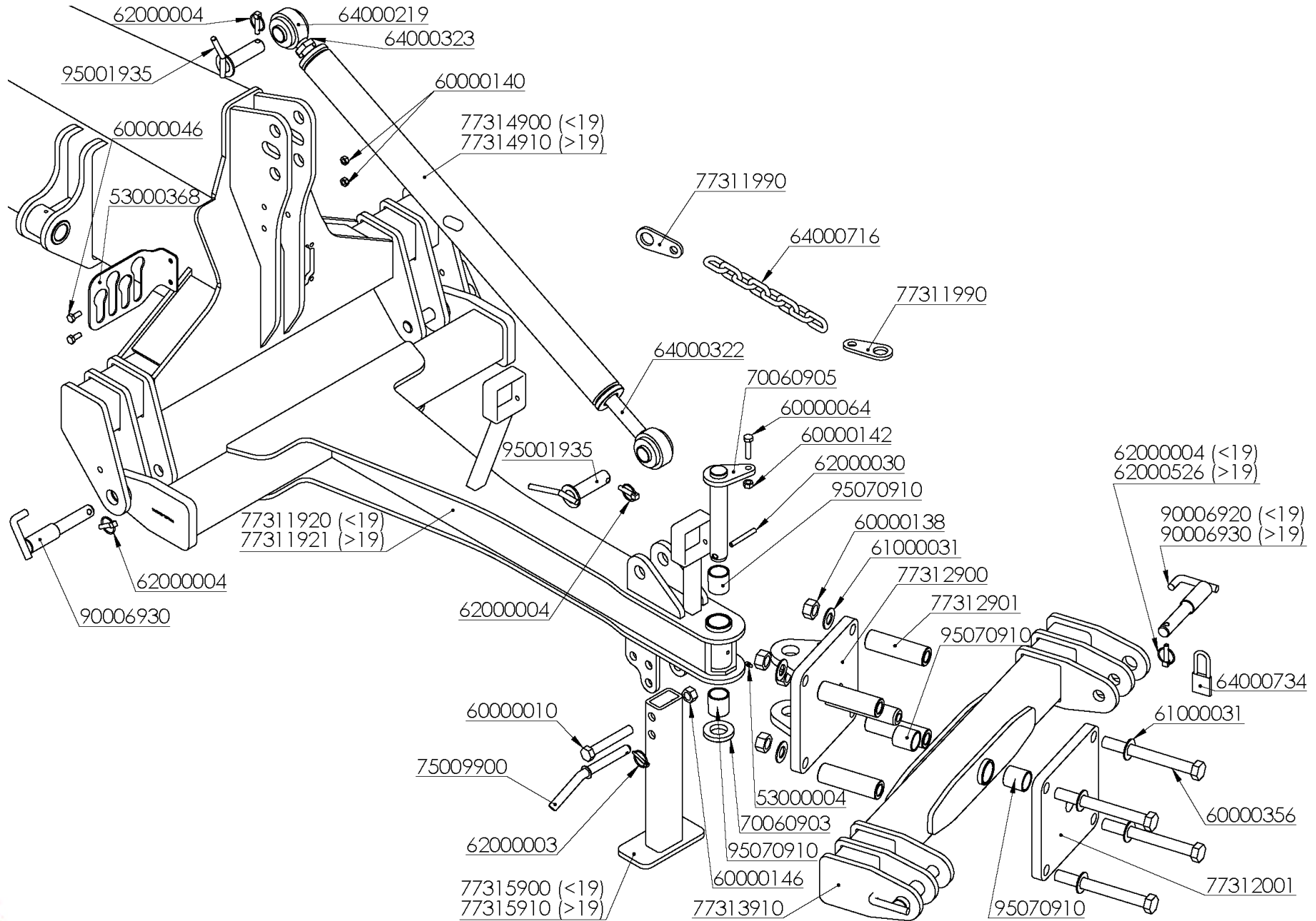


SIGNALLING KIT FOLDABLE MODEL

REFERENCIAS	DESCRIPCIÓN
51000142	PAREJA PANEL PLACA 423x282 239909
51000250	KIT LUCES MAGNETICAS LED INALAMBRICAS 1216802
51000276	TRIANGULO ROJO 04010
60000081	TORN.EXAG.DIN-931 16* 70 8.8 ZINC.
60000121	TORN.EXAG.DIN-933 10* 20 8.8 ZINC.
60000140	TUER.AUTO.DIN-980 10 8.8 ZINC.
60000142	TUER.AUTO.DIN-980 12 8.8 ZINC.
60000143	TUER.AUTO.DIN-980 16 8.8 ZINC.
60000223	TUER.AUTO.DIN-980 14 8.8 ZINC.
60000224	TORN.EXAG.DIN-931 12* 90 10.9 ZINC.
60000297	TORN.EXAG.DIN-931 6* 10 8.8 ZINC.
60000370	TORN.EXAG.DIN-933 14* 35 8.8 ZINC.
60000380	TUER.AUTO.DIN-985 6 8.8 ZINC.
60000537	TORN.EXAG.DIN-933 4* 20 8.8 ZINC.
60000538	TUER.AUTO.DIN-985 4 8.8 ZINC.
61000077	ARAND.DIN-125 4 ZINC.
62000037	PASADOR ANILLA 4,5 ZINC.
70800902	PLACA SOP.IZQDA.SEÑALIZACION MULTIPLE
70800903	PLACA SOP.DCHA.SEÑALIZACION MULTIPLE
70800904	PLACA SEÑALIZACION MULTIPLE
70800910	SOP.SEÑAL.VBC/MAXIDISC
70800912	BRAZO SEÑAL.VBC/MAXIDISC PLEG.
70800915	PLACA AMARRE.SOP.SEÑAL.VBC/MAXIDISC
73204900	BULON D=16*150mm.REG.RDA.DOBLE



FRONT TOWING KIT

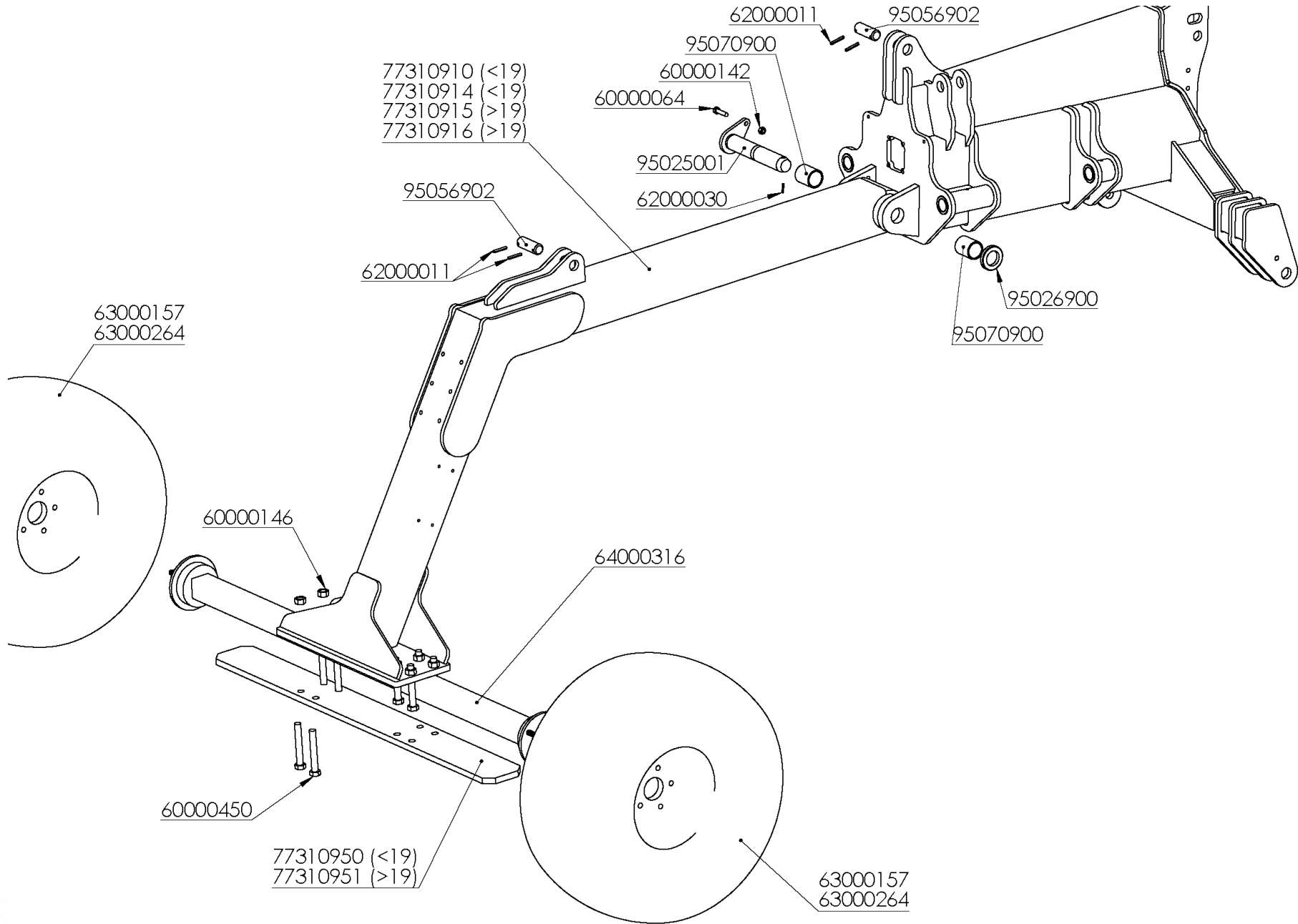


FRONT TOWING KIT

REFERENCIA	DESCRIPCIÓN	REFERENCIA	DESCRIPCIÓN
53000004	ENGRASADOR AC° DIN-71412 8*125	70060903	ARAND.P/BULON PLEG.CH/MCH/DISC
53000368	SOPORTE LATIG.TORRETA 4 HUECOS ZINC.	70060905	BULON D=40*244mm.ARRASTRE MAXIDISC
60000010	TORN.ALLEN DIN-7991 14* 40 10.9 ZINC.	75009900	BULON D=20*255mm.REG.RDA.CH ZINC.
60000046	TORN.EXAG.DIN-933 10* 25 8.8 ZINC.	77311920	LANZA TIRO MAXIDISC (D/11)
60000064	TORN.EXAG.DIN-931 12* 50 10.9 ZINC.	77311921	LANZA TIRO MAXIDISC (D/19)
60000138	TUER.AUTO.DIN-980 1"SAE 10.9 ZINC.	77311990	PLACA CADENA KIT ARRASTRE
60000140	TUER.AUTO.DIN-980 10 8.8 ZINC.	77311990	PLACA CADENA KIT ARRASTRE
60000142	TUER.AUTO.DIN-980 12 8.8 ZINC.	77312001	PLACA ROTULA MAXIDISC
60000146	TUER.AUTO.DIN-980 20 10.9 ZINC.	77312900	ROTULA MAXIDISC
60000356	TORN.EXAG.C/LAR.1"*240 SAE 12.9	77312901	CASQ.D=45/26*150mm.ROTULA MAXIDISC
61000031	ARAND.STANDAR S/BISEL CL-26 ZINC.(50x27x3)	77313900	BALANC.MAXIDISC
62000003	PASADOR ANILLA 6 ZINC.	77314900	CUERPO TENSOR MAXIDISC
62000004	PASADOR ANILLA 10 ZINC.	77314910	CUERPO TENSOR MAXIDISC (D/19)
62000030	PASADOR ELAST.DIN-1481 10* 80 ZINC.	77315900	PEON MAXIDISC
62000526	PASADOR ANILLA LATERAL 16 ZINC.	77315910	PEON MAXIDISC C/TRIPUNTAL
64000219	BRAZO IZQD.C/ROT.32mm 30354	90006920	BULON D=36/28*205mm.ENG.MAXIDISC/VBC/MCH-PV
64000322	BRAZO DCH.C/ROT.32mm 30353	90006930	BULON D=40/36*145mm.ENGANCHE MAXI/EURO/VBC CAT-III
64000323	CONTRATUERCA M-39	95001935	BULON D=31,2*115mm.3er.PTO.PENT.CAT.III (D/02)
64000716	CADENA SEGURIDAD KIT ARRASTRE	95070910	CASQ.D= 48/40*50mm.CEM.ARTIC.KIT ARRASTRE
64000734	CANDADO SEGURIDAD LATON IFAM K-40 AL PARA SS		



REAR TOWING KIT

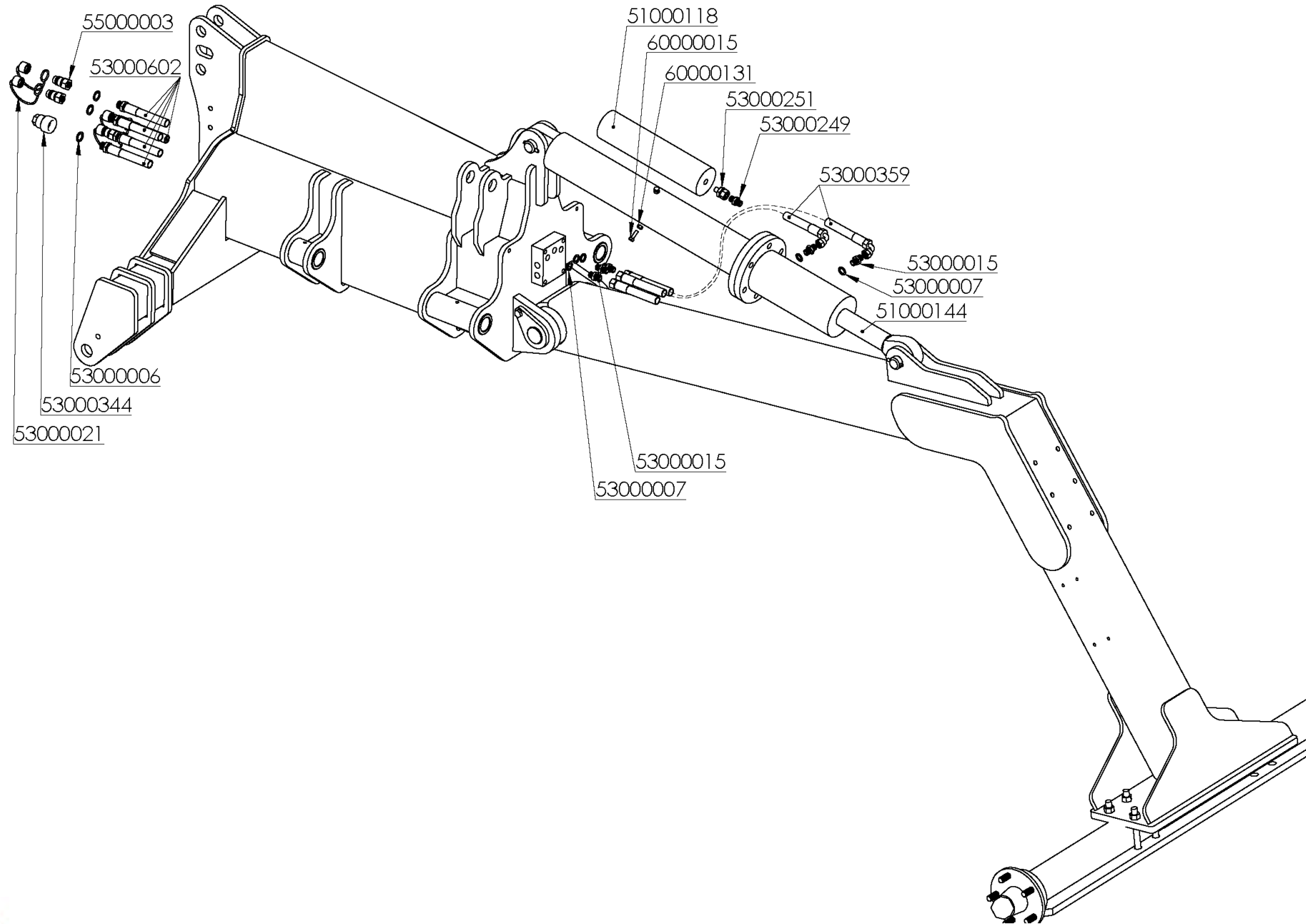


REAR TOWING KIT

REFERENCIA	DESCRIPCIÓN
60000064	TORN.EXAG.DIN-931 12* 50 10.9 ZINC.
60000142	TUER.AUTO.DIN-980 12 8.8 ZINC.
60000146	TUER.AUTO.DIN-980 20 10.9 ZINC.
60000450	TORN.EXAG.DIN-931 20*140 8.8 ZINC.
62000011	PASADOR ELAST.DIN-1481 8* 50 ZINC.
62000030	PASADOR ELAST.DIN-1481 10* 80 ZINC.
63000157	R.N.C/ATAQUE 400/60*15,5"TL-14PR FLOTATION
63000264	PAR R.N.C/ATAQUE 500/50-17"-18PR DCH+IZQ. 6 ESPARR. ARRASTR.
64000316	EJE RECTO C/F-70-65-300-60-16018-2100BL
77310910	ARBOL RDA.MAXIDISC (D/11)
77310914	ARBOL RDA.MAXIDISC P/ROD.TANDEM (D/15)
77310915	ARBOL RDA.MAXIDISC (D/19)
77310916	ARBOL RDA.MAXIDISC P/ROD.TANDEM (D/19)
77310950	PLACA INF.EJE ARBOL RDA.MAXIDISC (D/15)
77310951	PLACA INF.EJE ARBOL RDA.MAXIDISC (D/19)
95025001	BULON D=50*307mm.
95026900	ARAND.P/BULON GIRO BASTIDOR
95056902	BULON D=34,8*100mm.CILIND.VOLTEO SS + DACROMET
95070900	CASQ.D= 60/50*70mm.CEM.ARTIC.SS/GIRO BAST.



HYDRAULIC SYSTEM TOWING KIT

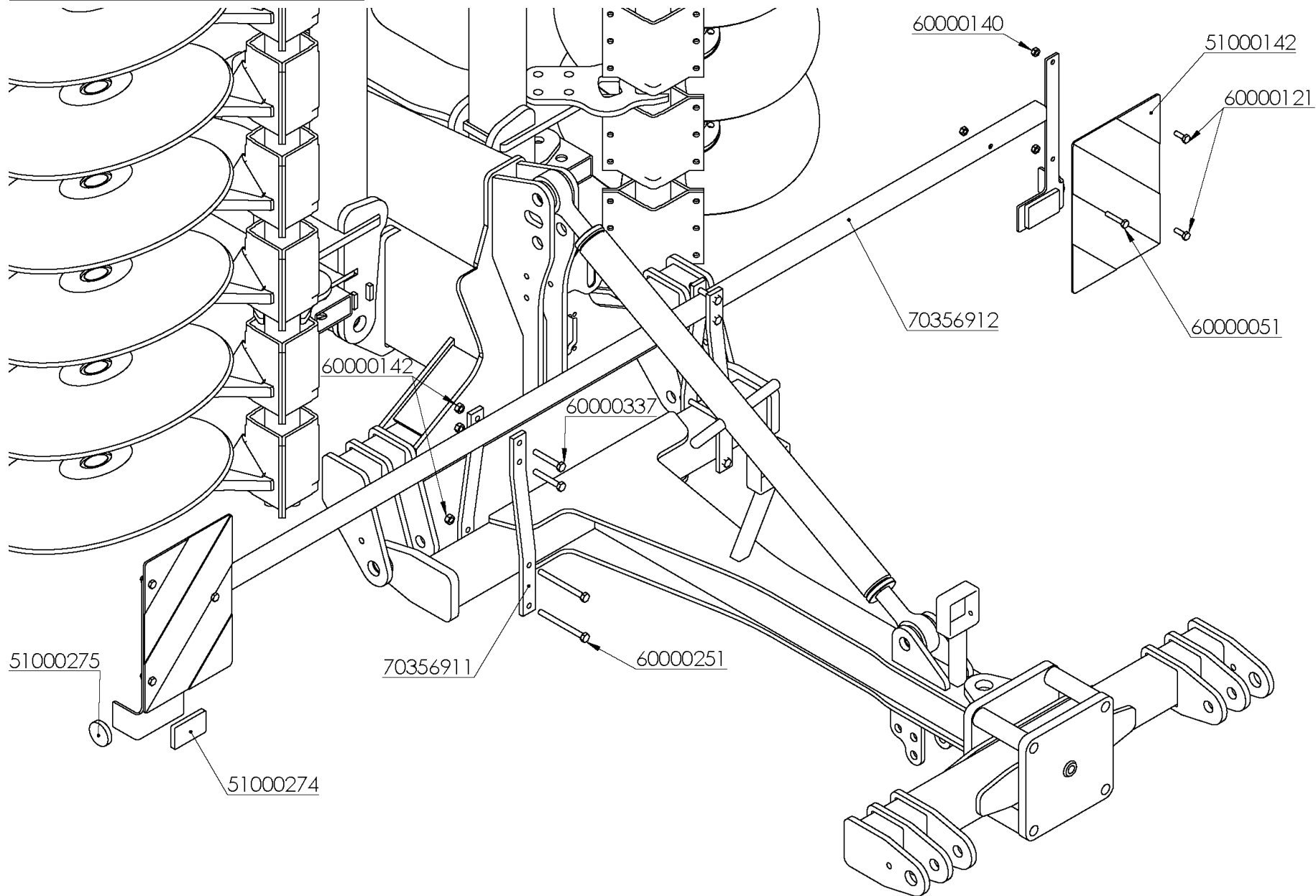


HYDRAULIC SYSTEM TOWING KIT

REFERENCIA	DESCRIPCIÓN
51000118	ACUMULADOR PISTON PO10A34N1-AC RAL-6029
51000144	CILIND.ELEV.RDAS.50/110/180 MAXIDISC
53000006	JUNTA METAL/GOMA 1/2" 11603
53000007	JUNTA METAL/GOMA 3/8" 11602
53000015	UNION MACHO 3/8 4062
53000021	PROTECTOR E.R.MACHO 1/2" ROJO 5029-4PR
53000249	UNION MACHO 1/2 4063
53000251	UNION MACHO-TL 1/2 4313
53000344	CUERPO E.R. FRENO 1/2 BSPH 3011103
53000359	LATIG.R2-3/8*1050mm.TL/CTL-3/8
53000602	LATIG.R2-3/8*3600mm.MF-1/2/TL-3/8
55000003	ADAPTADOR E.R.FASTER 1/2" 30410108
60000015	TORN.EXAG.DIN-933 8* 25 8.8 ZINC.
60000131	TUER.AUTO.DIN-980 8 8.8 ZINC.



FRONT SIGNALLING KIT

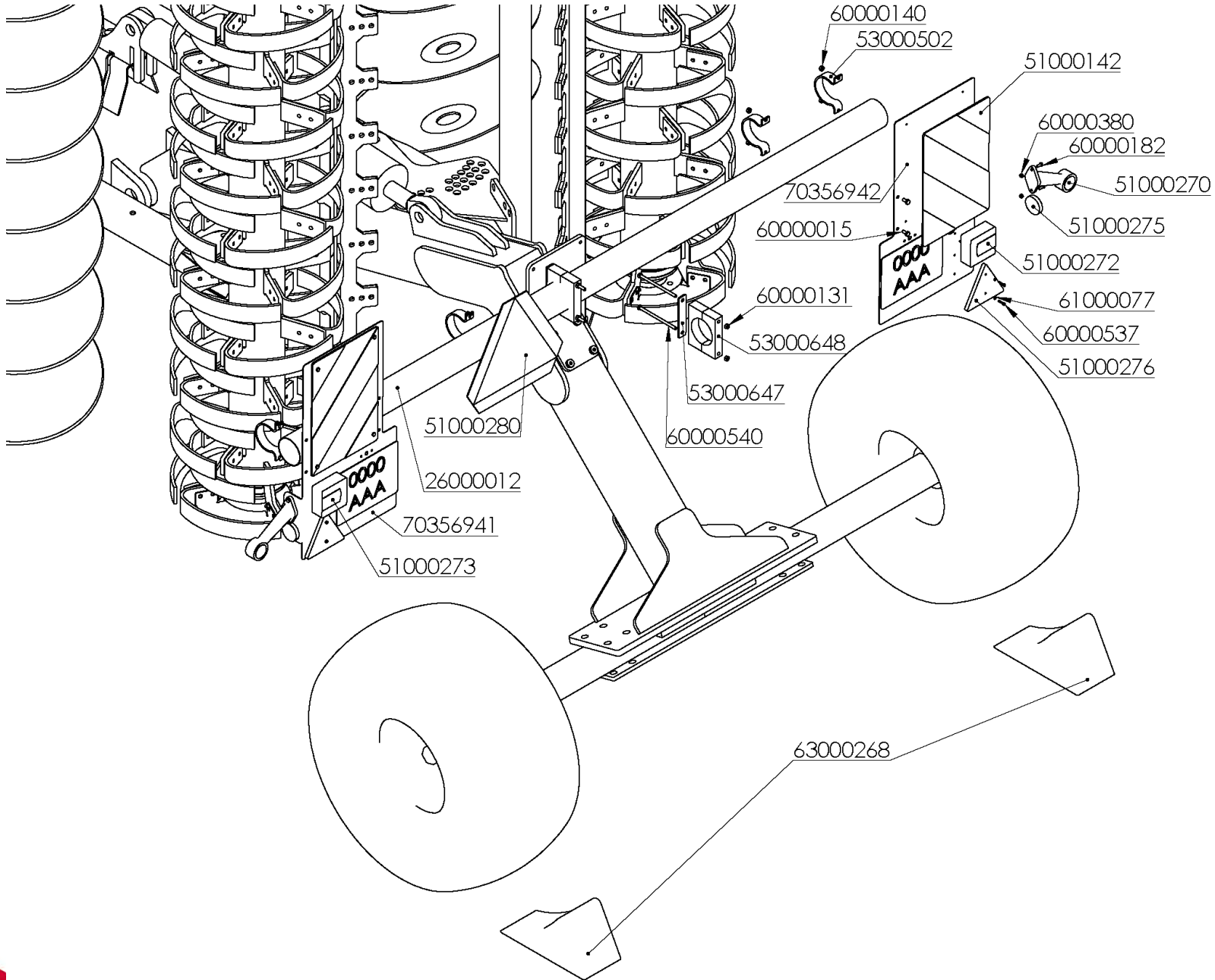


FRONT SIGNALLING KIT

REFERENCIAS	DESCRIPCIÓN
51000142	PANEL PLACA 423x282 (PAREJA) 1220128
51000274	CATADIOPTICO BLANCO 04026
51000275	CATADIOPTICO AMBAR 04007
60000051	TORN.EXAG.DIN-931 10* 50 10.9 ZINC.
60000121	TORN.EXAG.DIN-933 10* 20 8.8 ZINC.
60000140	TUER.AUTO.DIN-980 10 8.8 ZINC.
60000142	TUER.AUTO.DIN-980 12 8.8 ZINC.
60000251	TORN.EXAG.DIN-931 12*140 8.8 ZINC.
60000337	TORN.EXAG.DIN-931 12* 80 8.8 ZINC.
70356911	LLANTA SOP SEÑALIZACION FRONTAL MAXIDISC
70356912	SOP.SEÑALIZACION FRONTAL EURODISC



REAR SIGNALLING KIT

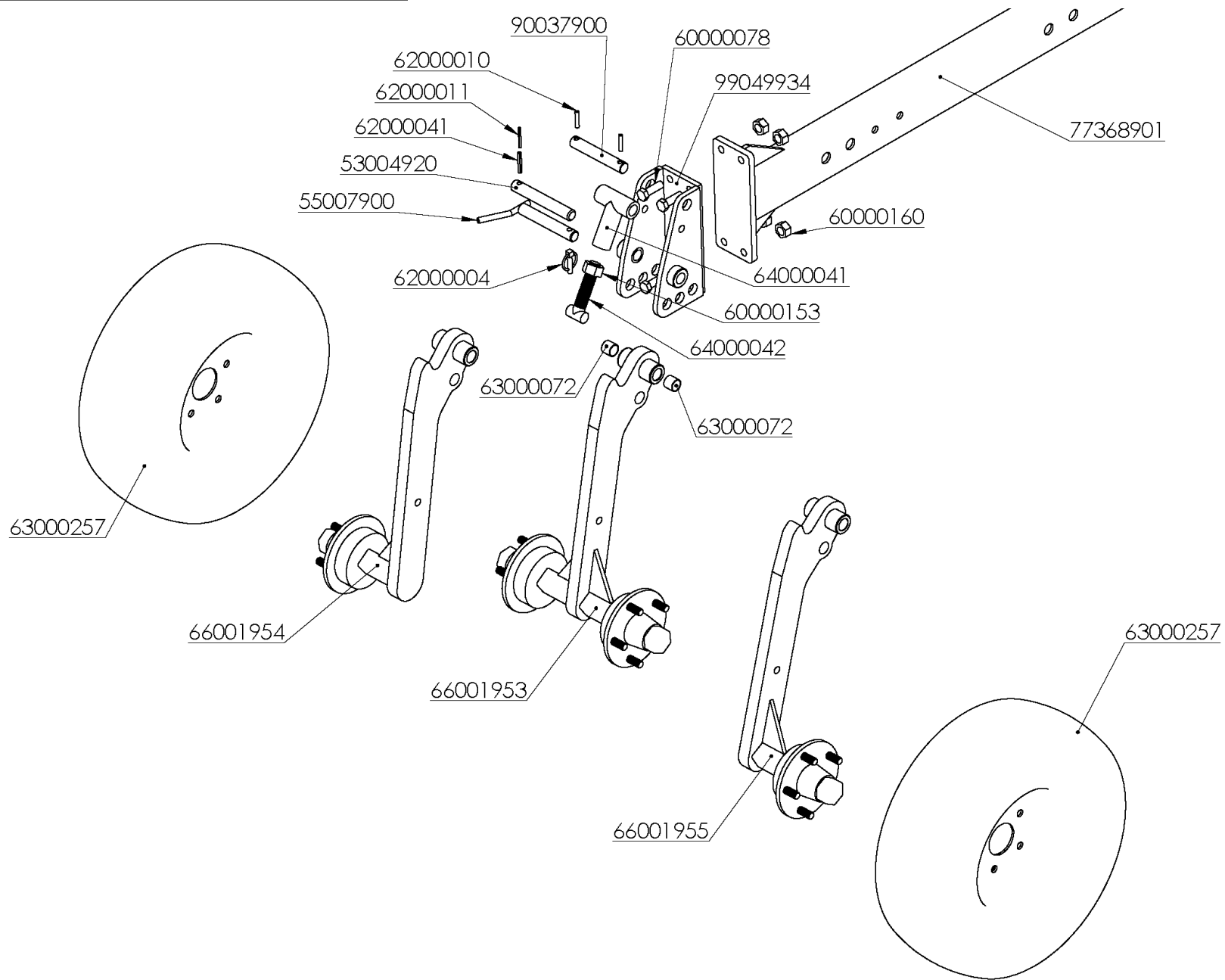


REAR SIGNALLING KIT

REFERENCIAS	DESCRIPCIÓN
26000012	M.TUBO LAMIN.FRIO GALV.D=88,9*2mm.
51000142	PANEL PLACA 423x282 (PAREJA) 1220128
51000270	CUERNO GALIBO LED LARGO 195X118 - FT009E
51000272	PILOTO TRASERO LED 02007DHLED3 DCHO.
51000273	PILOTO TRASERO LED 02007IZLED3 IZQ.
51000275	CATADIOPTICO AMBAR 04007
51000276	TRIANGULO ROJO 04010
51000280	PANEL PLACA V-5 VEHICULO LENTO 06050
53000502	ABRAZ.ACUMULADOR 80/88 MPC
53000647	PLACA RFZO ABRAZADERA KIT SEÑALIZACION
53000648	ABRAZ.2 TORN.D.88,9 SER. (C9-88-9) KIT LUCES
60000015	TORN.EXAG.DIN-933 8* 25 8.8 ZINC.
60000131	TUER.AUTO.DIN-980 8 8.8 ZINC.
60000140	TUER.AUTO.DIN-980 10 8.8 ZINC.
60000182	TORN.EXAG.DIN-931 6* 35 8.8 ZINC.
60000380	TUER.AUTO.DIN-985 6 8.8 ZINC.
60000537	TORN.EXAG.DIN-933 4* 20 8.8 ZINC.
60000540	TORN.EXAG.DIN-931 8*150 8.8 ZINC.
61000077	ARAND.DIN-125 4 ZINC.
63000268	CALZO AL-KO ZINCADO 5000kg TIPO UK 46 St
70356941	PLACA IZQ. SEÑALIZACION MAXIDISC (D/18)
70356942	PLACA DCH. SEÑALIZACION MAXIDISC (D/18)



FRONT WHEEL MAXIDISC II (>21)

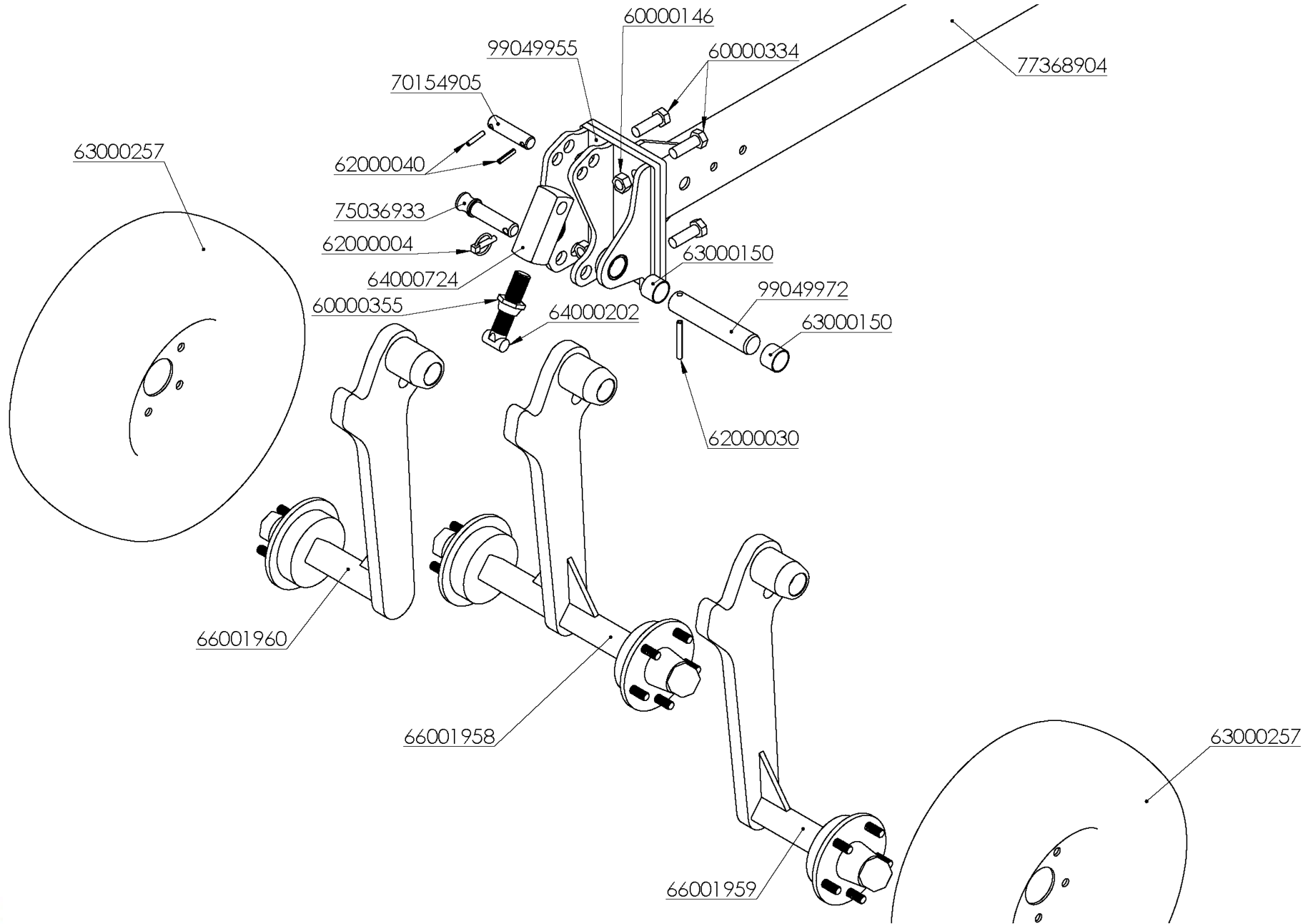


FRONT WHEEL MAXIDISC II (>21)

REFERENCIA	DESCRIPCIÓN
53004920	BULON D=25*175mm.BRAZO RDA.(D/03)
55007900	BULON D=25*160mm.TRANSP./CONTROL RDA.C/T
60000078	TORN.EXAG.DIN-933 16* 50 8.8 ZINC.
60000153	TUER.EXAG.DIN-934 1"SAE 8.8 ZINC.
60000160	TUER.EXAG.DIN-934 16 8.8 ZINC.
62000004	PASADOR ANILLA 10 ZINC.
62000010	PASADOR ELAST.DIN-1481 8* 40 ZINC.
62000011	PASADOR ELAST.DIN-1481 8* 50 ZINC.
62000041	PASADOR ELAST.DIN-1481 5* 50
63000072	CASQ.FRICCION PAP 2525 P10
63000257	R.N.C/ATAQUE 200/60*14,5"-10PR
64000041	SOP.TOPE MOVIL ZINC.
64000042	TOPE MOVIL TRATADO + ZINC.
66001953	BRAZO RDA.DOBLE NEUM.(200/60) MAXIDISC-A
66001954	BRAZO DCHO.RDA.NEUM.(200/60) MAXIDISC-A
66001955	BRAZO IZQDO.RDA.NEUM.(200/60) MAXIDISC-A
77368901	BRAZO SOP.RODILLO MAXIDISC-II C/RDA FRONTAL
90037900	BULON D=25*154mm.TOPE RDA.
99049934	SOP.RDA.DELANTERA MAXIDISC



FRONT WHEEL MAXIDISC II (>21)



FRONT WHEEL MAXIDISC II (>21)

REFERENCIA	DESCRIPCIÓN
60000146	TUER.AUTO.DIN-980 20 10.9 ZINC. CON SOBREGOLPE
60000334	TORN.EXAG.DIN-931 20* 60 8.8 ZINC.
60000355	TUER.TOPE VOLTEO 30/200 8.8 ZINC.
62000004	PASADOR ANILLA 10 ZINC.
62000030	PASADOR ELAST.DIN-1481 10* 80 ZINC.
62000040	PASADOR ELAST.DIN-1481 6* 60 ZINC.
63000150	CASQ.FRICCION PAP 4030 P10
63000257	R.N.C/ATAQUE 200/60*14,5"-10PR
64000202	TOPE MOVIL RDA.C/T TRATADO + ZINC.
64000724	SOP.TOPE MOVIL RDA.C/T NH ZINC.
66001958	BRAZO IZQD.RDA.DOBLE NEUM.(200/60) EURODISC (D/21)
66001959	BRAZO IZQD.RDA. NEUM.(200/60) EURODISC (D/21)
66001960	BRAZO DCHO.RDA. NEUM.(200/60) EURODISC (D/21)
70154905	BULON D=25*110mm.CILIND.MINI/GRADA/MCH
75036933	BULON BRAZO RODILLO VHC
77368904	BRAZO SOP.RODILLO MAXIDISC-II C/RDA FRONTAL (D/21)
99049955	SOP.IZQD.RDA.DELANTERA MAXIDISC
99049972	BULON D=40*200mm.BRAZO RDA.MCH-A





Polígono Industrial, C/ TAF, P163
34200 - Venta de Baños
Palencia - España



+34 979 76 10 11



comercial@ovlac.com



www.ovlac.com