

# MINIVID

# REV 2021



INSTRUCTIONS MANUAL AND SPARE PARTS LIST



# CONGRATULATIONS!

You have just acquired Ovlac machinery!

As the country's largest producer of agricultural machinery for soil tillage, we are honoured that you have chosen Ovlac as your trusted choice.

After many years of experience in the field, we make sure that you will be proud of your purchase in the same way that we are proud of the product we have created under the strictest quality standards.

For the correct use and enjoyment of this equipment, we strongly recommend that the customer read the instructions contained in this manual and use it as a reference for any questions that may arise regarding the operation of your Ovlac equipment.

Sincerely yours: Jorge Calvo

CEO of Ovlac



# CONSIDERATIONS

This instruction manual describes the Operating and Maintenance Instructions and Spare Parts for the indicated equipment.

This agricultural equipment, called MINIVID, is designed for tilling the soil, applied to a Tractor with lifting gear and universal threepoint linkage.

The proper functioning of the machine depends on its correct use. It is therefore advisable to read the instructions given in this manual carefully in order to avoid any inconvenience that could impair the proper functioning and durability of the machine.

It is also important to follow the instructions in the manual, as the Manufacturer declines all responsibility for negligence and non-observance of these instructions.

The Manufacturer is at your disposal to guarantee immediate and accurate technical assistance and to provide all that may be necessary for a better functioning and performance of the machine.

The Manufacturer reserves the right to modify the Machine without the need to urgently update this publication.



# INDEX

- 1.- Security Rules
- 2.- Description and technical data
- 3.- NON STOP Security System
- 4.- Turn Up
  - 4.1.- Adaptation to the tractor
  - 4.2.- Alignment
  - 4.3.- Other adjustments
- 5.- Working Depth
- 6.- Working Width
- 7.- Maintenance
- 8.- Optional equipment
- 9.- Spare Parts



# 1.- Security Rules

**Read carefully all the instructions for use of the cultivator.**

**The manufacturer declines all responsibility for any inconvenience caused by NOT observing the Safety and Accident Prevention Regulations described below.**

- 1.- Pay attention to the danger and warning symbols shown in this manual and indicated on the equipment.
- 2.- Repairs and adjustments to the equipment must always be carried out with the engine stopped and the tractor locked.
- 3.- It is strictly forbidden to transport people or animals on the equipment.
- 4.- It is strictly forbidden to entrust the driving of the tractor, with the equipment hooked up, to people without a driving license, inexperienced, or who are not in good condition.
- 5.- Scrupulously observe all the accident prevention measures recommended and described in this manual.
- 6.- The application of additional equipment to the tractor implies a different weight distribution on the tractor axles.
- 7.- Before putting the tractor and the equipment into operation, check that all the safety elements for transport and use are in perfect condition.
- 8.- The symbols with warnings displayed on the equipment give the appropriate suggestions for the use of the same.
- 9.- To circulate on the road, it is necessary to observe the rules of circulation according to the country where it's operated.
- 10.- Respect the maximum weight foreseen on the tractor, the total mobile weight, the transport regulations and the road code.
- 11.- Before starting to work, familiarise yourself with the control devices.
- 12.- Pay the utmost attention to hitching and unhitching the equipment.
- 13.- Never leave the driving position when the tractor is in motion.
- 14.- Remember that road adherence, steering and braking capacity may vary significantly due to the presence of suspended equipment.
- 15.- It is strictly forbidden to remain in the area of action of the equipment.
- 16.- Before leaving the tractor, lower the suspended equipment, stop the engine, apply the parking brake, and remove the ignition key from the dashboard.
- 17.- The category of the hitch pins of the equipment must correspond to that of the linkage of the lift.
- 18.- Pay maximum attention when working in the area of the arms of the tractor, it is a very dangerous area.
- 19.- It is strictly forbidden to stand between the tractor and the equipment to manoeuvre the external lifting control.
- 20.- During road transport with the equipment suspended, put the control lever of the hydraulic lift in the locking position.
- 21.- The spare parts must correspond to the requirements defined by the Manufacturer. Always use original spare parts.
- 22.- The safety instruction decals must always be clearly visible. Clean and replace them if they are not legible (You can ask your dealer for them).
- 23.- The instruction manual must be kept for the whole life of the equipment.



## WARNING

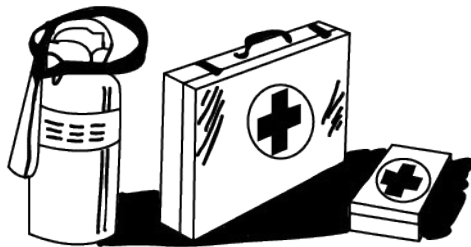
Before starting to work, read the instructions in the manual.

## DANGER

Do not handle the equipment when it is suspended, danger of crushing. Maintain the safety distance.

## DANGER

Lifting the equipment can cause injuries due to reaching. Maintain the safety distance.



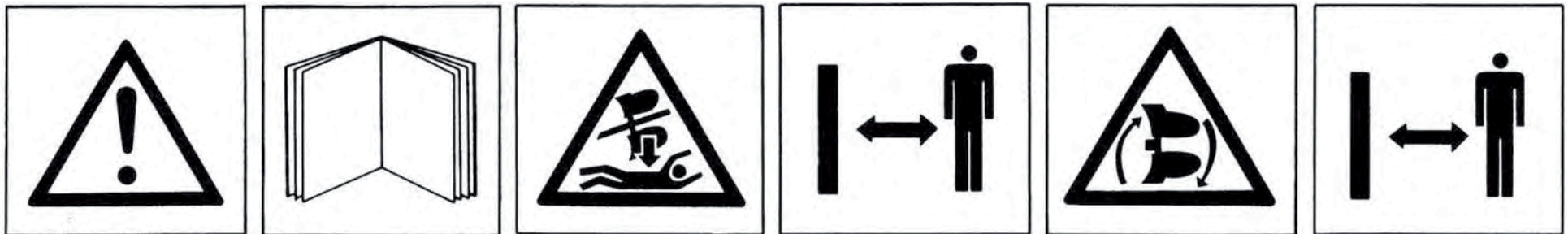
## To be ready in case of an emergency

Keep a first aid kit and fire extinguisher on hand. Write down the telephone numbers of doctors, ambulance and fire brigade and keep them near the phone.

## Use adequate clothes

Avoid loose clothing and use appropriate safety equipment depending on the type of work. Safe operation of the machine requires the full attention of the operator.

**Don't use headphones** for listening to the radio while working with the machine.



# SPECIFIC INSTRUCTIONS FOR WELDING REPAIRS

When repair by welding is authorised by the manufacturer, the following points shall be taken into account generally. In particular cases, appropriate welding instructions shall be provided for each application.

- 1** Repair welding should be carried out by qualified welders and in accordance with good technical and safety code practice.
- 2** Before welding repairs, remove paint, rust, dirt or any other substances harmful to the weld.
- 3** To avoid damage to mechanical or hydraulic components such as bearings, shafts, hydraulic actuators, hydraulic systems, etc., care should be taken to place the earth connection in an area of good contact, free of paint and rust.  
On machines with hydraulic cylinders, we must ensure that the welding current does not flow through such elements. For this purpose, the earth connection shall be placed on the same part of the machine to be repaired.

**4** Our machines are made of high elastic limit (HEL) steels, which means that special attention must be paid to welding processes and filler materials. In general, basic coated electrodes E7016 or E7018 will be used. For the MAG (semi-automatic) welding process, ER70S6 wire and Ar+20CO<sub>2</sub> will be used as shielding gas. In both cases, follow the recommendations for drying times and temperatures recommended by the manufacturers of the filler material.

**5** When the parts to be welded are thicker than 15 mm, or the ambient temperature is lower than 15 C, preheating by flame between 75-100 C is recommended.

**6** It is strictly forbidden to cool welding seams with water, air or any other substance.  
In case of questions during repair, please contact the manufacturer via the usual means of communication.

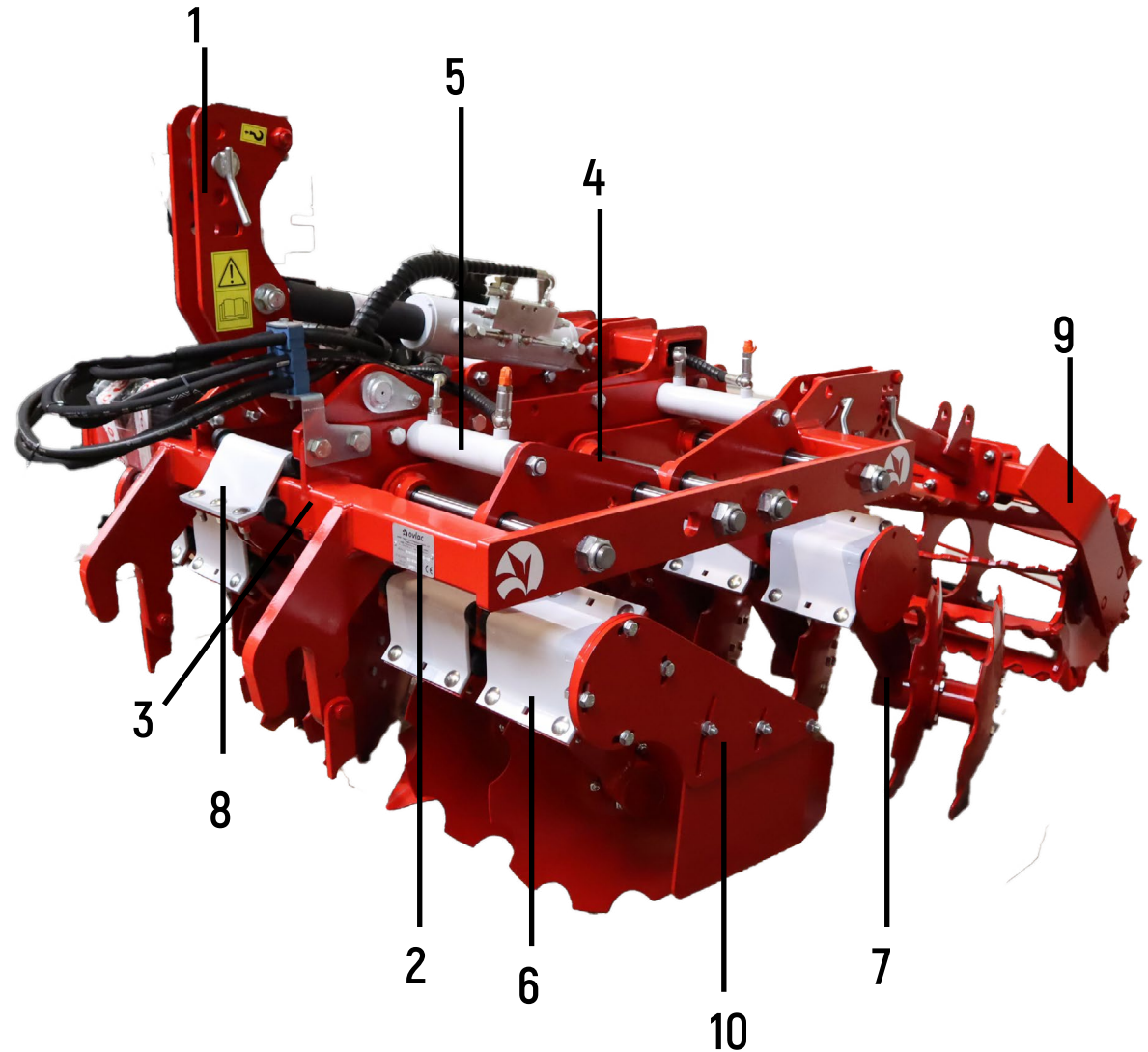


## 2.- Description and Technical Data

1. HEADSTOCK
2. IDENTIFICATION PLATE\*
3. BÂTI
4. CYLINDERS SET
5. SLIDING CYLINDERS HYDRAULIC SYSTEM
6. BODIES SET
7. ARM
8. SECURITY SYSTEM
9. ROLLERS SET
10. SIDEPLATES

**Note:** the number of the plough's manufacture, engraved on the nameplate, must match the number engraved on the headstock's support.

\*2. Identification plate



# Technical Data

MODELS	MINIVID-8	MINIVID-10 MINIVID-PRO 10	MINIVID-12 MINIVID-PRO 12	MINIVID-14 MINIVID-PRO 14	MINIVID-16 MINIVID-PRO 16	MINIVID-18 MINIVID-PRO 18
Working width (fix version)	1,05	1,40	1,65	1,90	2,15	2,40
Working Width (PRO version)	-	1,40 to 1,70	1,65 to 1,95	1,90 to 2,20	2,15 to 2,45	2,40 to 2,70
Transport Width	1,11	1,46	1,71	1,96	2,21	2,46
Recommended Power (CV)	60/70	60/70	60/70	70/80	80/90	80/100
Distance between discs (cm)	13 cm					
Distance between rows (cm)	72 cm					
Discs Angle	23° in advance / 5,6° of inclination					
Security	Rubber 40 mm					
Discs	8	10	12	14	16	18
Weight (with bars roller)	790	820/850	860/890	900/930	940/970	980/1.010





# 3.- Non-Stop Security Systems

"Non-Stop" rubber security systems act automatically. When the share it's facing an obstacle, the systems gives up, allowing the arm to elevate and dodge, getting back to its original position without stopping the tractor.

This way, every impact caued by uneven terrain will be absorbed by the security system, which protects the elements of the machine, and therefore, also the tractor.

For the same reason, "Non-Stop" security systems decrease the traction effort by avoiding the tractor to face all the obstacles by itself.

Note: OVLAC Non-Stop Security Systems are factory-regulated with an optimum pressure for mid-hardness terrains.

Rubber-shock absorbers

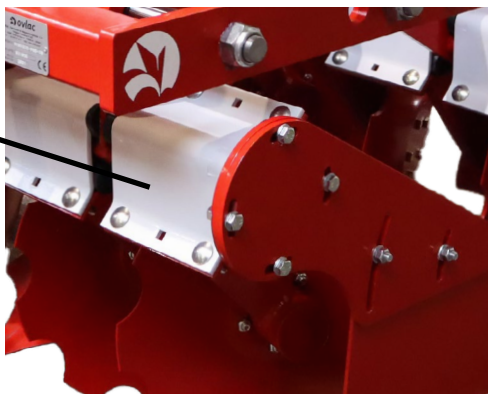


Fig. 1

# 4.- Turn Up

## 4.1 - Adaptation to the tractor

**OVLAC** Minivid are designed to adapt to the 3 universal points of any tractor.

Before linking the minivid you must check that:

- The tractor arms are regulated at the same length and height.
- Tractor wheels must have the same pressure and according to the rules of the manufacturer.
- The tractor arms must be centered with a slight margin for oscillating.



## 4.2 - Alignment

The cultivator must work aligned with the tractor, if not, the plough will tend to abandon the working direction. Must check that the distance  $A1=A2$  (Fig. 4).

On the cultivators, for the proper functioning of work levelling, is important to regulate and align correctly the lifting arms of the tractor with the cultivator and, if having a roller, along the arms, for a good depth control.

The 3rd link arm must be coupled in a way that the end that links over the cultivator remains slightly higher than the end linked on the tractor (Fig. 5).

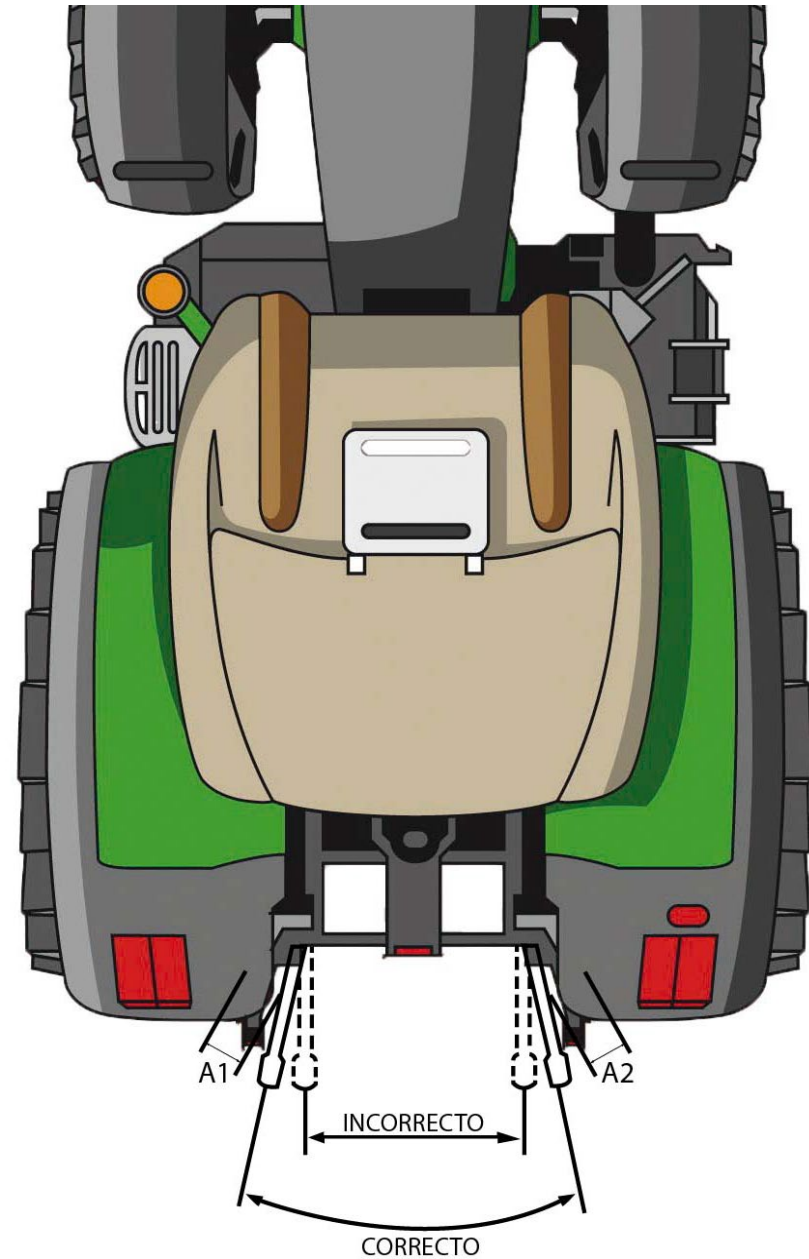


Fig. 2

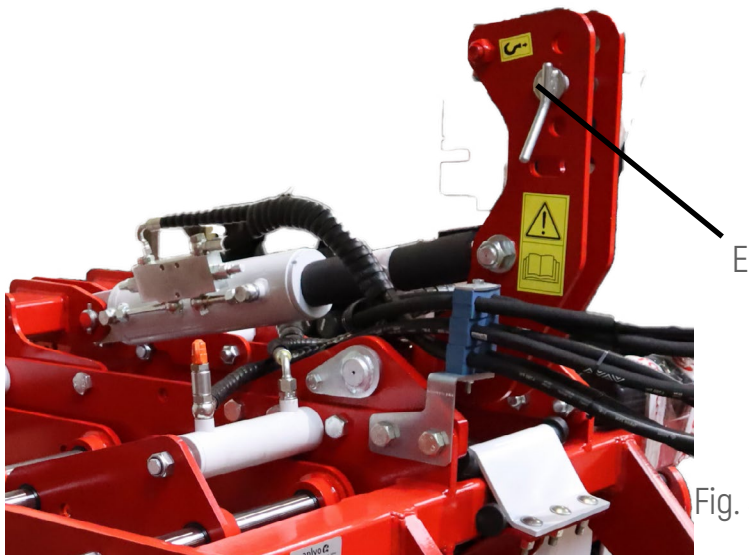
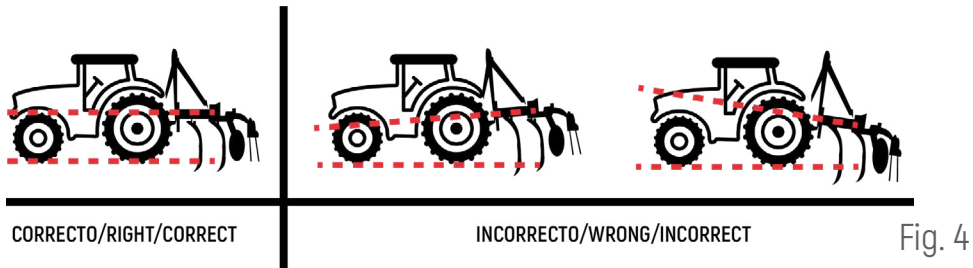


Fig. 3



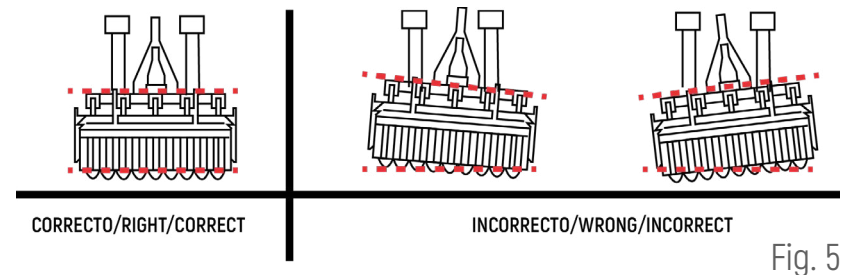
## 4.3 - Other adjustments

The length of the 3rd point must be adjusted in a way that the frame adopts a parallel position to the ground, if not, the rows of arms will work at uneven depths, causing a wrong labor. (Fig. 4)



For the same reason, is necessary for the tractor arms to be found at the same height, so the machine works at the same depth in its whole width (Fig. 5) and side triggers doesn't happen, so the tractor doesn't find it hard to keep its path. (Fig. 5)

**IMPORTANT:** Must try not totake curves while working, specially with very heavy machinery, since the pulling effort may cause severe damage to the machine's structure.

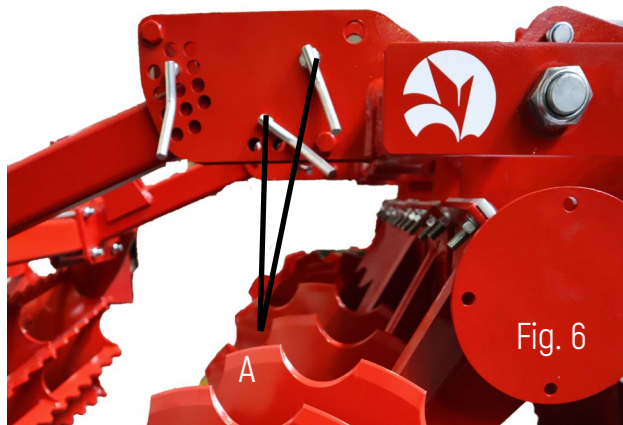


## 5.- Working Depth

Working depth is regulated with the standard roller through the regulation bolts A (Fig.6).

In no case the working depth will be such that the bushings of the discs remain at an adequate distance from the ground, watching that never get to touch the ground.

MINIVID PRO is equipped in the center of the machine an arm with share point to work on the central furrow. This arm is adjustable in height to adequate to the different conditions.



## 6.- Transport

At the machines with hydraulic adjustment of the disc row's width (Minivid Pro), this will be retracted in order to ease its transport, leaving the machine on its minimal width.



# 7.- Maintenance

Must check how tighten the bolts are after the first 2 hours of labor, specially the ones on the bodies and shares. Afterwards, check every 100 hours of labor. When finishing the campaign, wash the plough and grease the bodies to avoid rust.

**Lube:** Greasing points must be greased up regularly.

## Safe maintenance

Get familiar with the maintenance procedures before doing any labor. The working area must be clean and dry. Not doing any greasing labor, repair or adjustment while the engine is running. Keep the hands, feet, and clothes always far from the moving components. Place all the hydraulic controls on neutral-gear in order to relieve pressure. Lower all gear to the ground. All the components must be in good shape and correctly installed. Repair damage immediately. Change any wasted or broken piece. Keep all the components of the machine clean off of grease, oil and accumulated dirt. By dealing with trailed equipment, disconnecting the group of cables from the tractor before doing any welding on the machine.



## Watch out for the high pressure leaks

Leaking fluids from the system might leak strong enough to tear flesh, causing severe injuries. Therefore, is indispensable to leave the system pressure-less before loosing or disconnecting any pipe and assure that all the connections and connectors are well-tighten before applying pressure to the system. In order to locate an hydraulic oil leak use a piece of cardboard placed in between the connections. Don't get near high-pressure leakings. Even if after all this measures an accident happens, go immediately to see a doctor, who should remove the fluid surgically in a few hours in order to avoid gangrene. Unexperienced doctors with injuries of such nature may go to a specialized medical center.

Maintenance of hydraulic cylinders. **IMPORTANT:** keep the plugs clean. Abrasive particles, such as sand, metal sharps, may damage the cylinders, causing inner leaks. Once unplugged off the tractor, place the protection bolts and make sure they're not touching the ground.



## 8.- Optional equipment

Ovlac MINIVID (fixated or extensible) can be equipped with:

1. Extensible roller (Fig.7)
2. Sideplates (Fig.8)
3. Foldable headstock (Fig.9)



Fig. 7

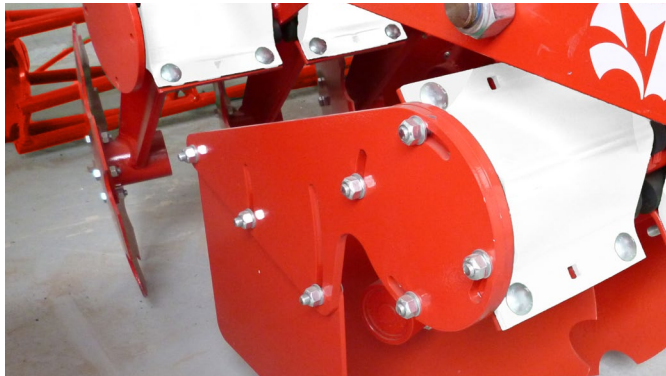


Fig. 8

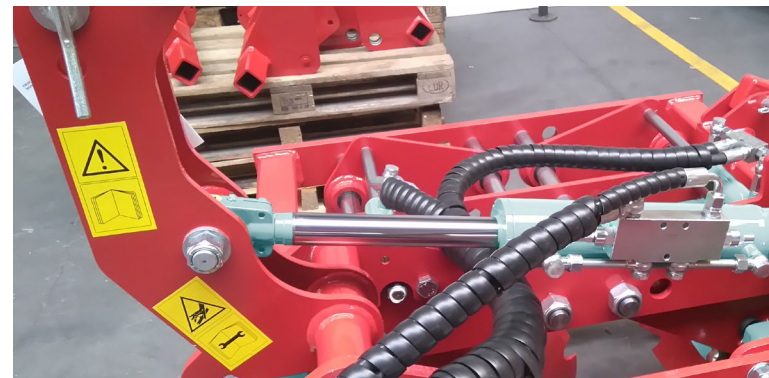


Fig. 9



# 9.- Spare Parts

Spare parts orders must always be placed through dealers and will include the next indications:

- Type, model and plough's number of manufacturing. This data is indicated on the identification plate of the plough.
- Reference of the piece. Indicated on the spareparts catalogue.
- Name of the piece and quantity required.
- Method of shipping. Transport expenses run of the purchaser.
- NOTE: The terms left or right, indicated on the name, are meant to be understood always facing the plough from its rear view. When it comes to supposed-to-break gear, rights are considered ll those that are part of the body that drifts to the righth and viceversa.

Note on warranty: must be clearly specified if the spare parts order are ordered under warranty time. The manufacturer will be the one to decide if the order stands to warranty or not when replacing the pieces. Plus, warranty loses all its value if:

- Repairs Unauthorized by the manufacturer are made, unoriginal spare parts and bolts are inadequate.
- User goes through the power limit stated on the technical data sheet, or abnormal maneuvers are made.





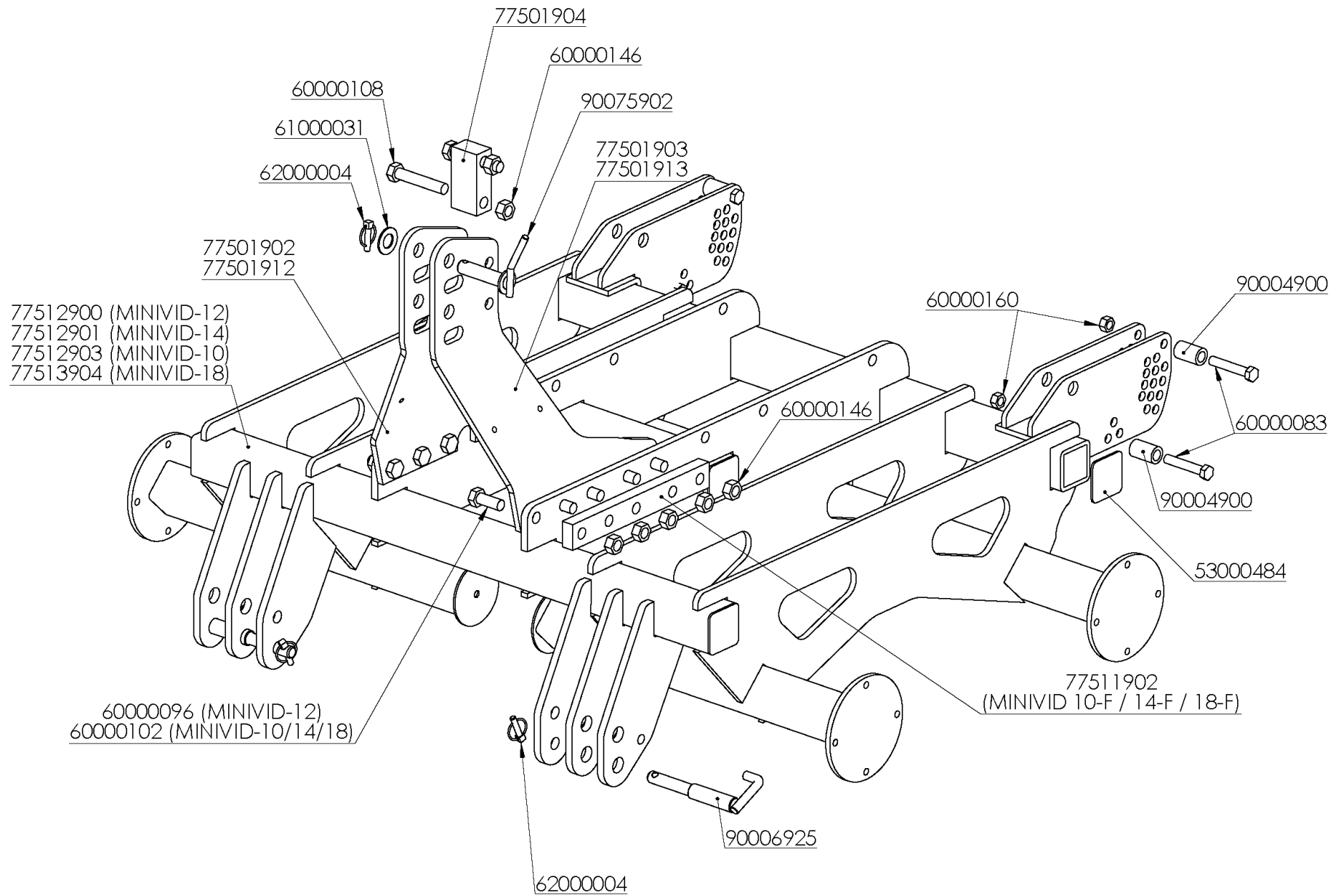


# Index

BEAM / FRAME FIX MINIVID.....	17
BEAM / FRAME MINIVID PRO.....	19
HYDRAULIC SYSTEM LATERAL FRAMES.....	21
FOLDABLE HEADSTOCK (<2022).....	23
NEW FOLDABLE HEADSTOCK (>2022).....	25
HYDRAULIC SYSTEM FOLDABLE HEADSTOCK.....	27
MINIVID BODY.....	29
MCH MINIVID BODY.....	31
DISC SUPPLEMENT MINIVID BODY.....	33
MINIVID MODULE.....	35
METALLIC DEFLECTORS ASSEMBLY.....	37
ROLLER ASSEMBLY.....	39
TINE ASSEMBLY.....	41
TINE AND ROLLER ASSEMBLY.....	43
ASSEMBLY MINIVID.....	45



# BEAM / FRAME FIX MINIVID

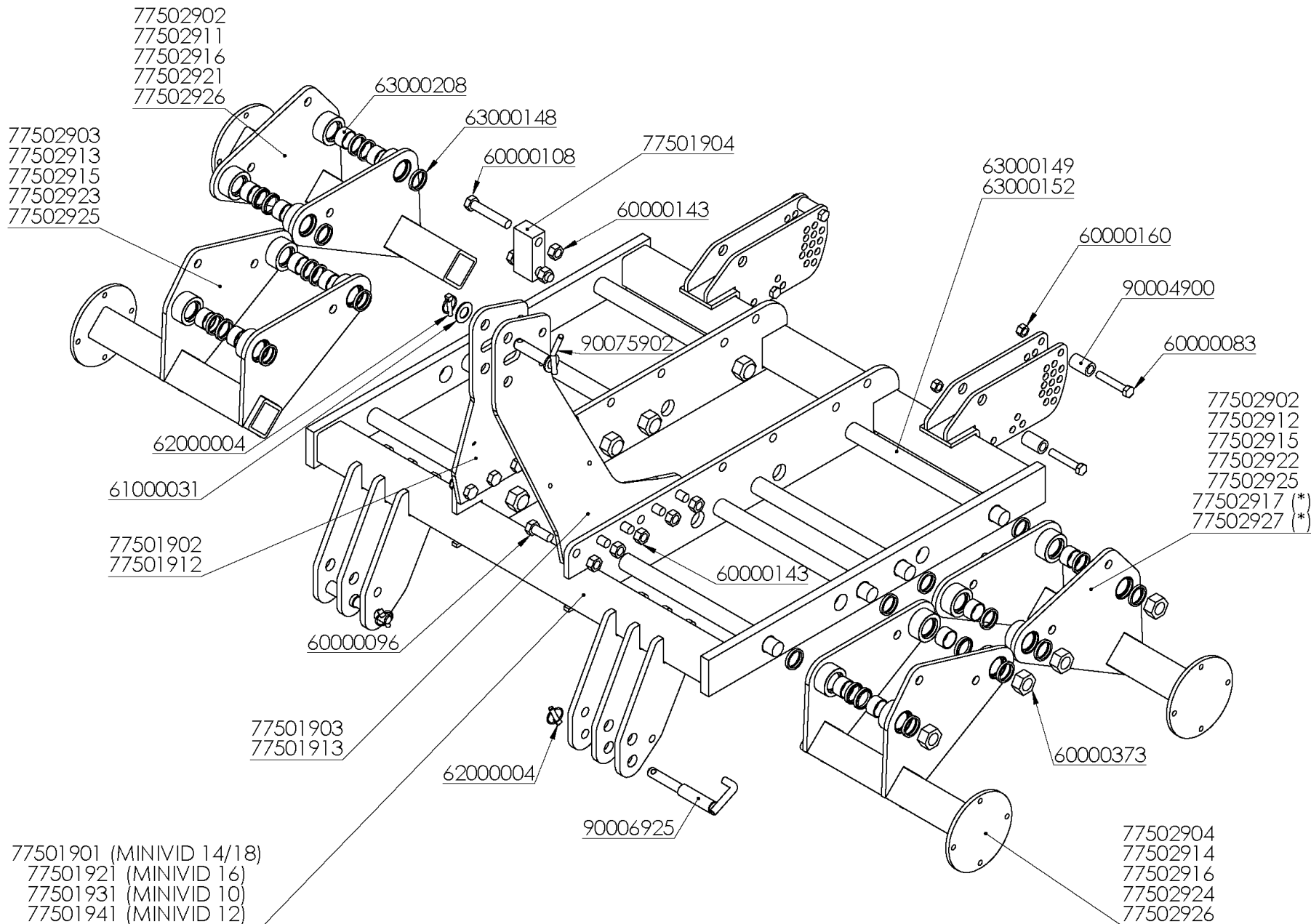


## BEAM / FRAME FIX MINIVID

REFERENCIA	DESCRIPCIÓN	REFERENCIA	DESCRIPCIÓN
53000484	TAPON PVC 80x80	77501904	LLANTA UNION TORRETA MINIVID
60000083	TORN.EXAG.DIN-931 16* 90 8.8	77501912	PLACA TORRETA DCH.MINIVID (D/16)
60000096	TORN.EXAG.DIN-933 20* 50 8.8	77501913	PLACA TORRETA IZQD.MINIVID (D/16)
60000102	TORN.EXAG.DIN-931 20* 80 8.8	77511902	LLANTA CALZO TORRETA MINIVID
60000108	TORN.EXAG.DIN-931 20*110 8.8 ZINC.	77512900	BAST.MINIVID-12 FIJA P/BULONES
60000146	TUER.AUTO.DIN-980 20 10.9 ZINC.	77512901	BAST.MINIVID-14 FIJA P/BULONES
60000160	TUER.EXAG.DIN-934 16 8.8 ZINC.	77512903	BAST.MINIVID-10 FIJA P/BULONES
61000031	ARAND.STANDAR S/BISEL CL-26 ZINC.(50x27x3)	77512904	BAST.MINIVID-18 FIJA P/BULONES
62000004	PASADOR ANILLA 10 ZINC.	90004900	SEP.B.P.32/20* 52mm.
77501902	PLACA TORRETA DCH.MINIVID	90006925	BULON D=28/22*200mm.ENG.REPTILL
77501903	PLACA TORRETA IZQD.MINIVID	90075902	BULON D=25*110mm.3er.PTO.CAT.II ZINC.



# BEAM / FRAME MINIVID PRO

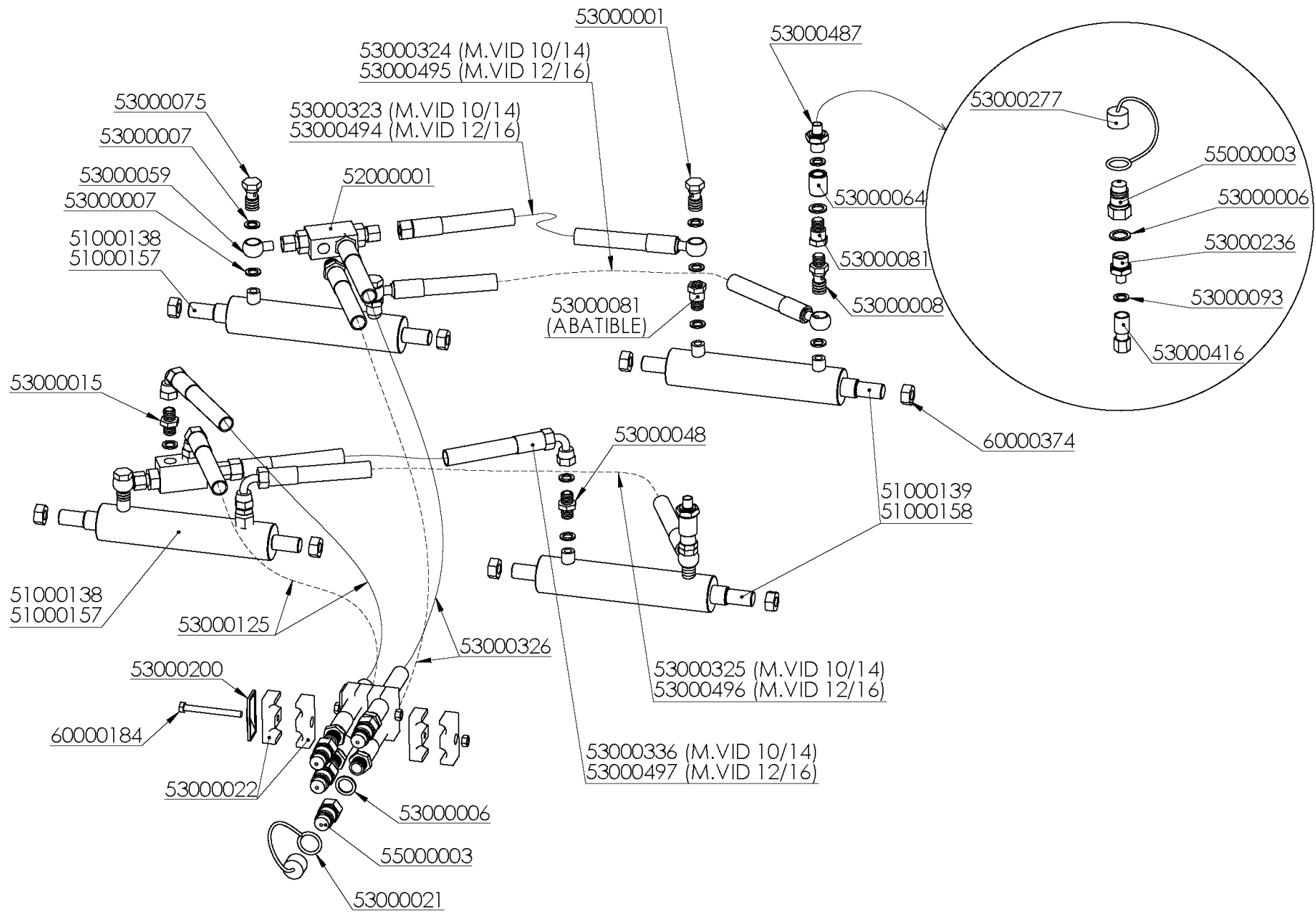


# BEAM / FRAME MINIVID PRO

REFERENCIA	DESCRIPCIÓN	REFERENCIA	DESCRIPCIÓN
60000083	TORN.EXAG.DIN-931 16* 90 8.8	77502902	PAÑO TRAS.IZQD.MINIVID-18
60000096	TORN.EXAG.DIN-933 20* 50 8.8	77502903	PAÑO DEL.DCH.MINIVID-18
60000108	TORN.EXAG.DIN-931 20*110 8.8 ZINC.	77502904	PAÑO DEL.IZQD.MINIVID-18
60000143	TUER.AUTO.DIN-980 16 8.8 ZINC.	77502911	PAÑO TRAS.DCH.MINIVID-14
60000160	TUER.EXAG.DIN-934 16 8.8 ZINC.	77502912	PAÑO TRAS.IZQD.MINIVID-14
60000373	TUER.AUTO.DIN-985 33/200 8.8 ZINC.	77502913	PAÑO DEL.DCH.MINIVID-14
61000031	ARAND.STANDAR S/BISEL CL-26 ZINC.(50x27x3)	77502914	PAÑO DEL.IZQD.MINIVID-14
62000004	PASADOR ANILLA 10 ZINC.	77502915	PAÑO TRAS.IZQD.DEL.DCHO.MINIVID-16
63000148	RASCADOR METALICO 40-50-7/10	77502916	PAÑO TRAS.DCH.DEL.IZQD.MINIVID-16
63000149	BARRA CROMADA MECANIZADA D=40*800 F-125	77502917	PAÑO TRAS.IZQD.MINIVID-16 (D/18)
63000152	BARRA CROMADA MECANIZADA D=40*550 F-125-TRATADO	77502921	PAÑO TRAS.DCH.MINIVID-10
63000208	GUIA VASTAGO ORKOT 40-45-25	77502922	PAÑO TRAS.IZQD.MINIVID-10
77501901	BAST.MINIVID-14/18 P/BULONES	77502923	PAÑO DEL.DCH.MINIVID-10
77501902	PLACA TORRETA DCH.MINIVID	77502924	PAÑO DEL.IZQD.MINIVID-10
77501903	PLACA TORRETA IZQD.MINIVID	77502925	PAÑO TRAS.IZQD.DEL.DCHO.MINIVID-12
77501904	LLANTA UNION TORRETA MINIVID	77502926	PAÑO TRAS.DCH.DEL.IZQD.MINIVID-12
77501912	PLACA TORRETA DCH.MINIVID (D/16)	77502927	PAÑO TRAS.IZQD.MINIVID-12 (D/18)
77501913	PLACA TORRETA IZQD.MINIVID (D/16)	90004900	SEP.B.P.32/20* 52mm.
77501921	BAST.MINIVID-16 P/BULONES	90006925	BULON D=28/22*200mm.ENG.REPTILL
77501931	BAST.MINIVID-10 P/BULONES	90075902	BULON D=25*110mm.3er.PTO.CAT.II ZINC.
77501941	BAST.MINIVID-12 P/BULONES		



# HYDRAULIC SYSTEM LATERAL FRAMES

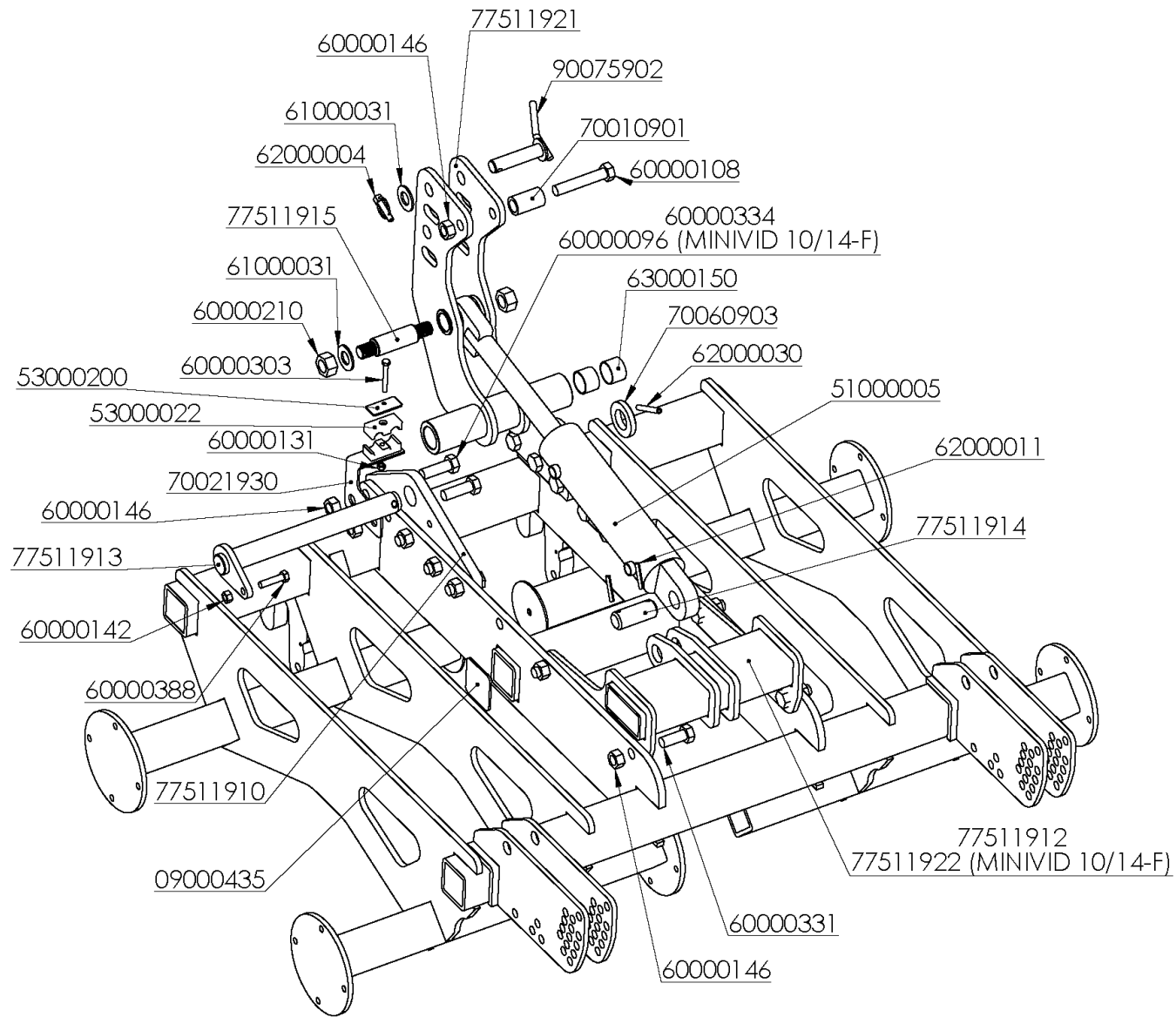


# HYDRAULIC SYSTEM LATERAL FRAMES

REFERENCIA	DESCRIPCIÓN	REFERENCIA	DESCRIPCIÓN
51000138	CILIND.C/AMARRE ROSC.ALARG.25/40/150	53000125	LATIG.R2-3/8*2290mm.MF-1/2/CTL-3/8
51000139	CILIND.C/AMARRE ROSC.ALARG.30/50/150	53000200	PLACA RFZO.AB.DOUBLE 19 GD3D
51000157	CILIND.C/AMARRE ROSC.ALARG.25/40/140	53000236	UNION REDUCCION 1/4-1/2 4371
51000158	CILIND.C/AMARRE ROSC.ALARG.30/50/140	53000277	PROTECTOR E.R.MACHO 1/2" AZUL 5029-4PB
52000001	VALV.BLOQUEO ZINC.12 VBD38	53000323	LATIG.R2-3/8* 500mm.OR-3/8/TL-18
53000001	TORNILLO SIMPLE 3/8 4022	53000324	LATIG.R2-3/8* 630mm.OR/OR-3/8
53000006	JUNTA METAL/GOMA 1/2" 11603	53000325	LATIG.R2-3/8* 680mm.OR-3/8/CTL-18
53000007	JUNTA METAL/GOMA 3/8" 11602	53000326	LATIG.R2-3/8*2100mm.MF-1/2/MF-3/8
53000008	TORNILLO PROLONGACION 3/8 4182	53000336	LATIG.R2-3/8* 570mm.CTL-18/TL-18
53000015	UNION MACHO 3/8 4062	53000416	ADAP.MANOMETRO 16*200 1/4G GLI-MH181604
53000021	PROTECTOR E.R.MACHO 1/2 " ROJO 5029-4PR	53000487	ADAPTADOR M.TOMA PRESION 3/8-16x200 MH191606
53000022	ABRAZ.DOUBLE D=19mm. 1D19PP	53000494	LATIG.R2-3/8* 760mm.OR-3/8/TL-18
53000048	UNION MACHO BSP 3/8-12 GE12-L	53000495	LATIG.R2-3/8* 890mm.OR/OR-3/8
53000059	ESFERICO 3/8" TUBO 12mm.CORTO 4002E	53000496	LATIG.R2-3/8* 940mm.OR-3/8/CTL-18
53000064	MANGUITO UNION 3/8 4132	53000497	LATIG.R2-3/8* 830mm.CTL-18/TL-18
53000075	TORNILLO SIMPLE 3/8 REDUCTOR 4022-T	55000003	ADAPTADOR E.R.FASTER 1/2" 30410108
53000081	SUPLEMENTO 3/8" 4092	60000184	TORN.EXAG.DIN-931 8* 80 8.8 ZINC.
53000093	JUNTA METAL GOMA 1/4 11601	60000374	TUER.AUTO.DIN-985 20/150 8.8 ZINC.



# FOLDABLE HEADSTOCK (<2022)



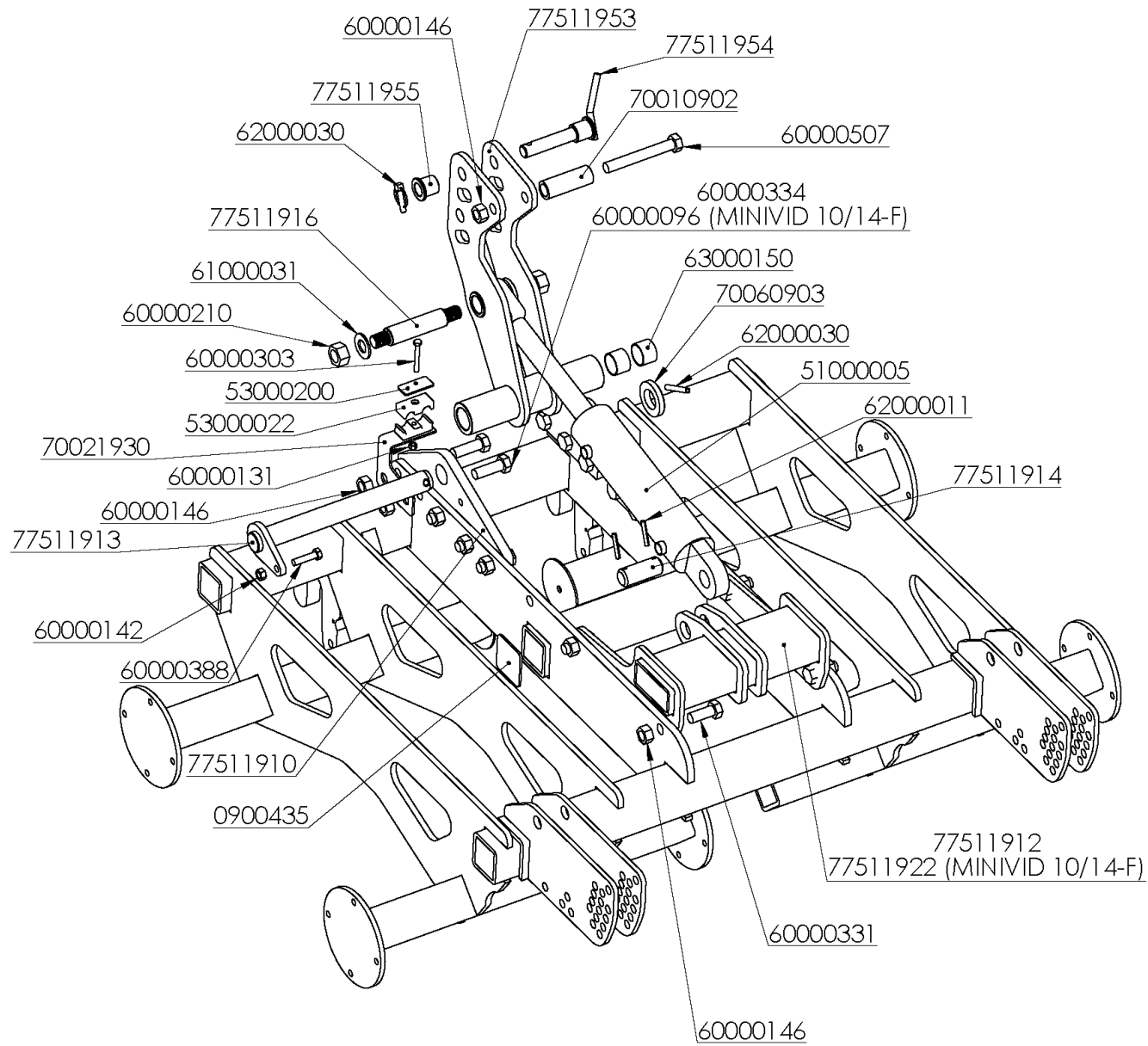


## FOLDABLE HEADSTOCK (<2022)

REFERENCIA	DESCRIPCIÓN	REFERENCIA	DESCRIPCIÓN
9000435	TAPON GOMA 120* 60* 6mm.	62000004	PASADOR ANILLA 10 ZINC.
51000005	CILIND.D.E.40-80-250 ROTULAS	62000011	PASADOR ELAST.DIN-1481 8* 50 ZINC.
53000022	ABRAZ.DOUBLE D=19mm. 1D19PP	62000030	PASADOR ELAST.DIN-1481 10* 80 ZINC.
53000200	PLACA RFZO.AB.DOUBLE 19 GD3D	63000150	CASQ.FRICCION PAP 4030 P10
60000096	TORN.EXAG.DIN-933 20* 50 8.8	70010901	SEP.B.P.36/25* 60mm.
60000108	TORN.EXAG.DIN-931 20*110 8.8 ZINC.	70021930	SOP.LATIG.MINIVID ABATIBLE
60000131	TUER.AUTO.DIN-980 8 8.8 ZINC.	70060903	ARAND.P/BULON PLEG.CH/MCH/DISC
60000142	TUER.AUTO.DIN-980 12 8.8 ZINC.	77511910	PLACA SOP.TORRETA ABATIBLE MINIVID
60000146	TUER.AUTO.DIN-980 20 10.9 ZINC.	77511912	SOP.CIL.TORRETA ABATIBLE MINIVID
60000210	TUER.AUTO.DIN-985 1" SAE 8.8	77511913	BULON D=40*395mm.ABAT.MINIVID
60000303	TORN.EXAG.DIN-931 8* 65 8.8 ZINC.	77511914	BULON D=34,8*86mm.CILIND.ABAT.MINIVID
60000331	TORN.EXAG.DIN-933 20* 50 8.8 ZINC.	77511915	BULON ROSCADO CILIND.ABAT.MINIVID
60000334	TORN.EXAG.DIN-931 20* 60 8.8 ZINC.	77511921	TORRETA ABATIBLE MINIVID (D/16)
60000388	TORN.EXAG.DIN-933 12* 50 8.8 ZINC.	77511922	SOP.CIL.TORRETA ABATIBLE MINIVID 10/14-F
61000031	ARAND.STANDAR S/BISEL CL-26 ZINC.(50x27x3)	90075902	BULON D=25*110mm.3er.PTO.CAT.II ZINC.



# NEW FOLDABLE HEADSTOCK (>2022)

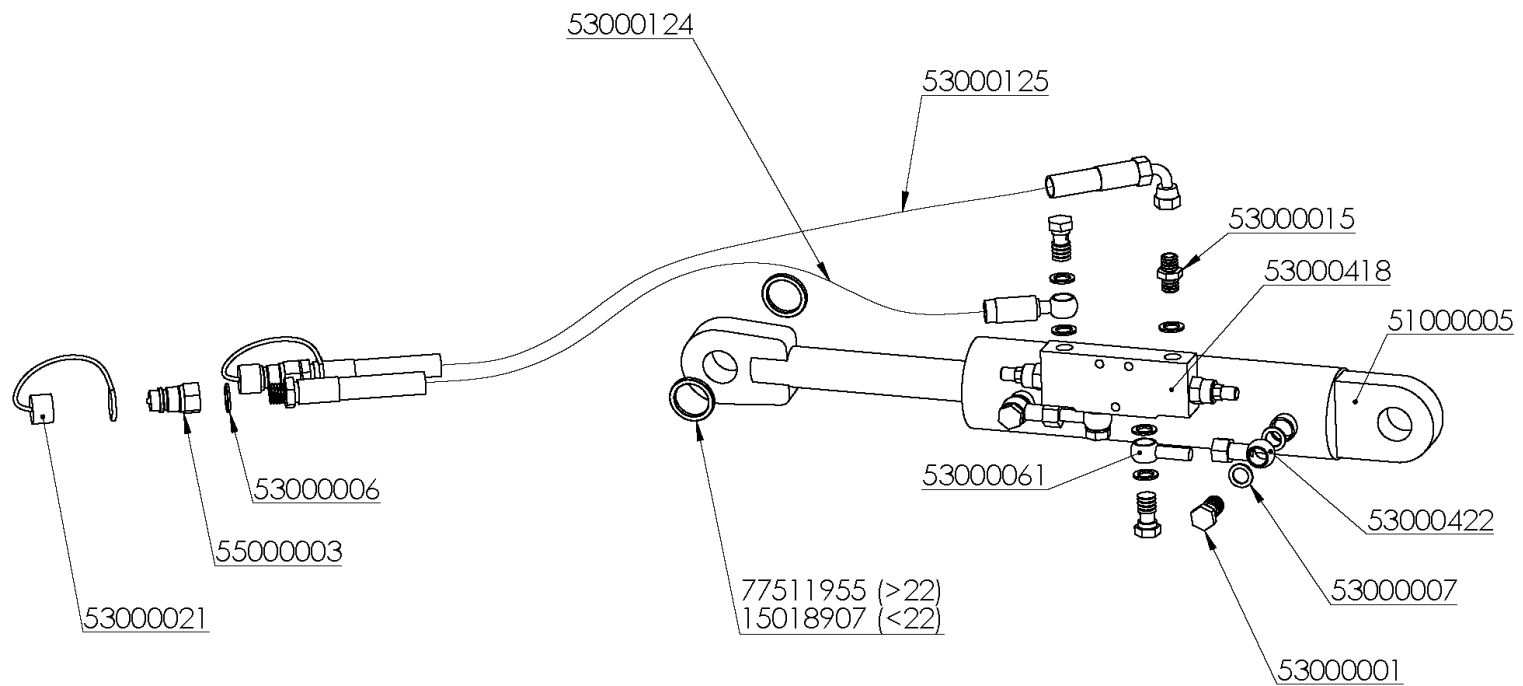


## NEW FOLDABLE HEADSTOCK (>2022)

REFERENCIA	DESCRIPCIÓN	REFERENCIA	DESCRIPCIÓN
51000005	CILIND.D.E.40-80-250 ROTULAS	63000150	CASQ.FRICCION PAP 4030 P10
53000022	ABRAZ.DOBLE D=19mm. 1D19PP	70010902	SEP.B.P.36/25* 96mm.
53000200	PLACA RFZO.AB.DOBLE 19 GD3D	70021930	SOP.LATIG.MINIVID ABATIBLE
60000096	TORN.EXAG.DIN-933 20* 50 8.8	70060903	ARAND.P/BULON PLEG.CH/MCH/DISC
60000131	TUER.AUTO.DIN-980 8 8.8 ZINC.	77511910	PLACA SOP.TORRETA ABATIBLE MINIVID
60000142	TUER.AUTO.DIN-980 12 8.8 ZINC.	77511912	SOP.CIL.TORRETA ABATIBLE MINIVID
60000146	TUER.AUTO.DIN-980 20 10.9 ZINC.	77511913	BULON D=40*395mm.ABAT.MINIVID
60000210	TUER.AUTO.DIN-985 1" SAE 8.8	77511914	BULON D=34,8*86mm.CILIND.ABAT.MINIVID
60000303	TORN.EXAG.DIN-931 8* 65 8.8 ZINC.	77511916	BULON ROSCADO CILIND.ABAT.MINIVID (D/22)
60000331	TORN.EXAG.DIN-933 20* 50 8.8 ZINC.	77511922	SOP.CIL.TORRETA ABATIBLE MINIVID 10/14-F
60000334	TORN.EXAG.DIN-931 20* 60 8.8 ZINC.	77511953	TORRETA ABATIBLE MINIVID (D/22)
60000388	TORN.EXAG.DIN-933 12* 50 8.8 ZINC.	77511954	BULON D=25/35,2*151mm.3er.PTO.TORR.ABAT.
60000507	TORN.EXAG.DIN-931 20*150 8.8 ZINC.	77511955	BULON D=25/35,2*151mm.3er.PTO.TORR.ABAT.
61000031	ARAND.STANDAR S/BISEL CL-26 ZINC.(50x27x3)	90075902	BULON D=25*110mm.3er.PTO.CAT.II ZINC.
62000011	PASADOR ELAST.DIN-1481 8* 50 ZINC.	09000435	TAPON GOMA 120* 60* 6mm.
62000030	PASADOR ELAST.DIN-1481 10* 80 ZINC.		



# HYDRAULIC SYSTEM FOLDABLE HEADSTOCK

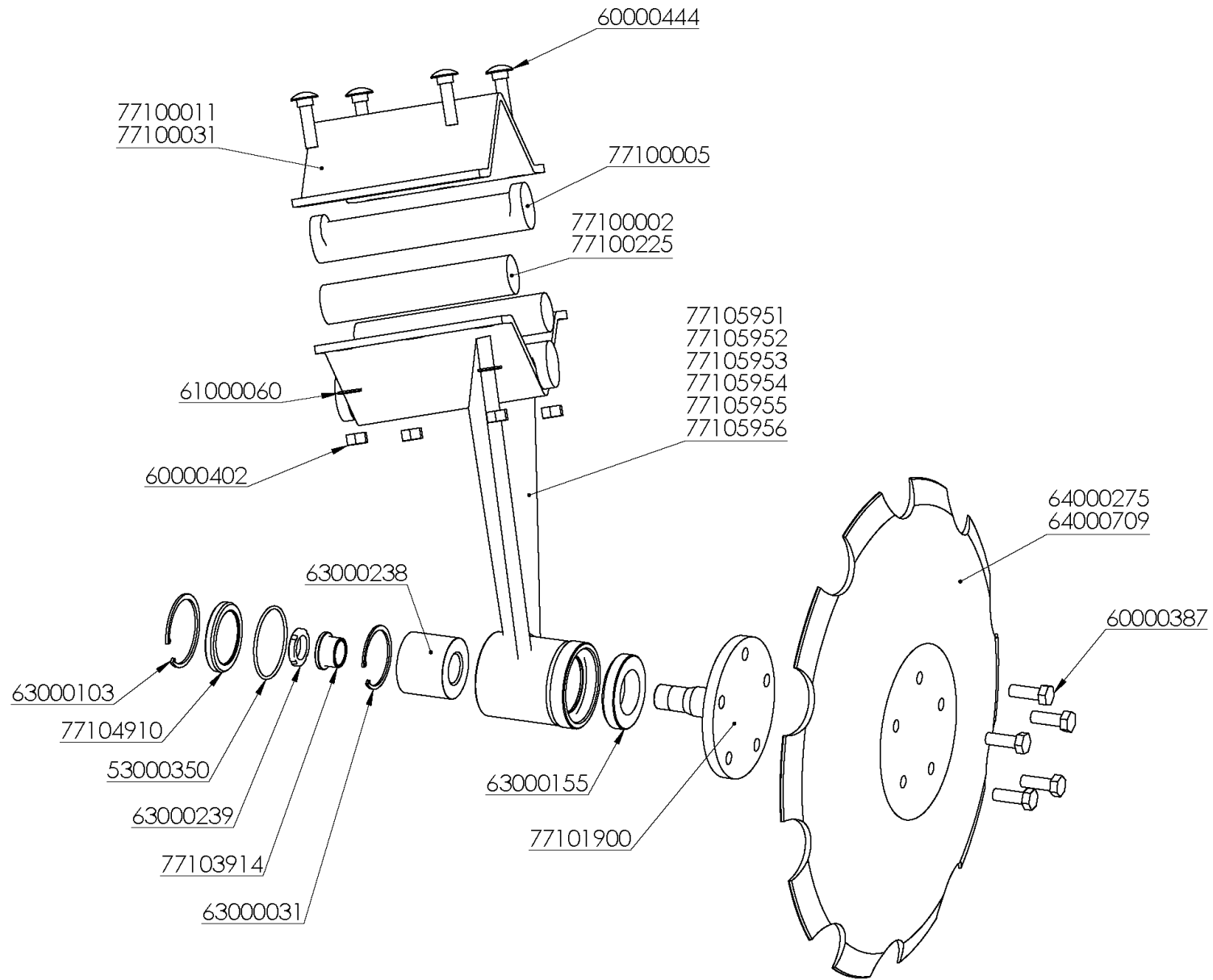


## HYDRAULIC SYSTEM FOLDABLE HEADSTOCK

REFERENCIA	DESCRIPCIÓN
51000005	CILIND.D.E.40-80-250 ROTULAS
53000001	TORNILLO SIMPLE 3/8 4022
53000006	JUNTA METAL/GOMA 1/2" 11603
53000007	JUNTA METAL/GOMA 3/8" 11602
53000015	UNION MACHO 3/8 4062
53000021	PROTECTOR E.R.MACHO 1/2" ROJO 5029-4PR
53000061	ESFERICO 3/8" TUBO 12mm.LG=205 4002E-205
53000124	LATIG.R2-3/8*2250mm.MF-1/2/OR-3/8
53000125	LATIG.R2-3/8*2290mm.MF-1/2/CTL-3/8
53000418	VALV.OVERCENTER VBCD 3/8 DE-A (V0422)
53000422	ESFERICO 3/8" + UNION TUBO/TUBO 12
55000003	ADAPTADOR E.R.FASTER 1/2" 30410108
15018907	CASQ.D=45/35*5 SEP.PLEGADOS.CICRO
77511955	CASQ.D= 45/35,2/25,2*37mm.TORR.ABAT.



# MINIVID BODY

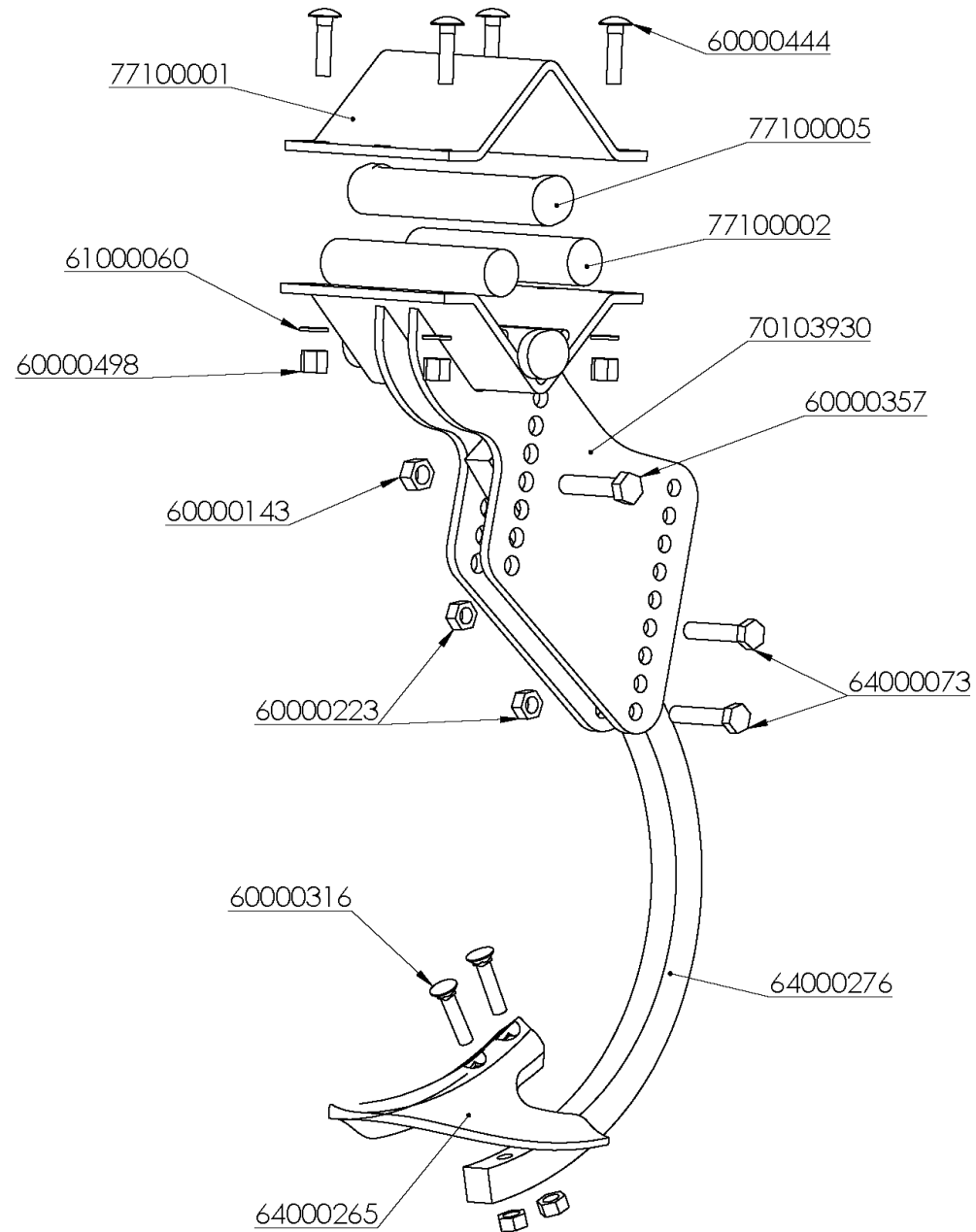


# MINIVID BODY

REFERENCIA	DESCRIPCIÓN	REFERENCIA	DESCRIPCIÓN
53000350	JUNTA TORICA 69.44-3.53	77100011	LLANTA AMARRE MINIDISC
60000387	TORN.EXAG.DIN-933 12* 35 8.8 ZINC.	77100031	LLANTA AMARRE DISCO NON-STOP VBC
60000402	TUER.EXAG.DIN-934 12 10.9 ZINC.	77100225	SUSPENSION ELASTICA D=40*160mm.
60000444	TORN.ARADO DIN-603/934 12*50 10.9 ZINC.	77101900	CONJ.EJE DISCO MINIDISC
61000060	ARAND.DIN-125 300HV 12 ZINC.	77103914	CASQUILLO TUERCA CONJ.MINIDISC (D/16)
63000031	ANILLO ELASTICO DIN-472 62	77104910	TAPA BUJE DISCOS MINIDISC (D/07)
63000103	ANILLO ELASTICO DIN-472 72	77105951	CONJ.BRAZO LAT.IZQD.MINIVID (D/16)
63000155	RETEN AP6 45*75*12,5	77105952	CONJ.BRAZO LAT.DCH.MINIVID (D/16)
63000238	CARTUCHO GRADA FC41394	77105953	CONJ.BRAZO IZQD.MINIVID (D/16)
63000239	TUERCA FIJACION KMA 5	77105954	CONJ.BRAZO DCH.MINIVID (D/16)
64000275	DISCO CONCAVO MUESC.MINIDISC 1968-20" 6mm.(D/12)	77105955	CONJ.BRAZO CENTRAL IZQD.MINIVID (D/16)
64000709	DISCO CONCAVO MUESCADO GRADA RAP/VIÑA 20" 6mm.	77105956	CONJ.BRAZO CENTRAL DCH.MINIVID (D/16)
77100002	SUSPENSION ELASTICA D=40*200mm.	77615911	TORNILLERIA CONJ.CUERPO MINIDISC (D/16)
77100005	SUSPENSION ELASTICA D=40*226mm.C/RESALTE		



# MCH MINIVID BODY



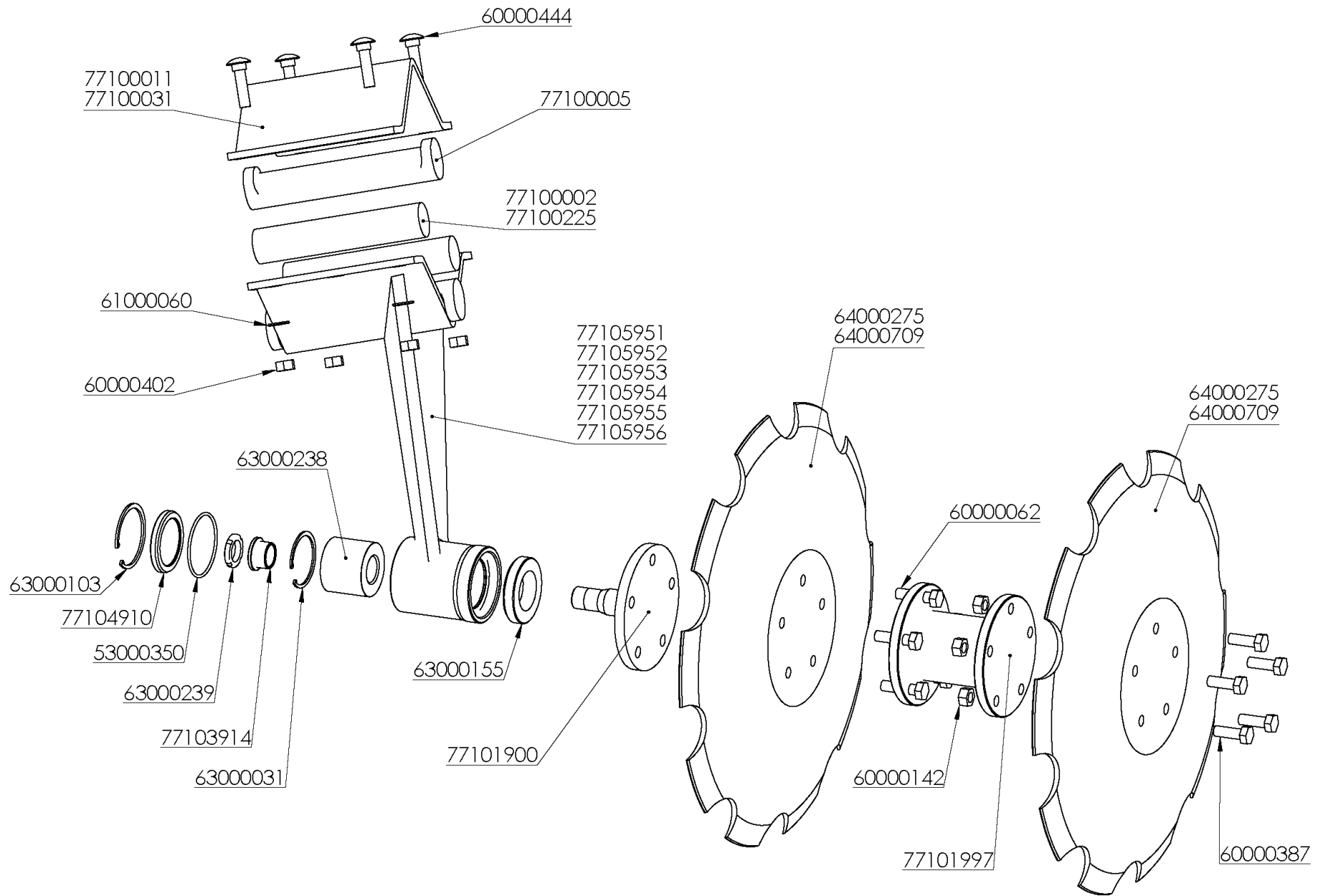


## MCH MINIVID BODY

REFERENCIA	DESCRIPCIÓN
60000143	TUER.AUTO.DIN-980 16 8.8 ZINC.
60000223	TUER.AUTO.DIN-980 14 8.8 ZINC.
60000316	TORN.ARADO DIN-608/934 12*55 8.8
60000357	TORN.EXAG.DIN-931 16* 70 8.8
60000444	TORN.ARADO DIN-603/934 12*50 10.9 ZINC.
60000498	TUER.ABARCON DIN-6330B 12 10.9 ZINC.
61000060	ARAND.DIN-125 300HV 12 ZINC.
64000073	VERTEDERA ENDURAX 1834-D-CAV (64000579)
64000265	REJA PIÑA C-4-A BINADORA C/N
64000276	BRAZO CHISEL 30*30 (TALADRO HORIZONTAL)
70103930	AMARRE MCH MINIVID
77100001	LLANTA AMARRE MCH
77100002	SUSPENSION ELASTICA D=40*200mm.
77100005	SUSPENSION ELASTICA D=40*226mm.C/RESALTE



# DISC SUPPLEMENT MINIVID BODY

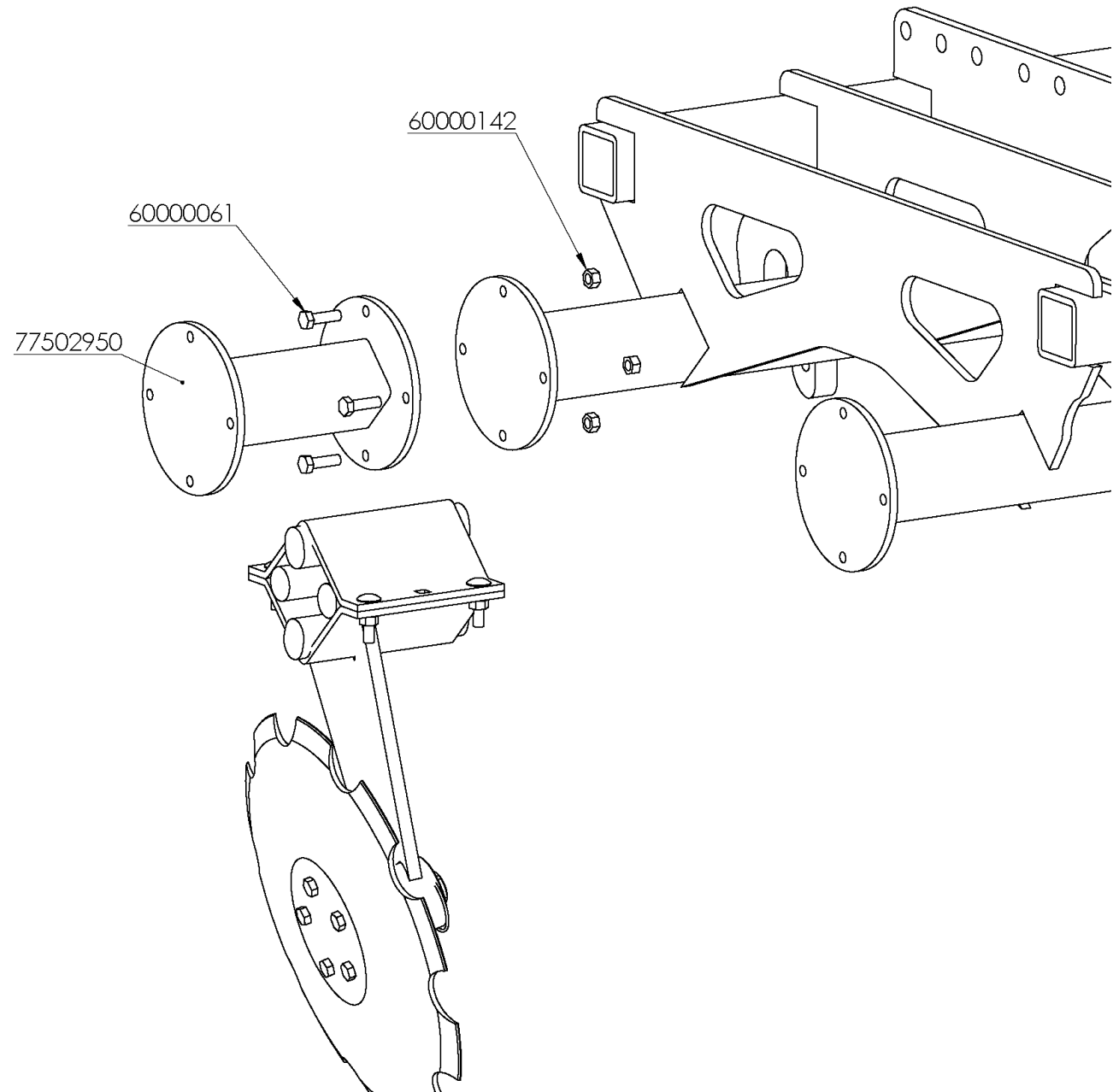


## DISC SUPPLEMENT MINIVID BODY

REFERENCIA	DESCRIPCIÓN	REFERENCIA	DESCRIPCIÓN
53000350	JUNTA TORICA 69.44-3.53	77100005	SUSPENSION ELASTICA D=40*226mm.C/RESALTE
60000062	TORN.EXAG.DIN-931 12* 45 10.9 ZINC.	77100011	LLANTA AMARRE MINIDISC / MAXIDISC
60000142	TUER.AUTO.DIN-980 12 8.8 ZINC.	77100031	LLANTA AMARRE DISCO NON-STOP VBC
60000387	TORN.EXAG.DIN-933 12* 35 8.8 ZINC.	77100225	SUSPENSION ELASTICA D=40*160mm.
60000402	TUER.EXAG.DIN-934 12 10.9 ZINC.	77101900	CONJ.EJE DISCO MINIDISC
60000444	TORN.ARADO DIN-603/934 12*50 10.9 ZINC.	77101997	SEPARADOR DISCOS MINIVID 120mm.
61000060	ARAND.DIN-125 300HV 12 ZINC.	77103914	CASQUILLO TUERCA CONJ.MINIDISC (D/16)
63000031	ANILLO ELASTICO DIN-472 62	77104910	TAPA BUJE DISCOS MINIDISC (D/07)
63000103	ANILLO ELASTICO DIN-472 72	77105951	CONJ. BRAZO LAT. IZQD. MINIVID (D/16)
63000155	RETEN AP6 45*75*12,5	77105952	CONJ.BRAZO LAT.DCH.MINIVID (D/16)
63000238	CARTUCHO GRADA 20"	77105953	CONJ.BRAZO IZQD.MINIVID (D/16)
63000239	TUERCA FIJACION KMA 5	77105954	CONJ.BRAZO DCH.MINIVID (D/16)
64000275	DISCO CONCAVO MUESCADO MAXI/MINIDISC 20" 6mm.	77105955	CONJ.BRAZO CENTRAL IZQD.MINIVID (D/16)
64000709	DISCO CONCAVO MUESCADO GRADA RAP/VIÑA 20" 6mm.	77105956	CONJ.BRAZO CENTRAL DCH.MINIVID (D/16)
77100002	SUSPENSION ELASTICA D=40*200mm.		



# MINIVID MODULE

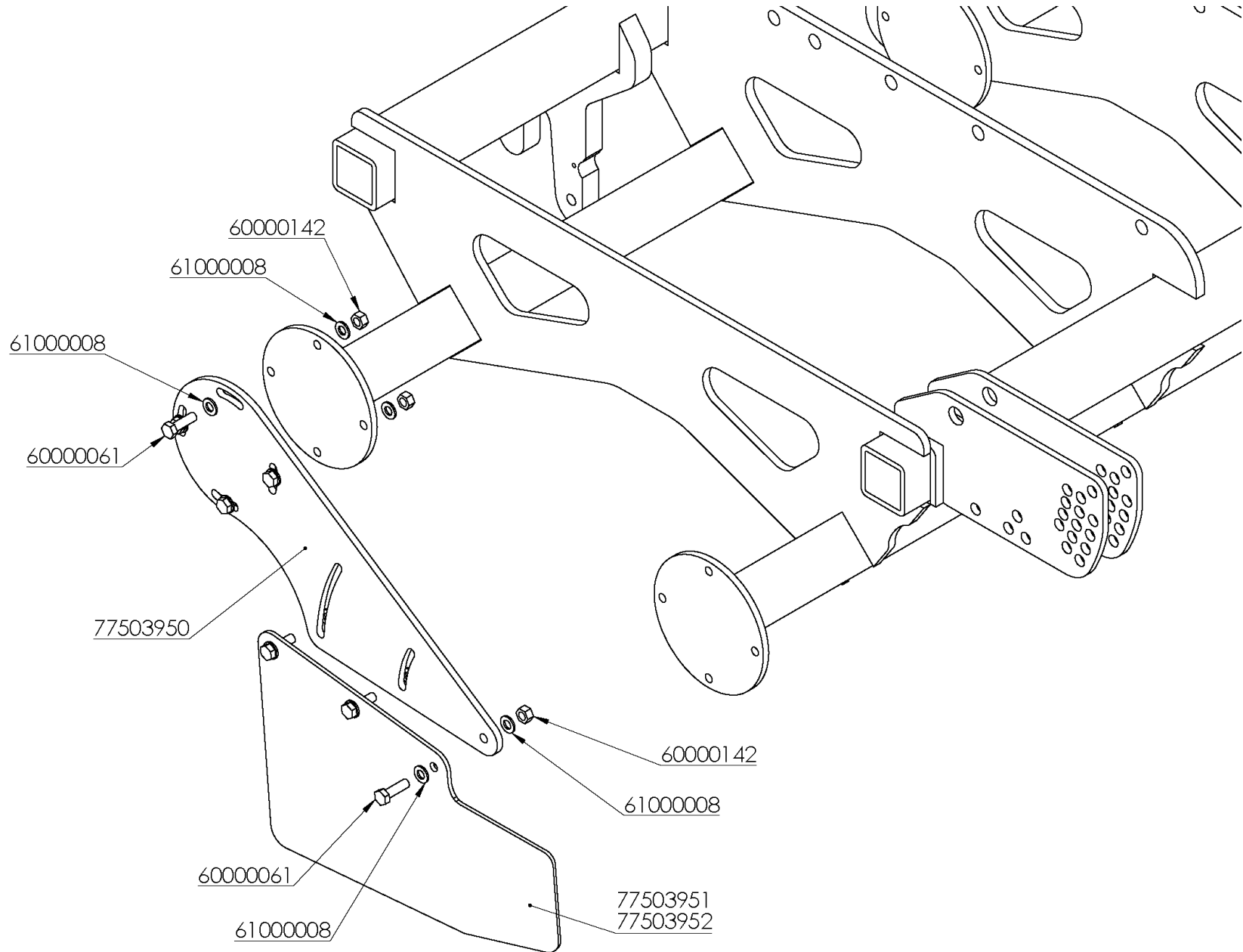


## MINIVID MODULE

REFERENCIA	DESCRIPCIÓN
6000061	TORN.EXAG.DIN-933 12* 40 8.8 ZINC.
60000142	TUER.AUTO.DIN-980 12 8.8 ZINC.
77502950	PAÑO DISCOS MODULO MINIVID



# METALLIC DEFLECTORS ASSEMBLY

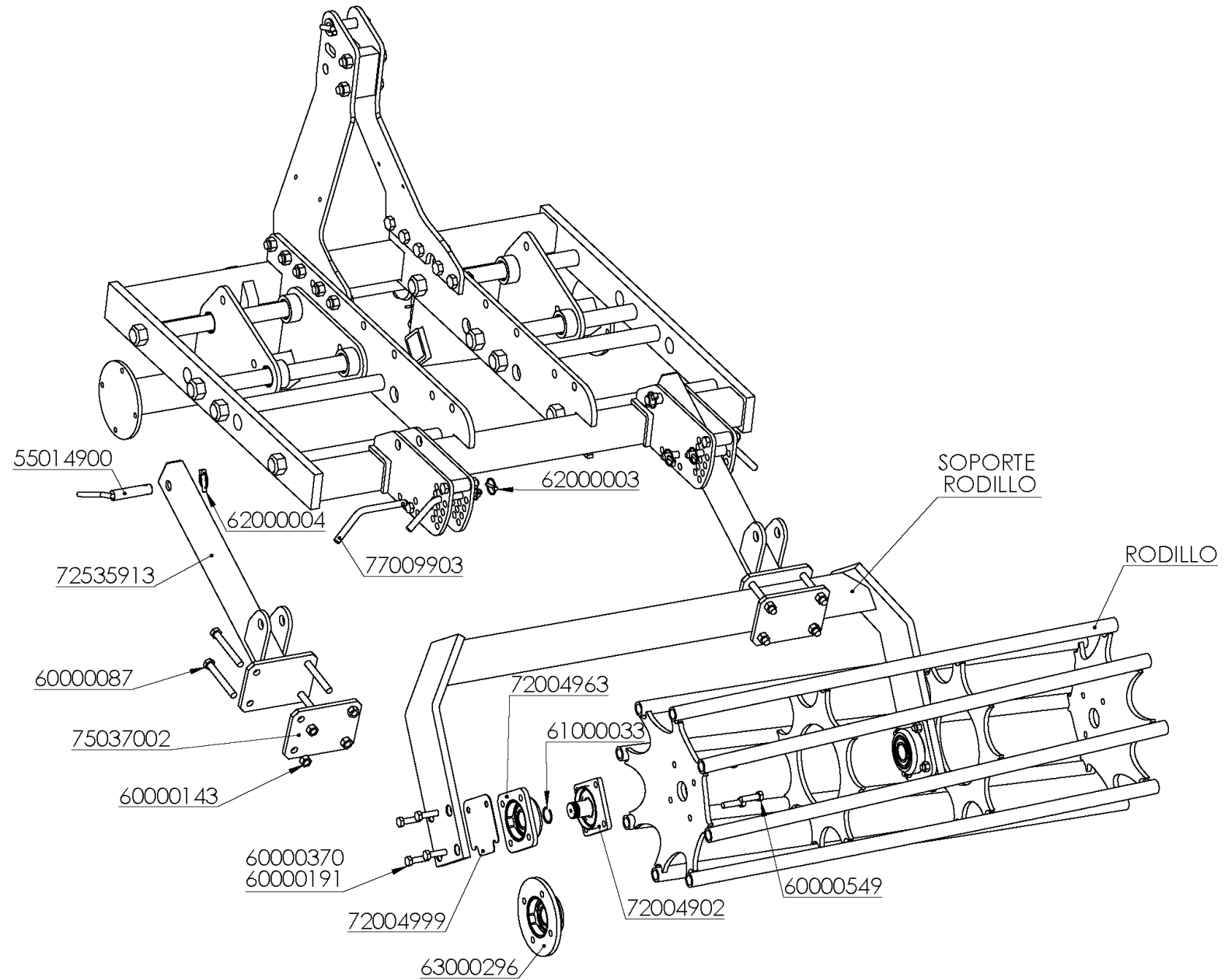


## METALLIC DEFLECTORS ASSEMBLY

REFERENCIA	DESCRIPCIÓN
60000061	TORN.EXAG.DIN-933 12* 40 8.8 ZINC.
60000142	TUER.AUTO.DIN-980 12 8.8 ZINC.
61000008	ARAND.DIN-125 12 ZINC.
77503950	PLACA SOP.FALDON REPTILL
77503951	FALDON METALICO IZQDO.REPTILL
77503952	FALDON METALICO DCHO.REPTILL



# ROLLER ASSEMBLY



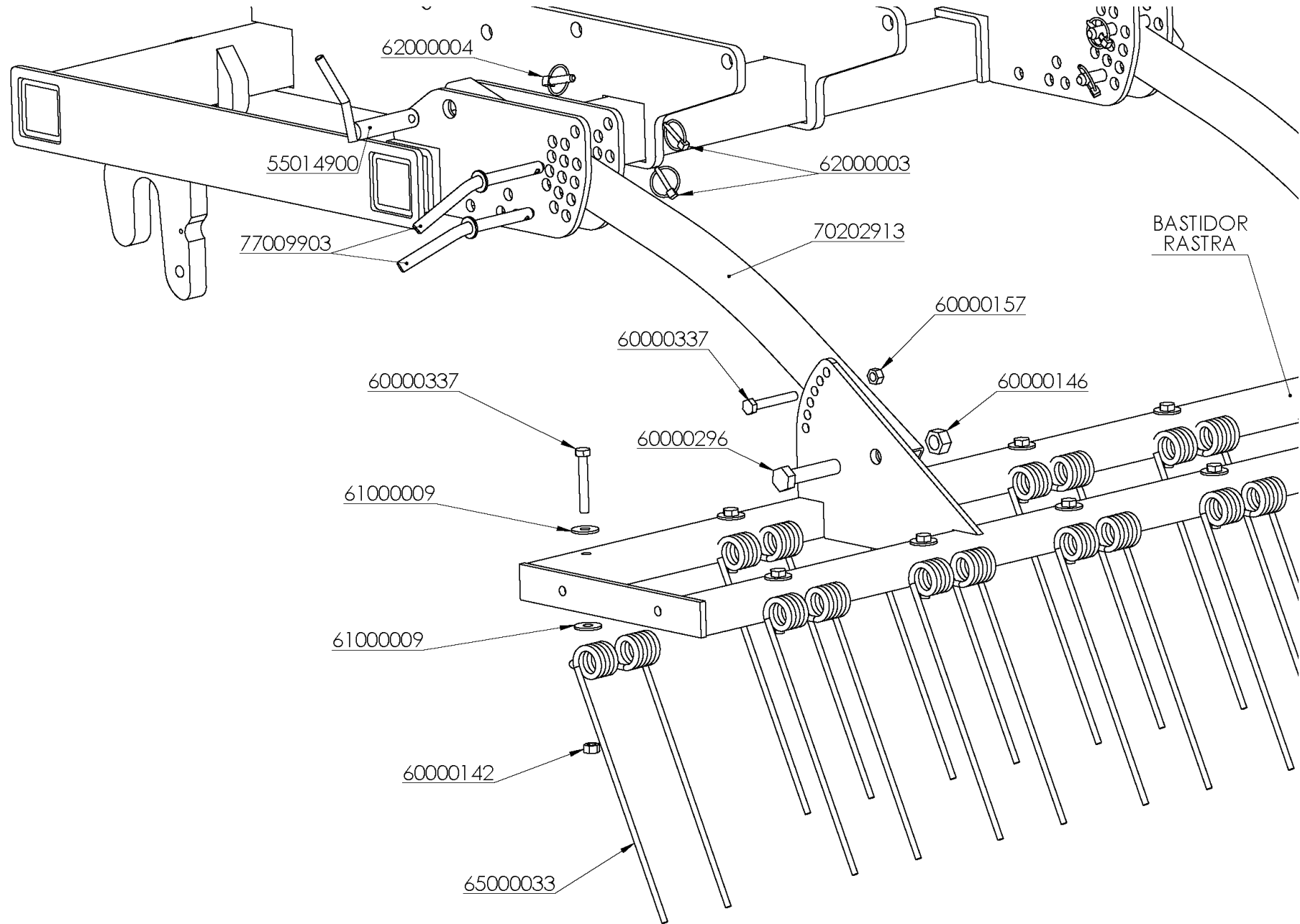


## ROLLER ASSEMBLY

REFERENCIA	DESCRIPCIÓN
55014900	BULON D=25*110mm.BLOQUEO/BRAZO RODILLO
60000087	TORN.EXAG.DIN-931 16*130 8.8 ZINC.
60000143	TUER.AUTO.DIN-980 16 8.8 ZINC.
60000191	TORN.EXAG.DIN-933 14* 30 8.8 ZINC.
60000370	TORN.EXAG.DIN-933 14* 35 8.8 ZINC.
60000549	TORN.EXAG.DIN-933 14*25 8.8
61000033	ANILLO ELASTICO DIN-471 40
62000003	PASADOR ANILLA 6 ZINC.
62000004	PASADOR ANILLA 10 ZINC.
63000296	RODAMIENTO C/BRIDA REDONDO (D/20)
72004902	EJE RODILLO CIERRE ESFERICO
72004963	RODAMIENTO C/BRIDA CUADRADO (D/18)
72004999	CALZO BUJE RODILLO
72535913	BRAZO SOP.ROD.MINIVID
75037002	PLACA AMARRE RODILLO
77009903	BULON D=16*235mm.REG.RODILLO MCH



# TINE ASSEMBLY

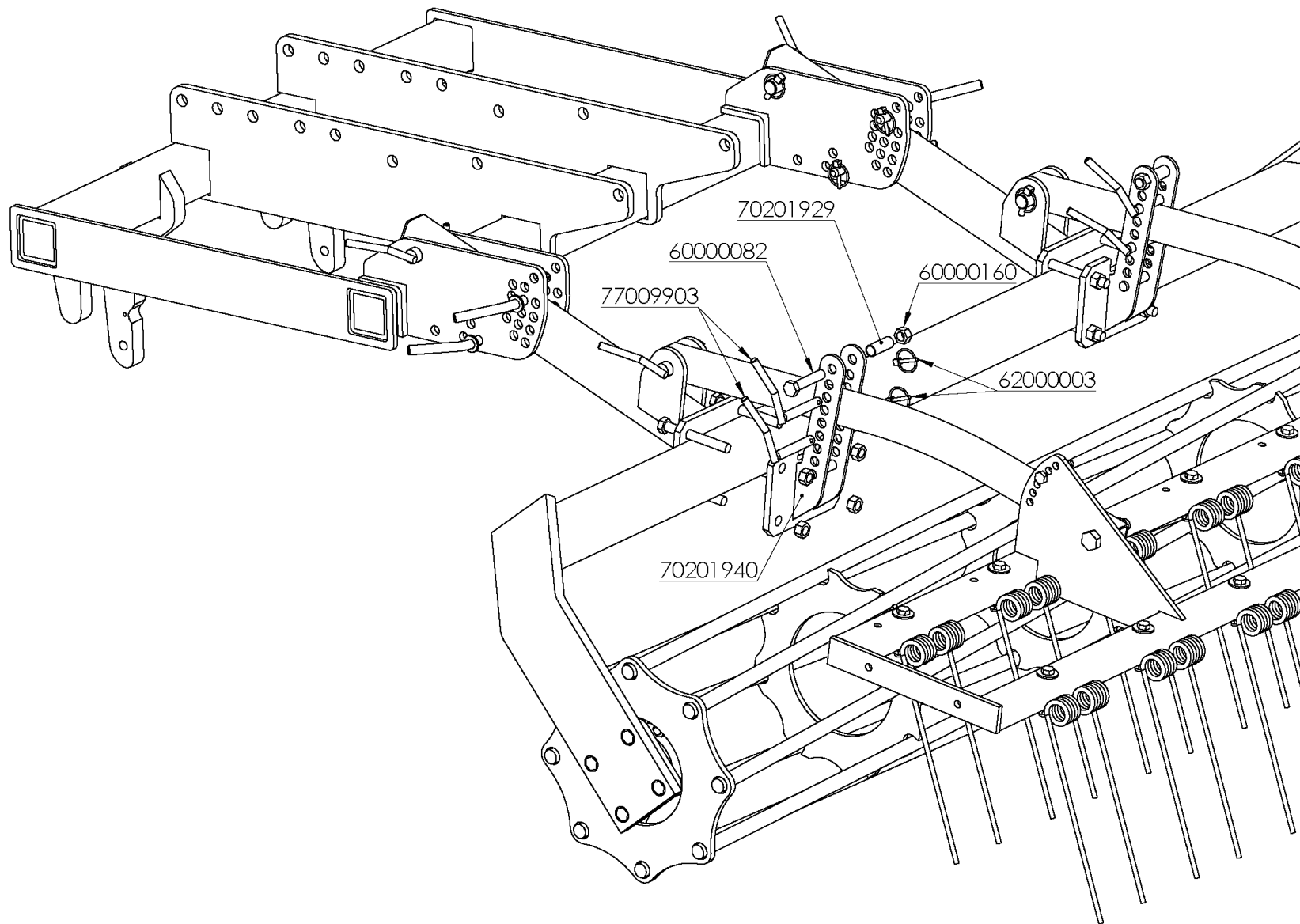


## TINE ASSEMBLY

REFERENCIA	DESCRIPCIÓN
55014900	BULON D=25*110mm.BLOQUEO/BRAZO RODILLO
60000142	TUER.AUTO.DIN-980 12 8.8 ZINC.
60000146	TUER.AUTO.DIN-980 20 10.9 ZINC.
60000157	TUER.EXAG.DIN-934 12 8.8 ZINC
60000296	TORN.EXAG.DIN-931 20* 90 8.8 ZINC.
60000337	TORN.EXAG.DIN-931 12* 80 8.8 ZINC.
61000009	ARAND.DIN-9021 12 ZINC.
62000003	PASADOR ANILLA 6 ZINC.
62000004	PASADOR ANILLA 10 ZINC.
65000033	MUELLE RASTRA D=10*400mm. ROJO RAL-3001
70202913	BRAZO RASTRA MCH (D/09)
77009903	BULON D=16*235mm.REG.RODILLO MCH



# TINE AND ROLLER ASSEMBLY



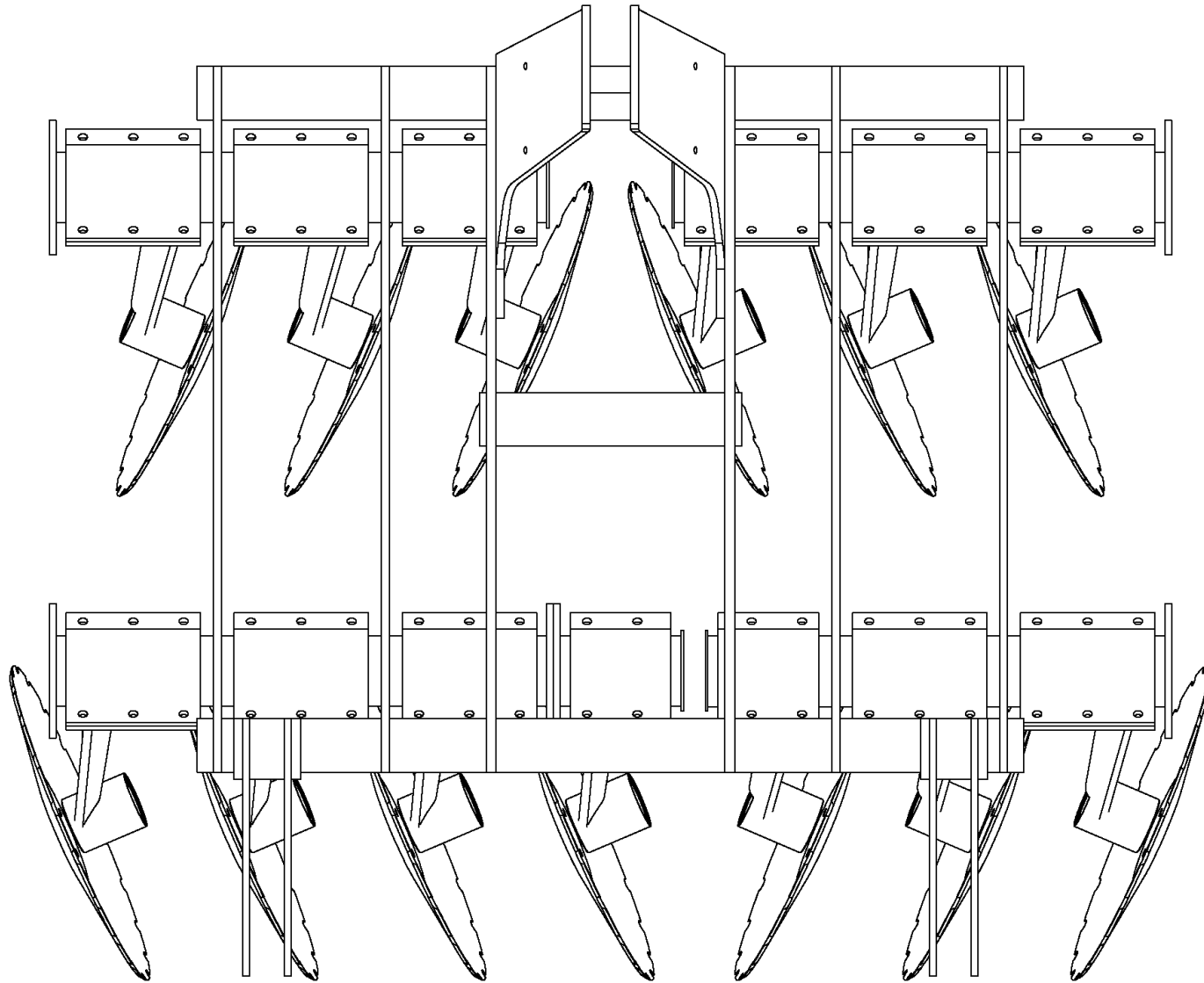
## TINE AND ROLLER ASSEMBLY

	DESCRIPCIÓN
60000082	TORN.EXAG.DIN-931 16* 80 8.8
60000160	TUER.EXAG.DIN-934 16 8.8 ZINC.
62000003	PASADOR ANILLA 6 ZINC.
70201929	SEP.TUBO 20*52
70201940	SOP.REGUL.BAST.RASTRA MCHV
77009903	BULON REG.RODILLO MCH

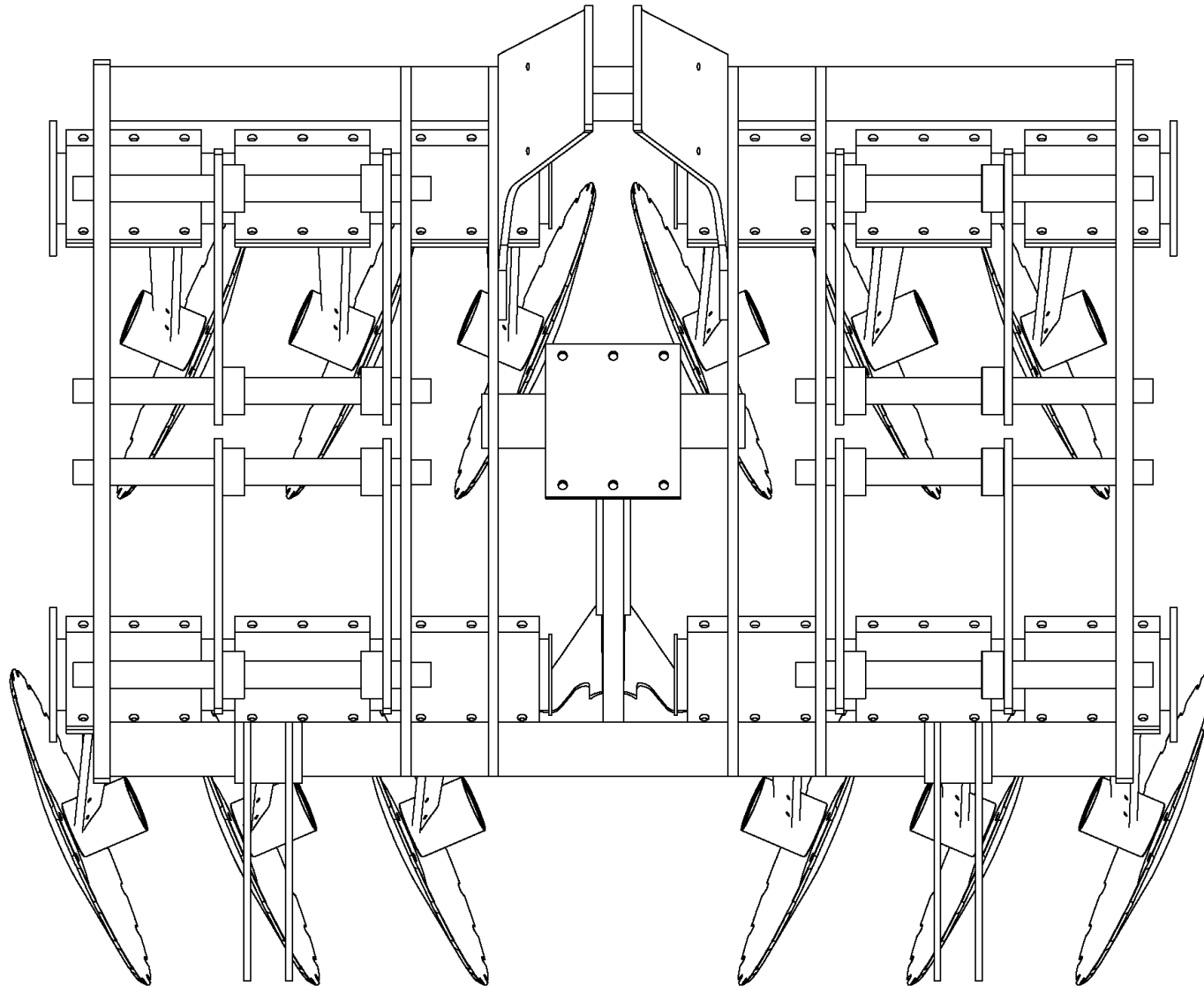
REFERENCIA	DESCRIPCIÓN
70210780	BAST.RASTRA MCHV 2,15 (D/09)
70210781	BAST.RASTRA MCHV 1,60 (D/09)
70210782	BAST.RASTRA MCHV 1,30 (D/09)
70210783	BAST.RASTRA MCHV 1,60-IC (D/09)
70210784	BAST.RASTRA MCHV 1,30-IC (D/09)
70210785	BAST.RASTRA MINIVID 2,95
70210786	BAST.RASTRA MINIVID 2,45



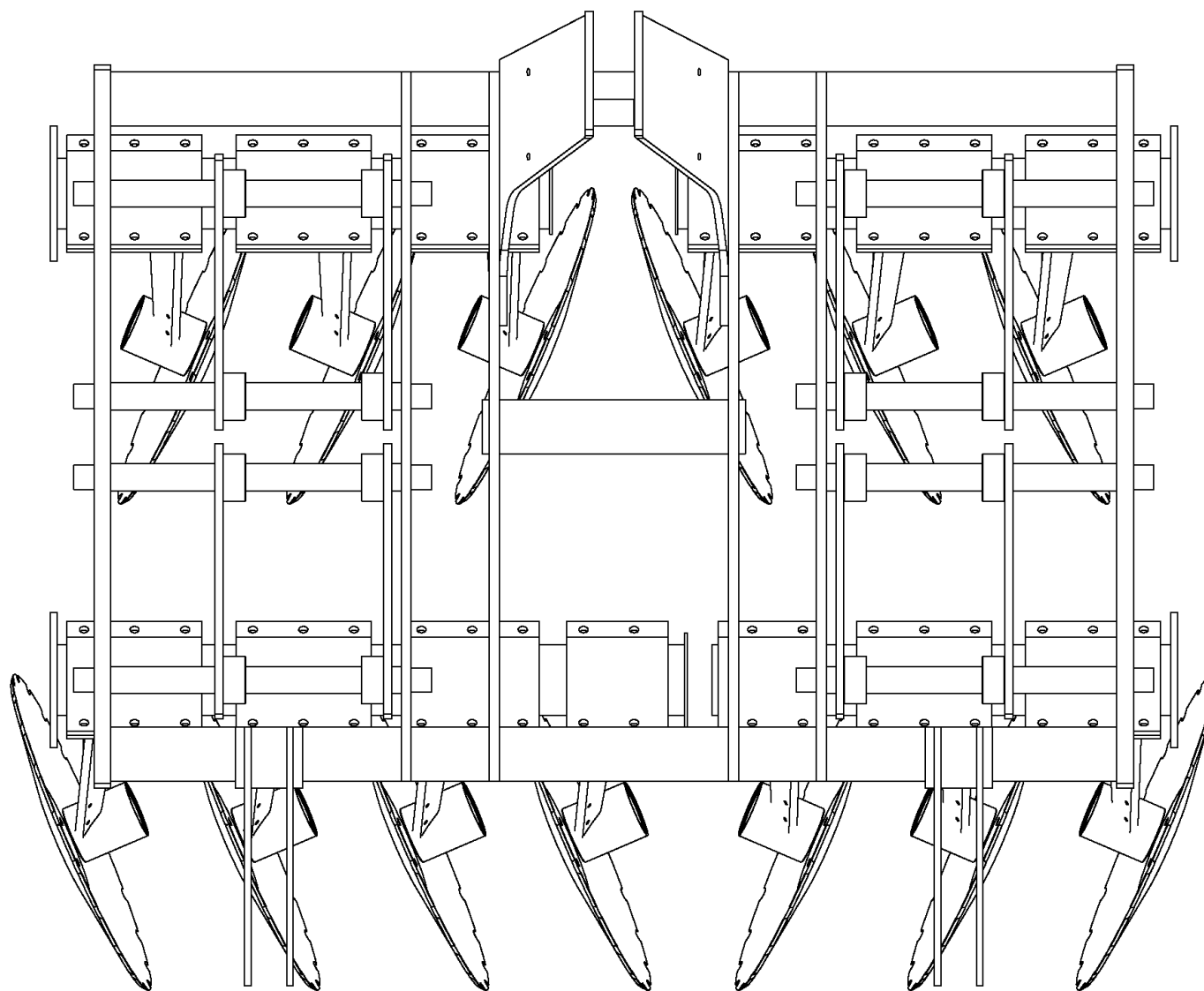
# ASSEMBLY MINIVID 12-25 FIX



# ASSEMBLY MINIVID 12-25 (+ARM)

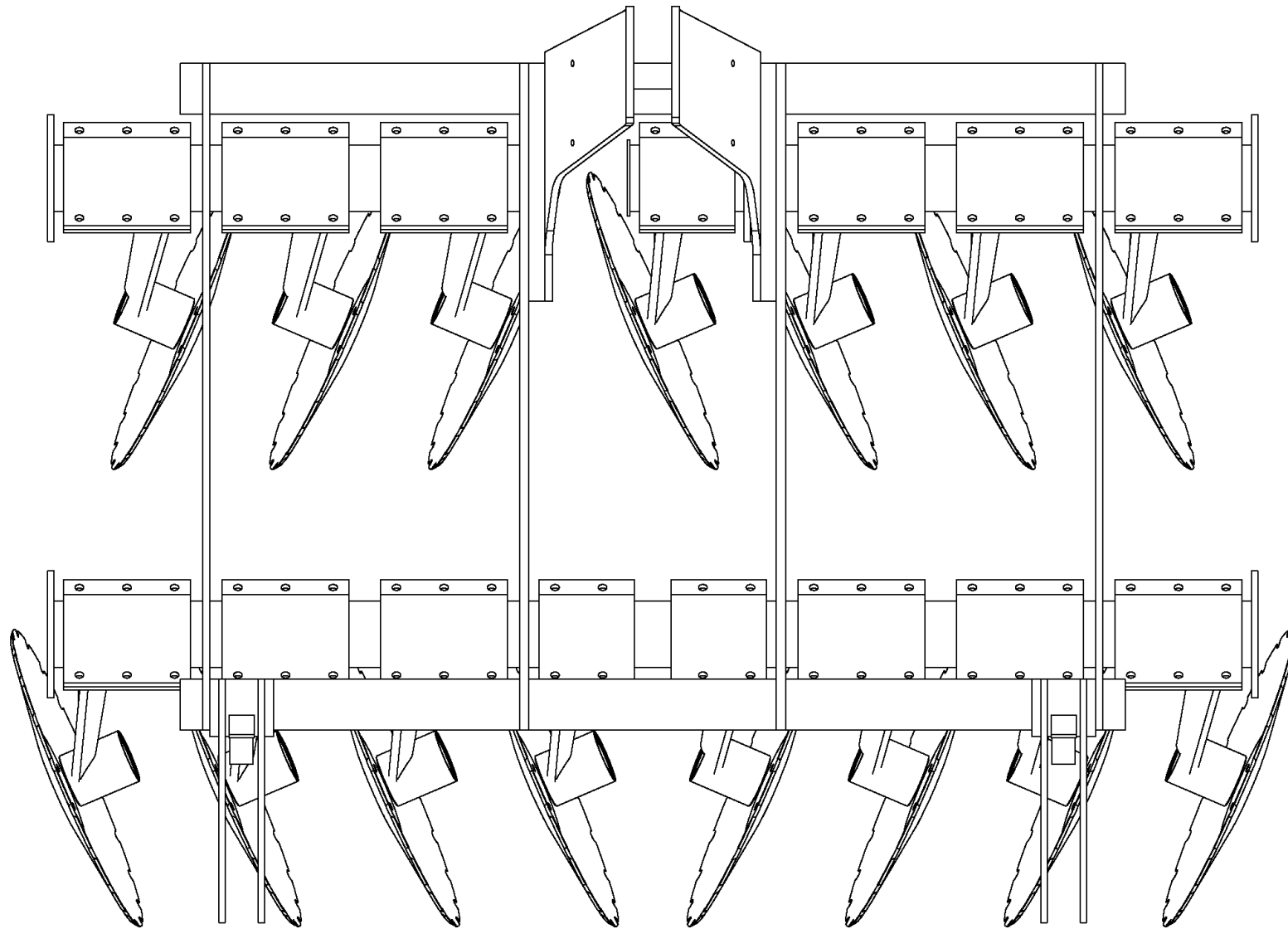


# ASSEMBLY MINIVID 12-25 (+DISC)

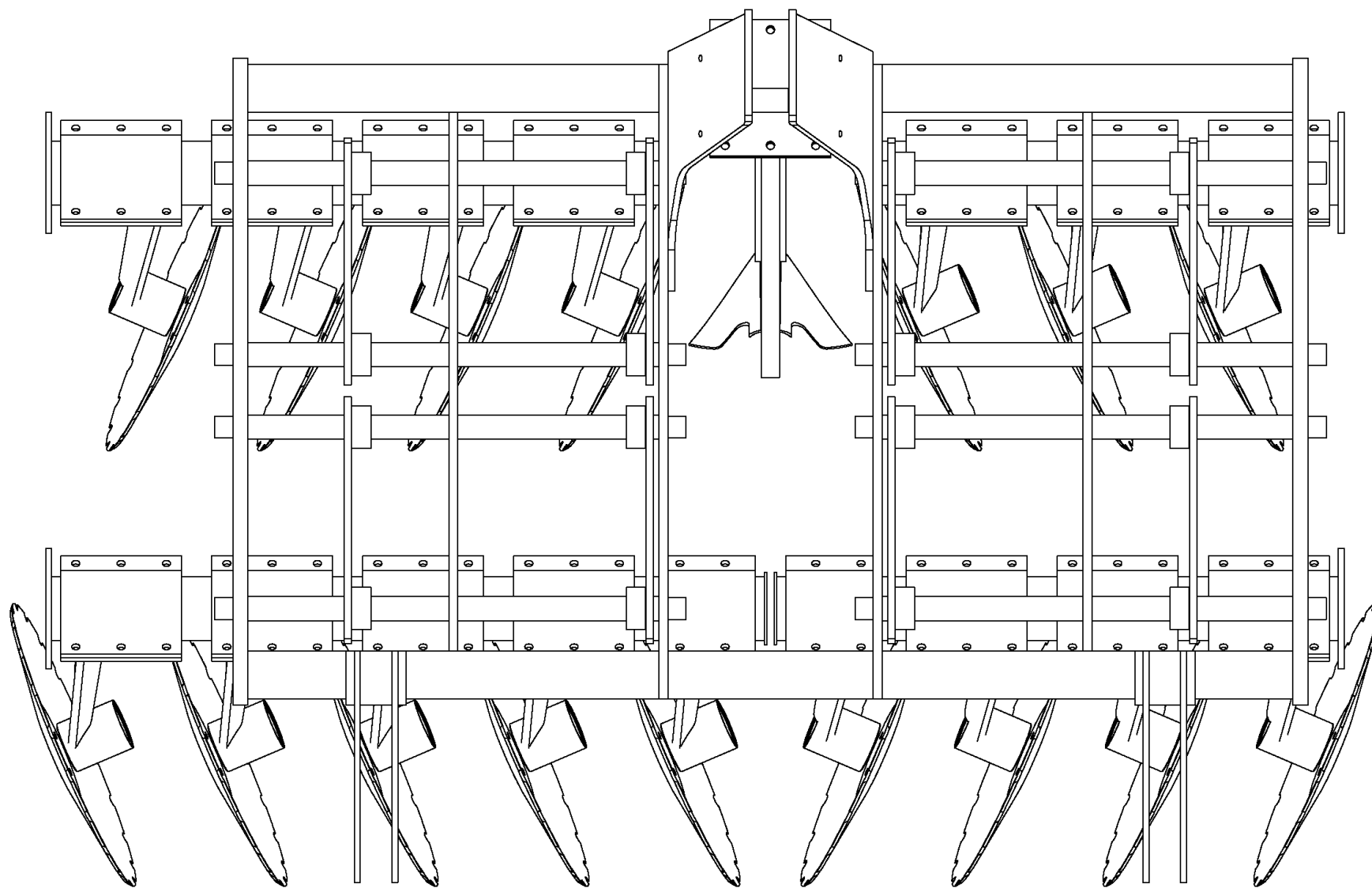




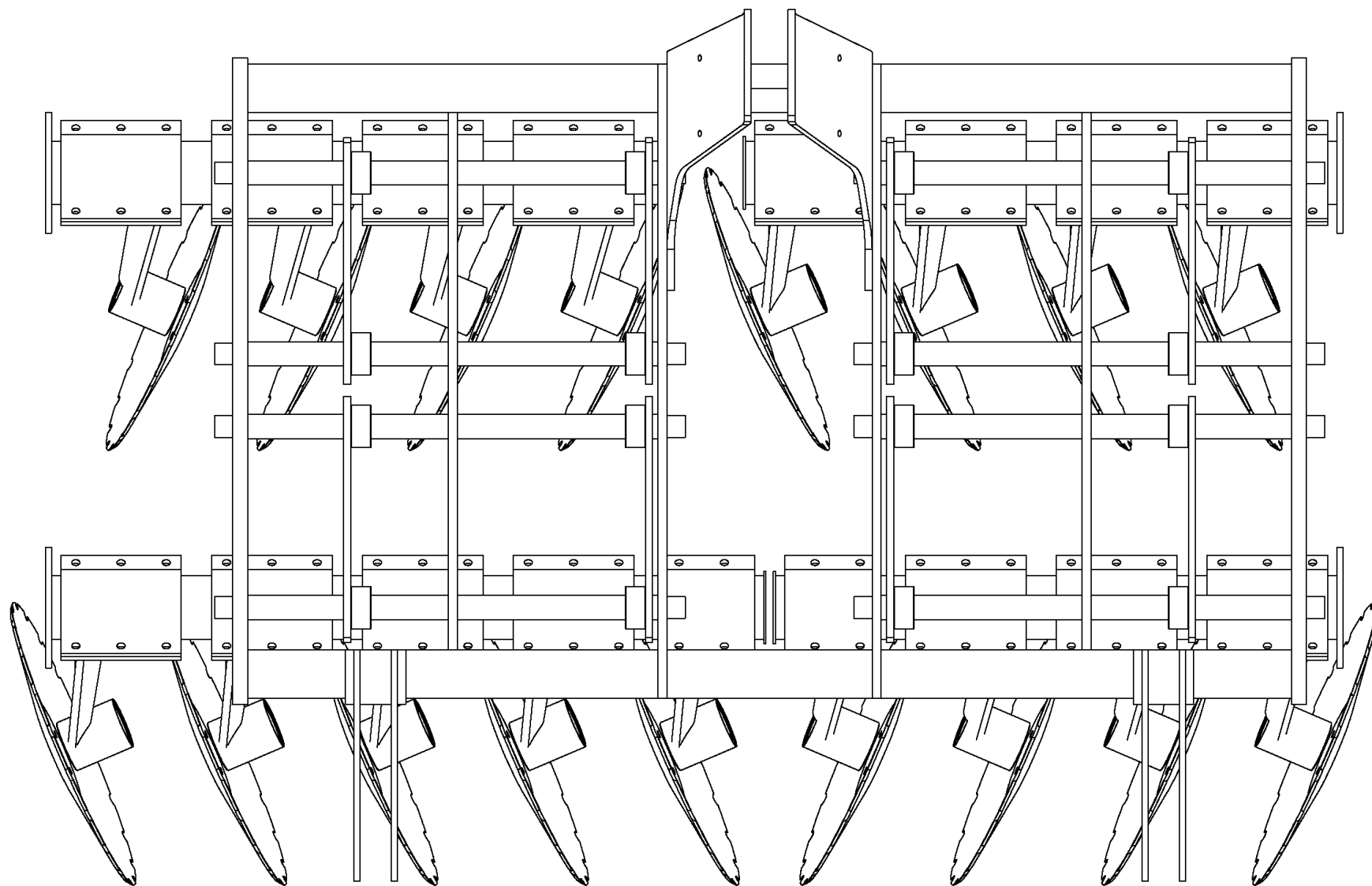
# ASSEMBLY MINIVID 14-25 FIX



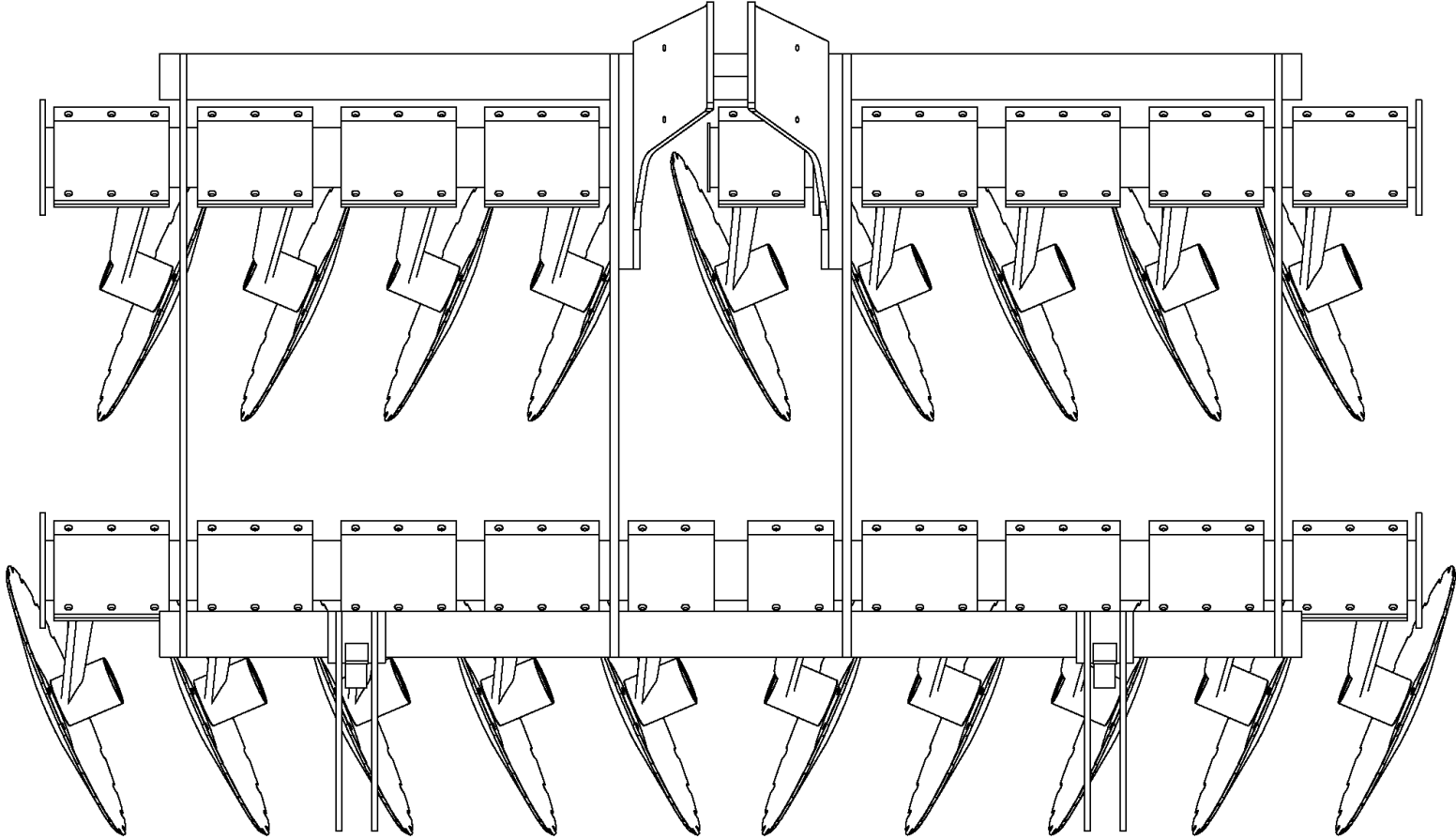
# ASSEMBLY MINIVID 16-25 (+ARM)



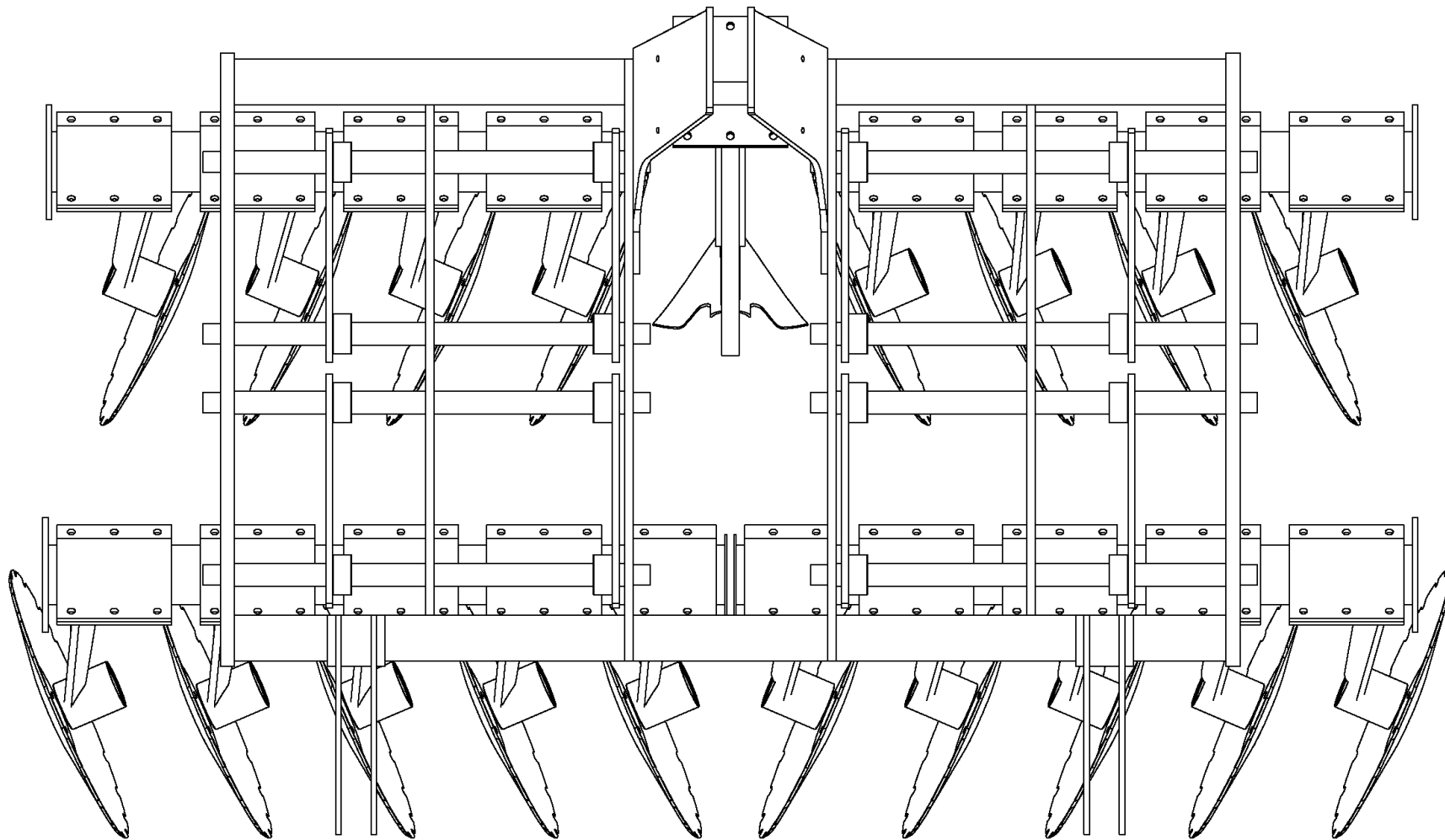
# ASSEMBLY MINIVID 16-25 (+DISC)



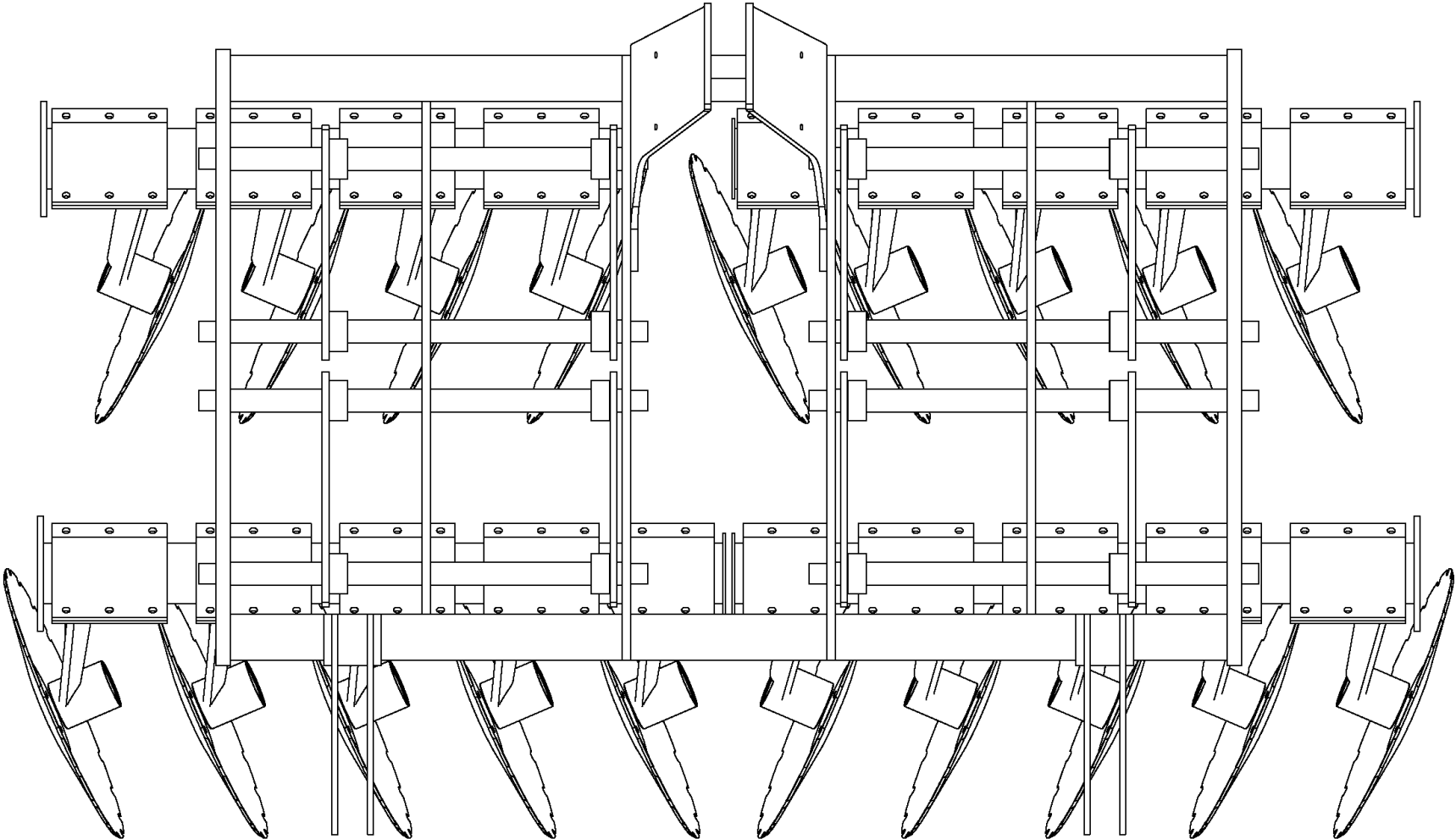
ASSEMBLY MINIVID 18-25 FIX



# ASSEMBLY MINIVID 18-25 (+ARM)



ASSEMBLY MINIVID 18-25 (+DISC)







Polígono Industrial, C/ TAF, P163  
34200 - Venta de Baños  
Palencia - España



+34 979 76 10 11



[comercial@ovlac.com](mailto:comercial@ovlac.com)



[www.ovlac.com](http://www.ovlac.com)