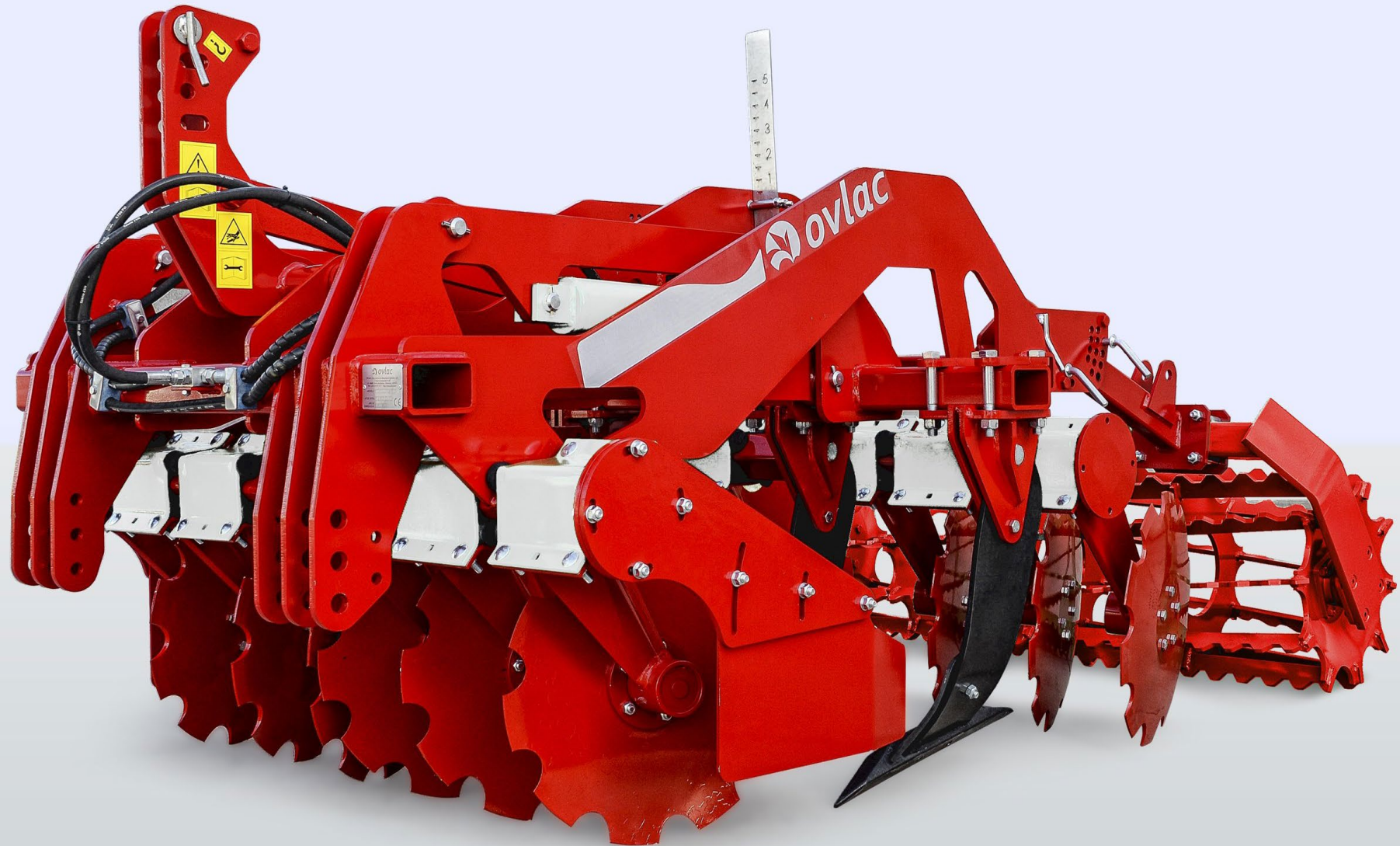


REPTILL

REV 2022



INSTRUCTIONS MANUAL AND SPARE PARTS LIST



CONGRATULATIONS!

You have just acquired **Ovlac** machinery!

As the country's largest producer of agricultural machinery for soil tillage, we are honoured that you have chosen **Ovlac** as your trusted choice.

After many years of experience in the field, we make sure that you will be proud of your purchase in the same way that we are proud of the product we have created under the strictest quality standards.

For the correct use and enjoyment of this equipment, we strongly recommend that the customer read the instructions contained in this manual and use it as a reference for any questions that may arise regarding the operation of your **Ovlac** equipment.

Sincerely yours: Jorge Calvo
CEO of Ovlac



CONSIDERATIONS

This instruction manual describes the Operating and Maintenance Instructions and Spare Parts for the indicated equipment.

This agricultural equipment, called REPTILL, is designed for tilling the soil, applied to a Tractor with lifting gear and universal threepoint linkage.

The proper functioning of the machine depends on its correct use. It is therefore advisable to read the instructions given in this manual carefully in order to avoid any inconvenience that could impair the proper functioning and durability of the machine.

It is also important to follow the instructions in the manual, as the Manufacturer declines all responsibility for negligence and non-observance of these instructions.

The Manufacturer is at your disposal to guarantee immediate and accurate technical assistance and to provide all that may be necessary for a better functioning and performance of the machine.

The Manufacturer reserves the right to modify the Machine without the need to urgently update this publication.



INDEX

- 1.- Security Rules
- 2.- Description and technical data
- 3.- NON STOP Security System
- 4.- Turn Up
 - 4.1.- Adaptation to the tractor
 - 4.2.- Alignment
 - 4.3.- Other adjustments
- 5.- Working Depth
- 6.- Transport
- 7.- Arms' working depth
- 8.- Maintenance
- 9.- Optional equipment
- 10.- Spare Parts



1.- Security Rules

Read carefully all the instructions for use of the cultivator.

The manufacturer declines all responsibility for any inconvenience caused by NOT observing the Safety and Accident Prevention Regulations described below.

- 1.- Pay attention to the danger and warning symbols shown in this manual and indicated on the equipment.
- 2.- Repairs and adjustments to the equipment must always be carried out with the engine stopped and the tractor locked.
- 3.- It is strictly forbidden to transport people or animals on the equipment.
- 4.- It is strictly forbidden to entrust the driving of the tractor, with the equipment hooked up, to people without a driving license, inexperienced, or who are not in good condition.
- 5.- Scrupulously observe all the accident prevention measures recommended and described in this manual.
- 6.- The application of additional equipment to the tractor implies a different weight distribution on the tractor axles.
- 7.- Before putting the tractor and the equipment into operation, check that all the safety elements for transport and use are in perfect condition.
- 8.- The symbols with warnings displayed on the equipment give the appropriate suggestions for the use of the same.
- 9.- To circulate on the road, it is necessary to observe the rules of circulation according to the country where it's operated.
- 10.- Respect the maximum weight foreseen on the tractor, the total mobile weight, the transport regulations and the road code.
- 11.- Before starting to work, familiarise yourself with the control devices.
- 12.- Pay the utmost attention to hitching and unhitching the equipment.
- 13.- Never leave the driving position when the tractor is in motion.
- 14.- Remember that road adherence, steering and braking capacity may vary significantly due to the presence of suspended equipment.
- 15.- It is strictly forbidden to remain in the area of action of the equipment.
- 16.- Before leaving the tractor, lower the suspended equipment, stop the engine, apply the parking brake, and remove the ignition key from the dashboard.
- 17.- The category of the hitch pins of the equipment must correspond to that of the linkage of the lift.
- 18.- Pay maximum attention when working in the area of the arms of the tractor, it is a very dangerous area.
- 19.- It is strictly forbidden to stand between the tractor and the equipment to manoeuvre the external lifting control.
- 20.- During road transport with the equipment suspended, put the control lever of the hydraulic lift in the locking position.
- 21.- The spare parts must correspond to the requirements defined by the Manufacturer. Always use original spare parts.
- 22.- The safety instruction decals must always be clearly visible. Clean and replace them if they are not legible (You can ask your dealer for them).
- 23.- The instruction manual must be kept for the whole life of the equipment.



WARNING

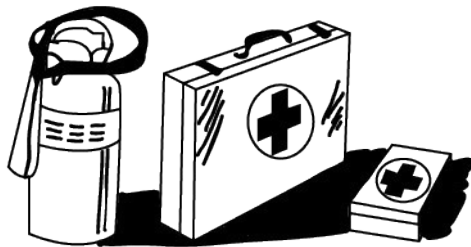
Before starting to work, read the instructions in the manual.

DANGER

Do not handle the equipment when it is suspended, danger of crushing. Maintain the safety distance.

DANGER

Lifting the equipment can cause injuries due to reaching. Maintain the safety distance.



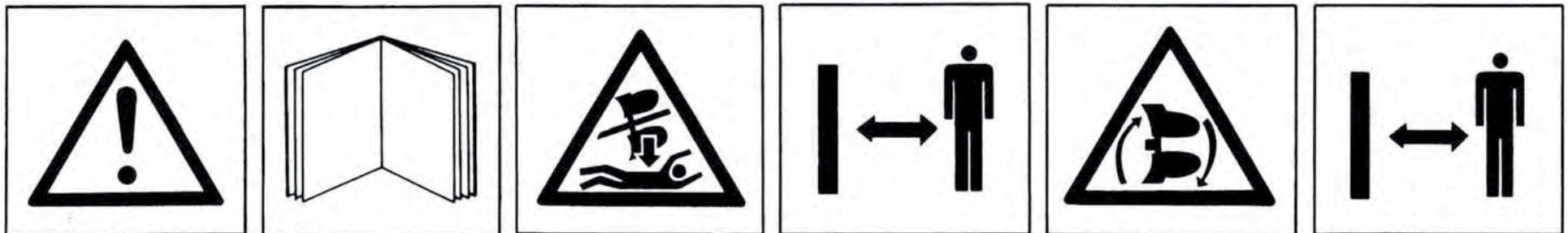
To be ready in case of an emergency

Keep a first aid kit and fire extinguisher on hand. Write down the telephone numbers of doctors, ambulance and fire brigade and keep them near the phone.

Use adequate clothes

Avoid loose clothing and use appropriate safety equipment depending on the type of work. Safe operation of the machine requires the full attention of the operator.

Don't use headphones for listening to the radio while working with the machine.



SPECIFIC INSTRUCTIONS FOR WELDING REPAIRS

When repair by welding is authorised by the manufacturer, the following points shall be taken into account generally. In particular cases, appropriate welding instructions shall be provided for each application.

- 1** Repair welding should be carried out by qualified welders and in accordance with good technical and safety code practice.
- 2** Before welding repairs, remove paint, rust, dirt or any other substances harmful to the weld.
- 3** To avoid damage to mechanical or hydraulic components such as bearings, shafts, hydraulic actuators, hydraulic systems, etc., care should be taken to place the earth connection in an area of good contact, free of paint and rust.
On machines with hydraulic cylinders, we must ensure that the welding current does not flow through such elements. For this purpose, the earth connection shall be placed on the same part of the machine to be repaired.

4 Our machines are made of high elastic limit (HEL) steels, which means that special attention must be paid to welding processes and filler materials. In general, basic coated electrodes E7016 or E7018 will be used. For the MAG (semi-automatic) welding process, ER70S6 wire and Ar+20CO₂ will be used as shielding gas. In both cases, follow the recommendations for drying times and temperatures recommended by the manufacturers of the filler material.

5 When the parts to be welded are thicker than 15 mm, or the ambient temperature is lower than 15 C, preheating by flame between 75-100 C is recommended.

6 It is strictly forbidden to cool welding seams with water, air or any other substance.
In case of questions during repair, please contact the manufacturer via the usual means of communication.

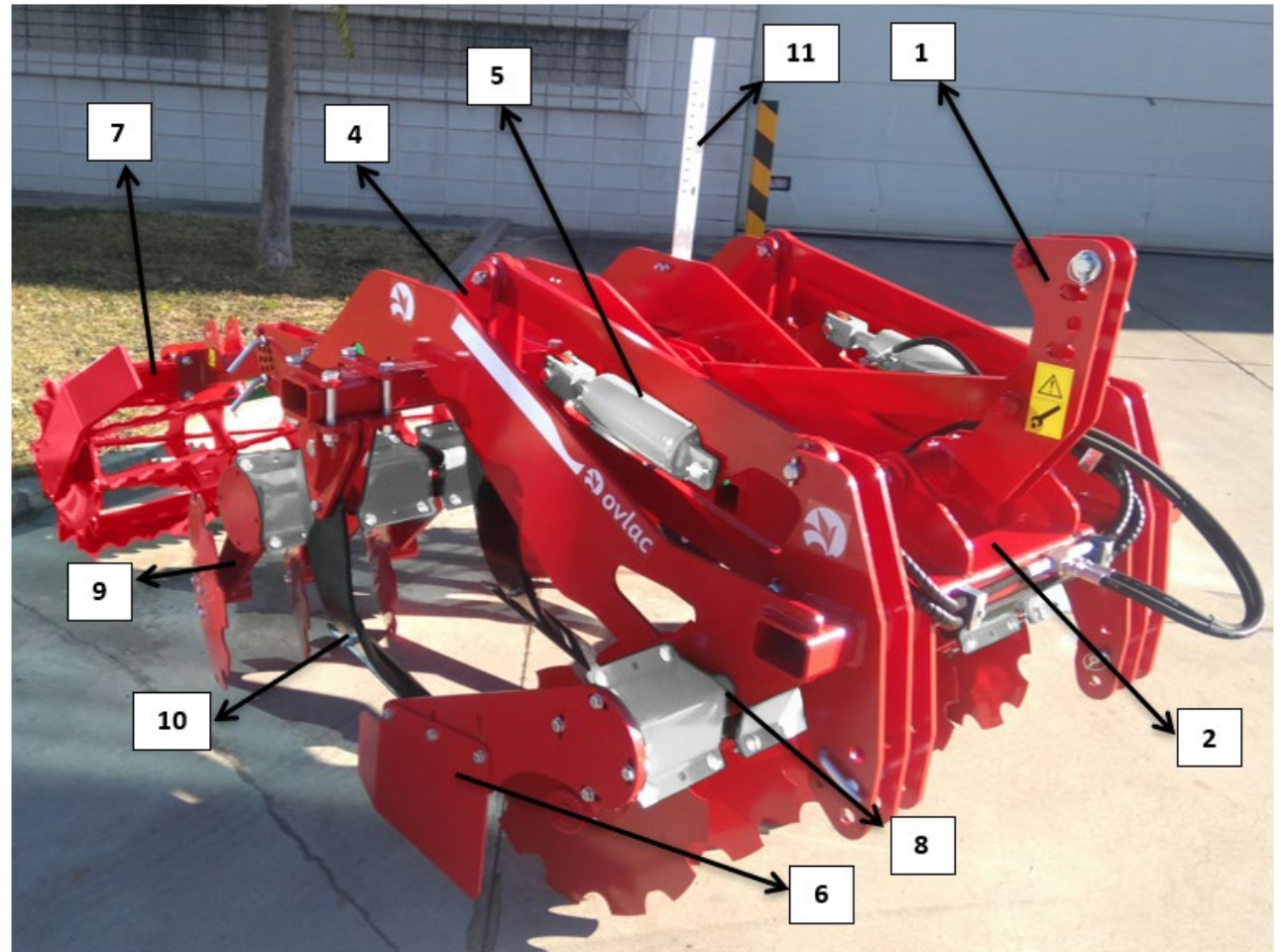


2.- Description and Technical Data

1. HEADSTOCK
2. FRAME
3. IDENTIFICATION PLATE*
4. SET OF CYLINDERS
5. HYDRAULIC SYSTEM CYLINDERS DISPLAY
6. SIDEPLATES
7. SET OF ROLLERS
8. SECURITY SYSTEM
9. MINIVID BODY SET
10. MICHEL BODY SET
11. DEPTH RULE

Note: the number of the plough's manufacture, engraved on the nameplate, must match the number engraved on the headstock's support.

*2. Identification plate



Technical Data

MODELS	REPTILL-8/2	REPTILL-10/2	REPTILL-12/4	REPTILL-14/4	REPTILL-16/4
Working Width	1,05	1,40	1,65	1,90	2,15
Transport Width	1,11	1,46	1,71	1,96	2,21
Recommended Power (CV)	80/90	90/100	100/110	110/130	120/150
Distance between discs (cm)	13 cm				
Distance between rows (cm)	122 cm				
Discs 'Angle	23° in advance / 5,6° of inclination				
Security	40 mm rubber				
Discs	8	10	12	14	16
Weight (with cage roller)	980	1.100	1.220	1.280	1.345



3.- Non-Stop Security Systems

“Non-Stop” rubber security systems act automatically (leafspring/ rubber). When the share it’s facing an obstacle, the systems gives up, allowing the arm to elevate and dodge, getting back to its original position without stopping the tractor.

This way, every impact caued by uneven terrain will be absorbed by the security system, which protects the elements of the machine, and therefore, also the tractor.

For the same reason, “Non-Stop” security systems decrease the traction effort by avoiding the tractor to face all the obstacles by itself.

Note: OVLAC Non-Stop Security Systems are factory-regulated with an optimum pressure for mid-hardness terrains.

Rubber-shock absorbers

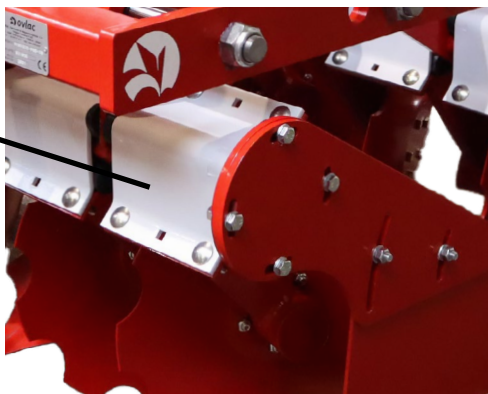


Fig. 1

4.- Turn Up

4.1 - Adaptation to the tractor

OVLAC's Reptill is designed to adapt to the 3 universal linking points of any tractor.

Before linking the Reptill check that:

- The tractor arms are regulated at the same length and height.
- Tractor wheels must have the same pressure and according to the rules of the manufacturer.
- The tractor arms must be centered with a slight margin for oscillating.



4.2 - Alignment

The cultivator must work aligned with the tractor, if not, the plough will tend to abandon the working direction. Must check that the distance $A1=A2$ (Fig. 2).

The arm of the 3rd point must be coupled in a way that the end that links over the plough remains slightly higher than the end that links into the tractor (Fig. 3).

The 3rd point must couple over the torn drill E (Fig.3) when the terrain is not uniform or uneven, making sure its length allow free moves while working (except in tractors with control on the 3rd point).

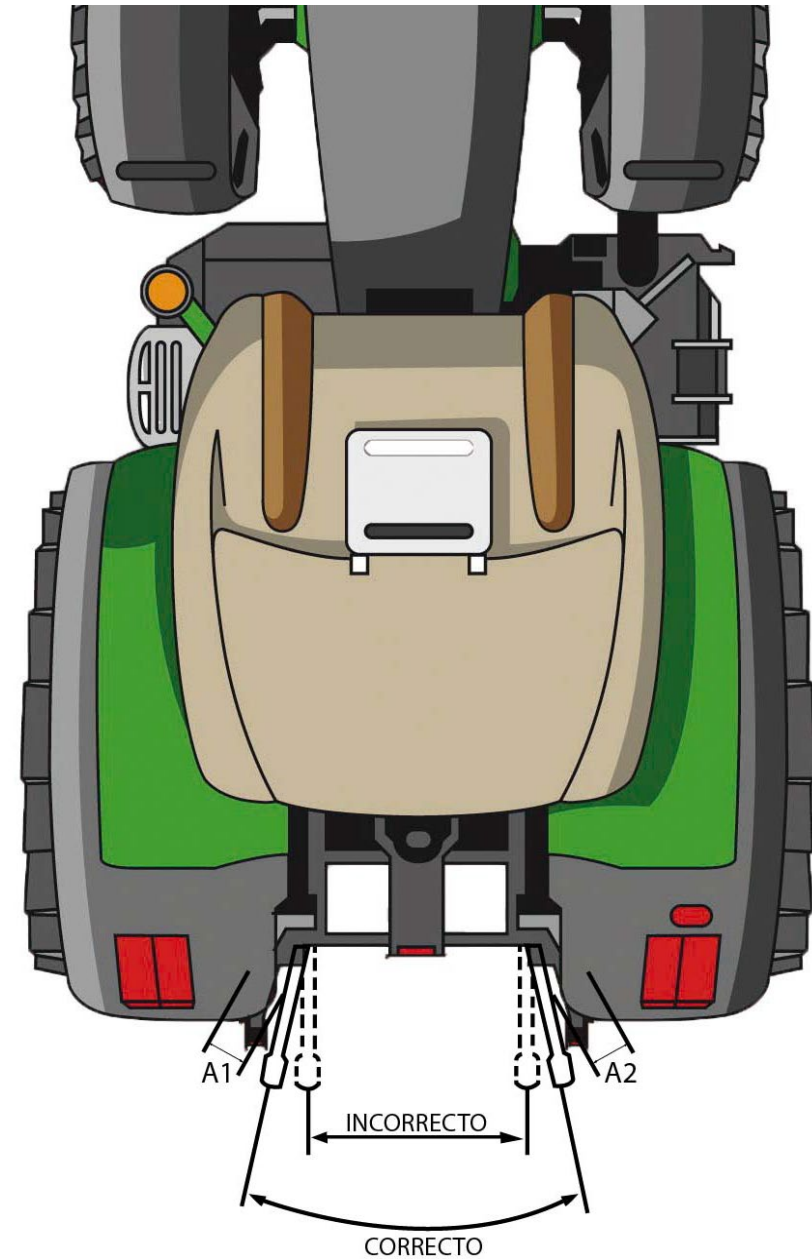


Fig. 2

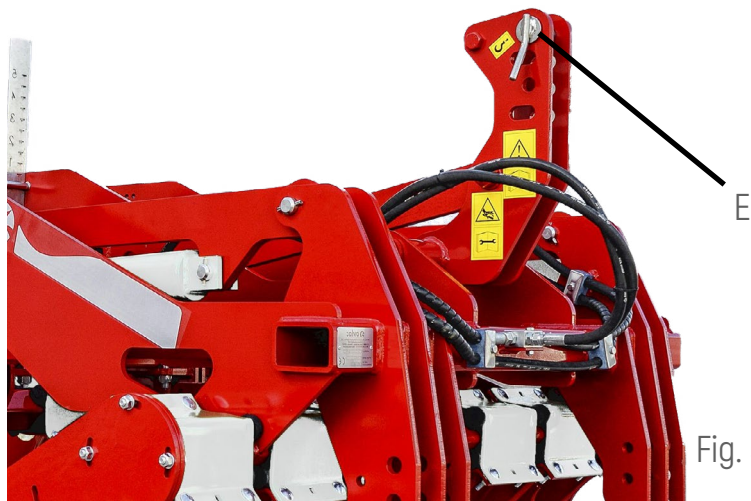


Fig. 3

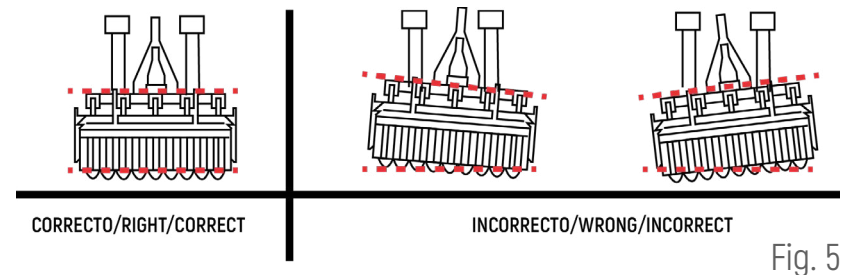
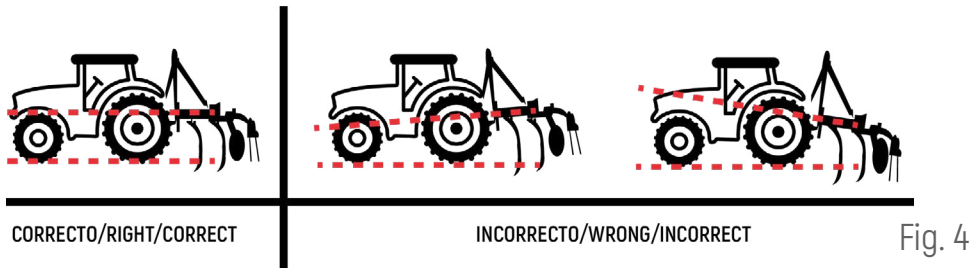


4.3 - Other adjustments

The length of the 3rd point must be adjusted in a way that the frame adopts a parallel position to the ground, if not, the rows of arms will work at uneven depths, causing a wrong labor. (Fig. 4)

For the same reason, is necessary for the tractor arms to be found at the same height, so the machine works at the same depth in its whole width (Fig. 5) and side triggers doesn't happen, so the tractor doesn't find it hard to keep its path. (Fig. 5)

IMPORTANT: Must try not totake curves while working, specially with very heavy machinery, since the pulling effort may cause severe damage to the machine's structure.



5.- Working depth

The Working depth is regulated through the standard roller and its regulation bolts A (Fig.6).

In no case the working depth will be such that the discs bushings are not at an adequate distance from the ground, so this never get to touch the ground.

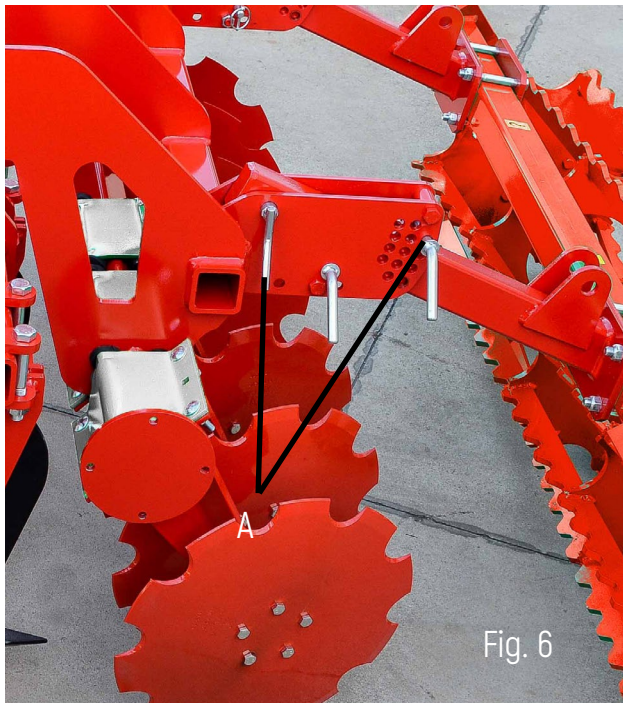


Fig. 6

6.- Transport

In the machines with hydraulic adjustment of the discs row' width (Minivid Pro), this will be retracted in order to ease its transport, leaving the machine on its minimum width.

7.- Arms' Working Depth

The arms' working depth is regulated through a paralelogram system of hydraulic activation controlled through the cylinders B (Fig.8).

Said working depth can be consulted at any moment on the rule C (Fig.8), visible from the tractor.

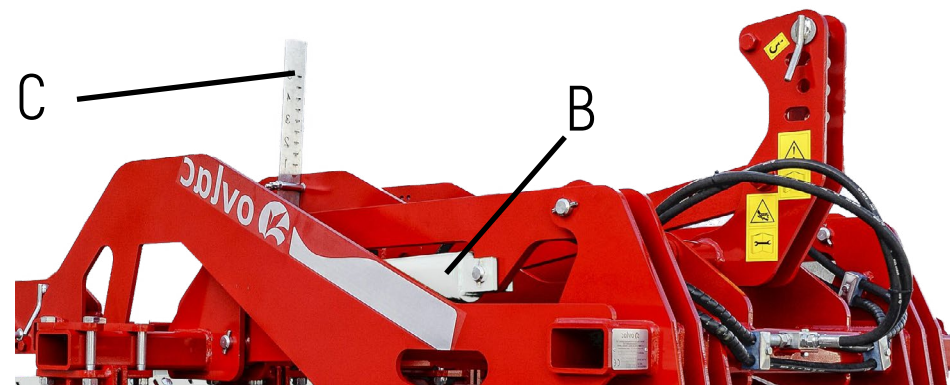


Fig. 7



8.- Maintenance

Must check how tighten the bolts are after the first 2 hours of labor, specially the ones on the bodies and shares. Afterwards, check every 100 hours of labor. When finishing the campaign, wash the plough and grease the bodies to avoid rust.

Lube: Greasing points must be greased up regularly.

Safe maintenance

Get familiar with the maintenance procedures before doing any labor. The working area must be clean and dry. Not doing any greasing labor, repair or adjustment while the engine is running. Keep the hands, feet, and clothes always far from the moving components. Place all the hydraulic controls on neutral-gear in order to relieve pressure. Lower all gear to the ground.

All the components must be in good shape and correctly installed. Repair damage immediately. Change any wasted or broken piece. Keep all the components of the machine clean off of grease, oil and accumulated dirt. By dealing with trailed equipment, disconnecting the group of cables from the tractor before doing any welding on the machine.



Watch out for the high pressure leaks

Leaking fluids from the system might leak strong enough to tear flesh, causing severe injuries. Therefore, is indispensable to leave the system pressure-less before loosing or disconnecting any pipe and assure that all the connections and connectors are well-tighten before applying pressure to the system. In order to locate an hydraulic oil leak use a piece of cardboard placed in between the connections. Don't get near high-pressure leakings. Even if after all this measures an accident happens, go immediately to see a doctor, who should remove the fluid surgically in a few hours in order to avoid gangrene. Unexperienced doctors with injuries of such nature may go to a specialized medical center.

Maintenance of hydraulic cylinders. **IMPORTANT:** keep the plugs clean. Abrasive particles, such as sand, metal sharps, may damage the cylinders, causing inner leaks. Once unplugged off the tractor, place the protection bolts and make sure they're not touching the ground.



9.- Optional equipement

Ovlac' REPTILL machines (fixed or extensible) can be equipped with:

1. Sideplate (Fig.8)
2. Hydraulic folding headstock (Fig.9)

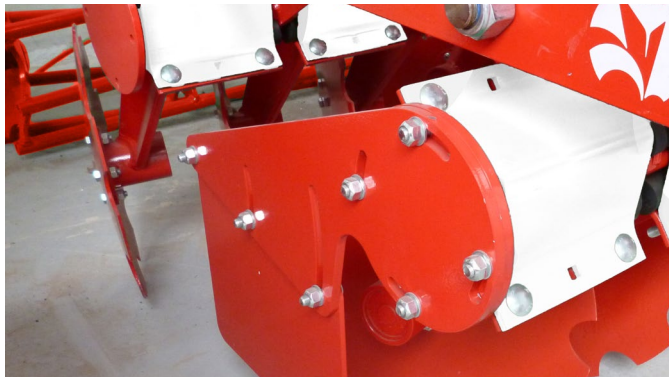


Fig. 8

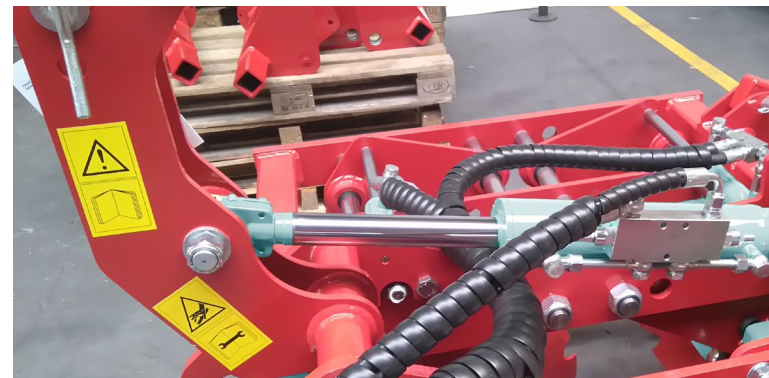


Fig. 9



10.- Spare Parts

Spare parts orders must always be placed through dealers and will include the next indications:

- Type, model and plough's number of manufacturing. This data is indicated on the identification plate of the plough.
- Reference of the piece. Indicated on the spareparts catalogue.
- Name of the piece and quantity required.
- Method of shipping. Transport expenses run of the purchaser.
- **NOTE:** The terms left or right, indicated on the name, are meant to be understood always facing the plough from its rear view. When it comes to supposed-to-break gear, rights are considered ll those that are part of the body that drifts to the righth and viceversa.

Note on warranty: must be clearly specified if the spare parts order are ordered under warranty time. The manufacturer will be the one to decide if the order stands to warranty or not when replacing the pieces. Plus, warranty loses all its value if:

- Repairs Unauthorized by the manufacturer are made, unoriginal spare parts and bolts are inadequate.
- User goes through the power limit stated on the technical data sheet, or abnormal maneuvers are made.



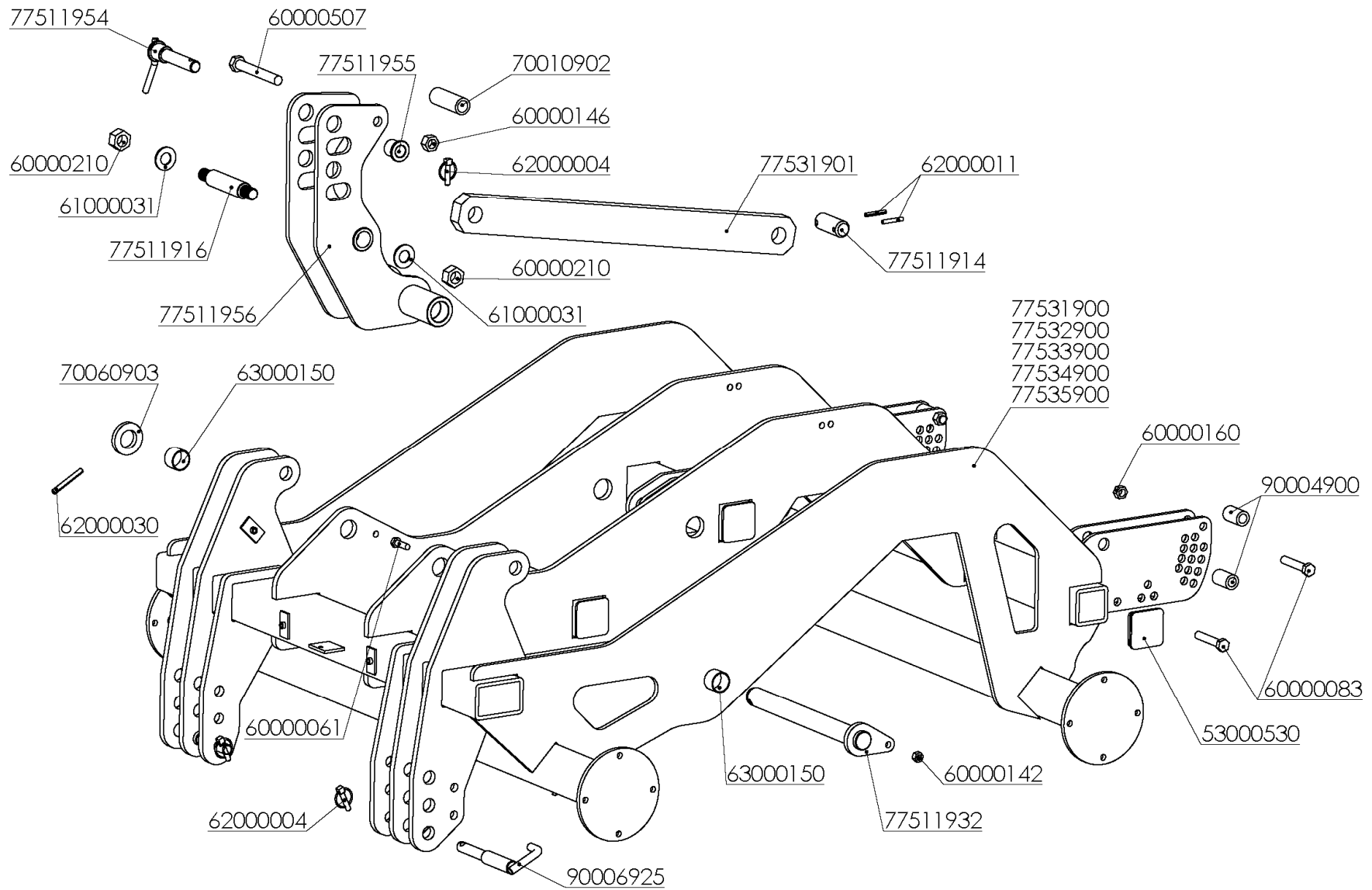


Index

FRAM E REPTILL	17
ASSEM BLY M IN IVD	19
ARM S FRAM E REPTILL	21
BODY M ICHEL.....	23
HYDRAULIC SYSTEM FRAM E SHIFT	25
DEPTIH CONTROL RULE	27
BODY M CH M IN IVD	29
M ETAL SKIRTS/DEFLECTORS ASSEM BLY	31
FOLDABLE HEADSTOCK HYDRAULIC SYSTEM	33
REAR ROLLER ASSEM BLY	35
ASSEM BLY REPTILL 8-2	39
ASSEM BLY REPTILL 10-2	40
ASSEM BLY REPTILL 10-4	41
ASSEM BLY REPTILL 12-4	42
ASSEM BLY REPTILL 12-4 W ITHOUT FOLDABLE HEADSTOCK	43
ASSEM BLY REPTILL 12-4 W ITH FOLDABLE HEADSTOCK	44
ASSEM BLY REPTILL 14-4	45
ASSEM BLY REPTILL 16-6	46



FRAM E REPTILI

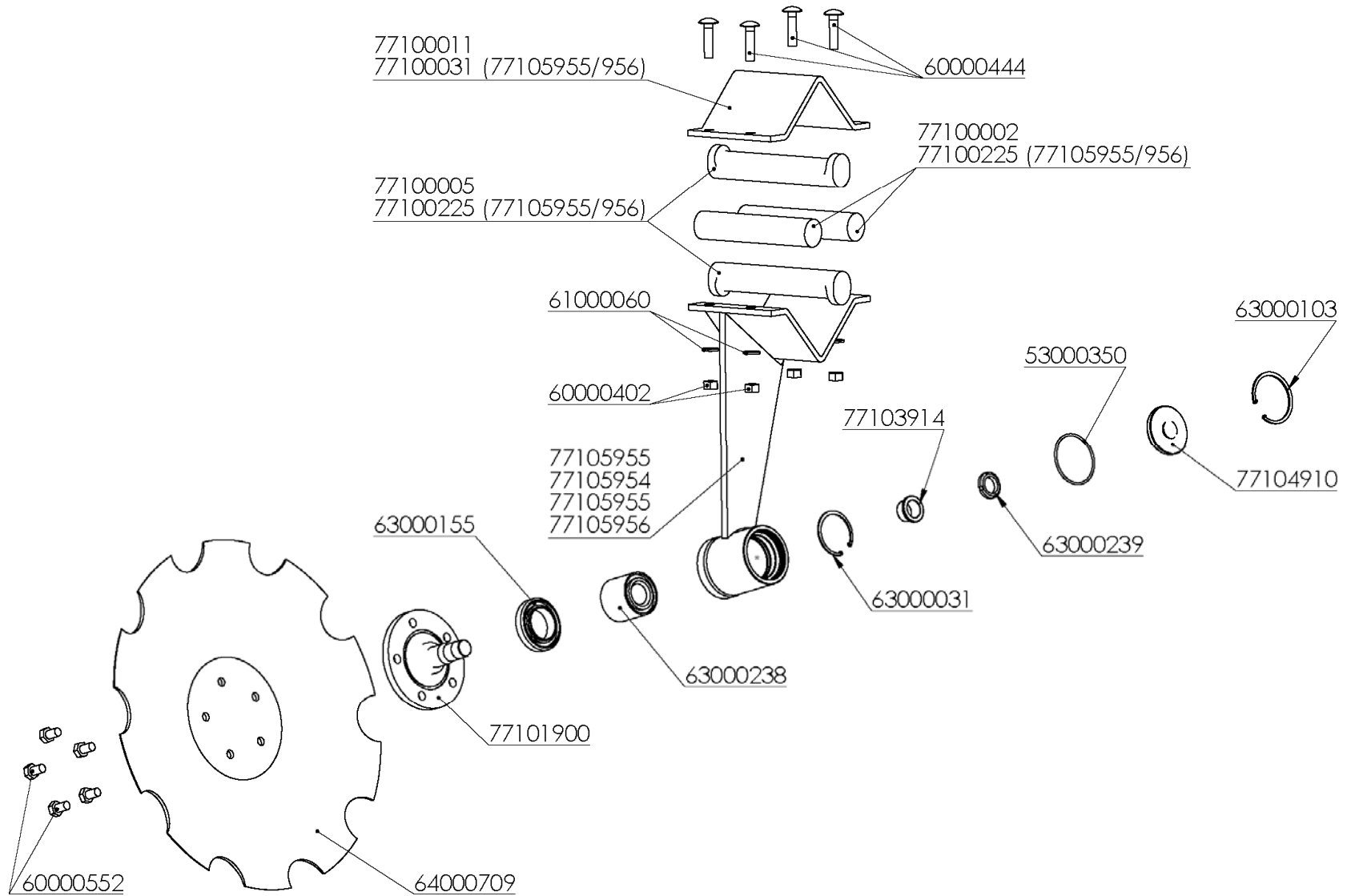


FRAM E REPTIL

REFERENCIA	DESCRIPCIÓN	REFERENCIA	DESCRIPCIÓN
53000530	TAPON PVC NEGRO 70x70x5	63000150	CASQ.FRICCION PAP 4030 P10
60000061	TORN.EXAG.DIN-933 12* 40 8.8 ZINC.	70010902	SEP.B.P.36/25* 96mm.
60000083	TORN.EXAG.DIN-931 16* 90 8.8	70060903	ARAND.P/BULON PLEG.CH/MCH/DISC
60000142	TUER.AUTO.DIN-980 12 8.8 ZINC.	77511914	BULON D=34,8*86mm.CILIND.ABAT.MINIVID
60000146	TUER.AUTO.DIN-980 20 10.9 ZINC. CON SOBREGOLPE	77511916	BULON ROSCADO CILIND.ABAT.MINIVID (D/22)
60000160	TUER.EXAG.DIN-934 16 8.8 ZINC.	77511932	BULON D=40*425mm.ABAT.REPTILL
60000210	TUER.AUTO.DIN-985 1" SAE 8.8 ZN.	77511954	BULON D=25/35,2*151mm.3er.PTO.TORR.ABAT.
60000507	TORN.EXAG.DIN-931 20*150 8.8 ZINC.	77511955	CASQ.D= 45/35,2/25,2*37mm.TORR.ABAT.
61000031	ARAND.STANDAR S/BISEL CL-26 ZINC.(50x27x3)	77511956	TÊTE/TOURELLE PLIANTE REPTILL (D/22)
61000031	ARAND.STANDAR S/BISEL CL-26 ZINC.(50x27x3)	77531900	BAST.REPTILL-12
62000004	PASADOR ANILLA 10 ZINC.	77531901	TIRANTE REPTILL
62000011	PASADOR ELAST.DIN-1481 8* 50 ZINC.	90004900	SEP.B.P.32/20* 52,5mm.
62000030	PASADOR ELAST.DIN-1481 10* 80 ZINC.	90006925	BULON D=28/22*200mm.ENG.REPTILL



ASSEMBLY M NMD

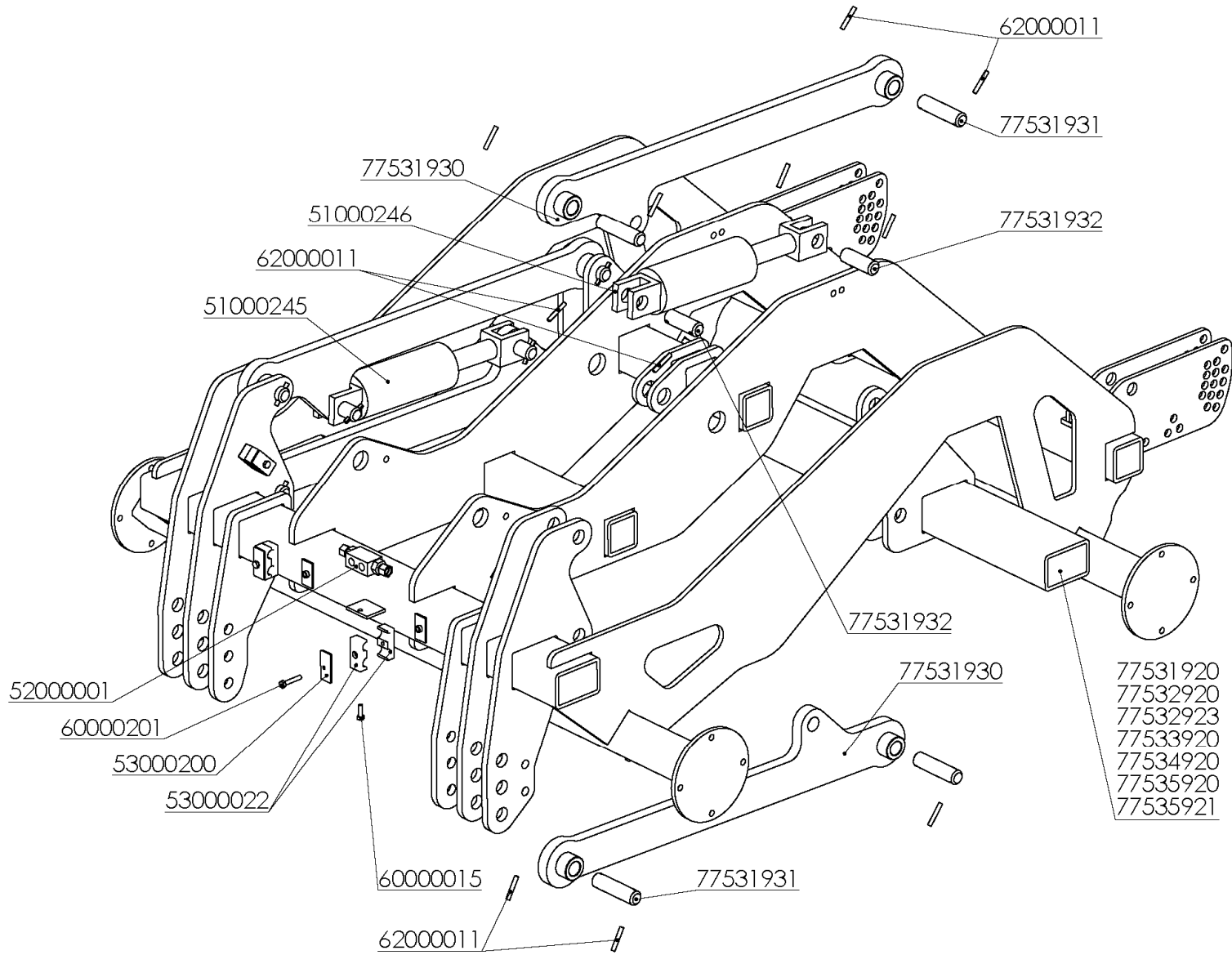


ASSEMBLY MINIVID

REFERENCIA	DESCRIPCIÓN	REFERENCIA	DESCRIPCIÓN
53000350	JUNTA TORICA 69.44-3.53	64000709	DISCO CONCAVO MUESCADO GRADA RAP/VIÑA 20" 6mm.
60000402	TUER.EXAG.DIN-934 12 10.9 ZINC.	77100002	SUSPENSION ELASTICA D=40*200mm.
60000444	TORN.ARADO DIN-603 12*50 10.9 ZINC.	77100005	SUSPENSION ELASTICA D=40*226mm.C/RESALTE
60000552	TORN.EXAG.DIN-933 12* 20 8.8 ZINC.	77100031	LLANTA AMARRE DISCO NON-STOP VBC
61000060	ARAND.DIN-125 300HV 12 ZINC.	77100225	SUSPENSION ELASTICA D=40*160mm.
63000031	ANILLO ELASTICO DIN-472 62	77101900	CONJ.EJE DISCO MINIDISC
63000103	ANILLO ELASTICO DIN-472 72	77103914	CASQUILLO TUERCA CONJ.MINIDISC (D/16)
63000155	RETEN AP6 45*75*12,5	77104910	TAPA BUJE DISCOS MINIDISC (D/07)
63000238	CARTUCHO GRADA 20"	77105955	CONJ.BRAZO CENTRAL IZQD.MINIVID (D/16)
63000239	TUERCA FIJACION KMA 5		



ARM S FRAME REPTILI

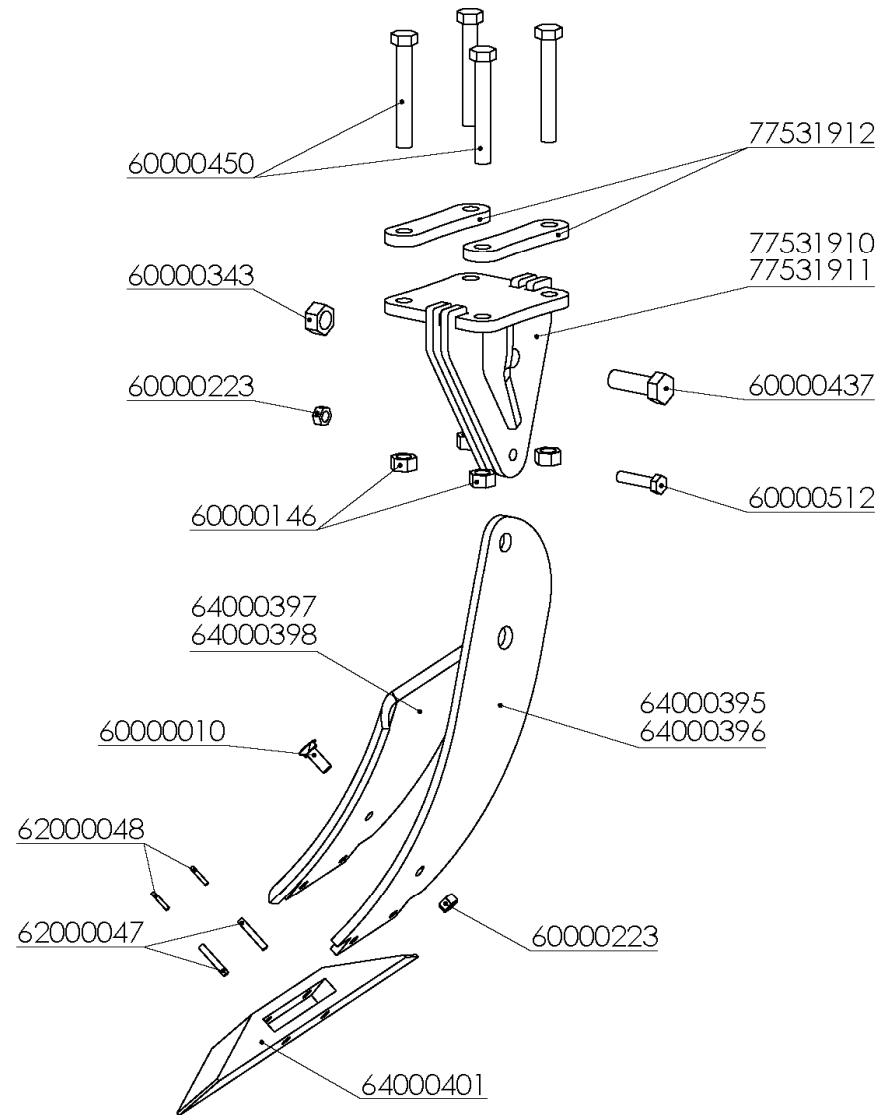


ARMS FRAME REPTILL

REFERENCIA	DESCRIPCIÓN	REFERENCIA	DESCRIPCIÓN
51000245	CILIND.ELEV.PAÑO REPTILL 42-90-125 HORQ.	60000201	TORN.EXAG.DIN-931 8* 45 8.8 ZINC.
51000246	CILIND.ELEV.PAÑO REPTILL 40-80-125 HORQ.	77531920	ARMS FRAME REPTILL
52000001	VALV.BLOQUEO ZINC.12 VBD38	77531930	BIELA REPTILL
53000022	ABRAZ.DOBLE D=19mm. 1D19PP	77531931	BULON D=29,7*125mm.BIELA REPTILL
53000200	PLACA RFZO.AB.DOBLE 19 GD3D	77531932	BULON D=29,7*90mm.CILINDRO REPTILL
60000015	TORN.EXAG.DIN-933 8* 25 8.8 ZINC.		



BODY M ICHEI

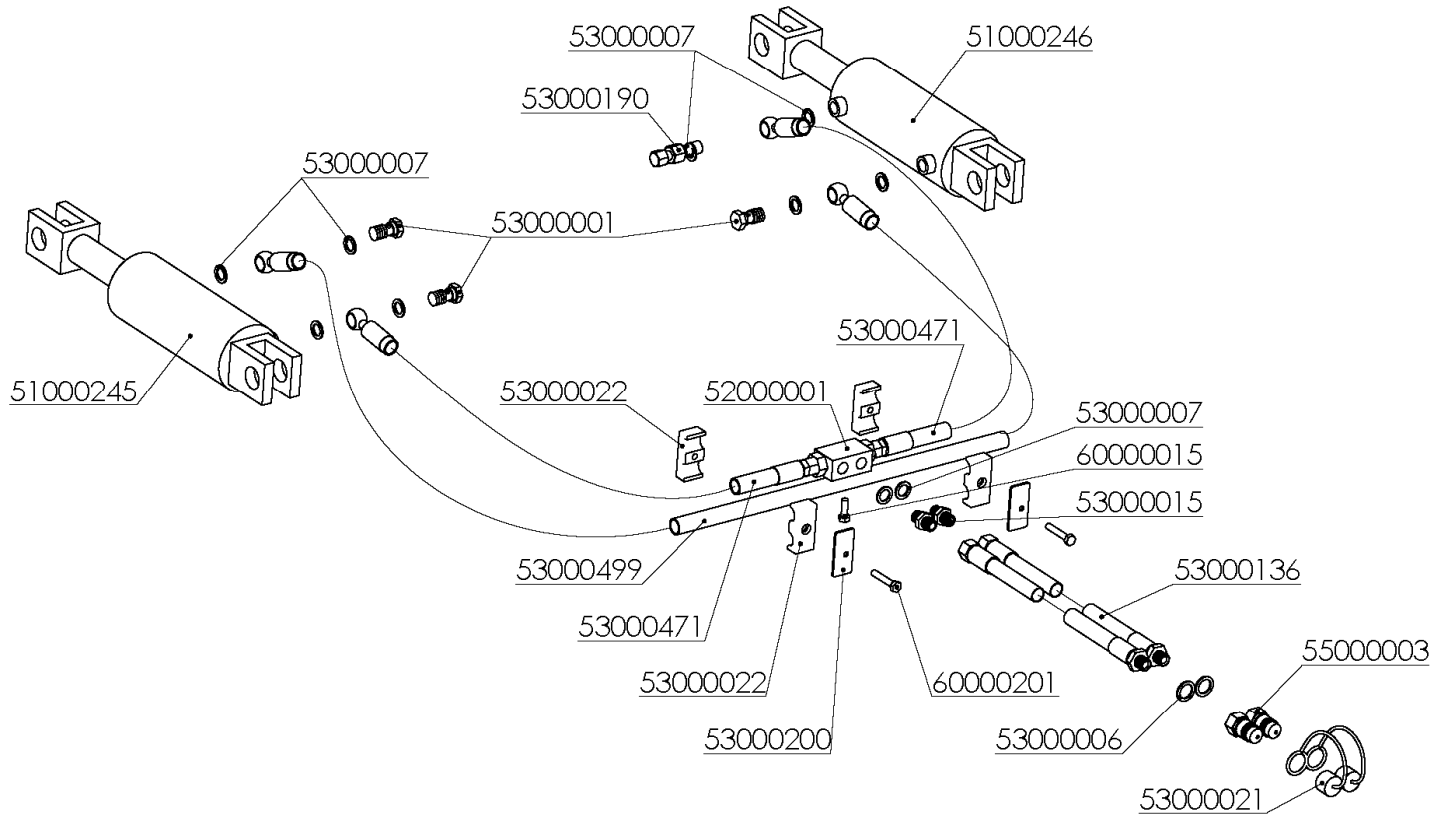


BODY MICHEL

REFERENCIA	DESCRIPCIÓN	REFERENCIA	DESCRIPCIÓN
60000010	TORN.ALLEN DIN-7991 14* 40 10.9 ZINC.	62000047	PASADOR ELAST.DIN-1481 14*50
60000146	TUER.AUTO.DIN-980 20 10.9 ZINC. CON SOBREGOLPE	62000048	PASADOR ELAST.DIN-1481 8*50
60000223	TUER.AUTO.DIN-980 14 8.8 ZINC.	64000395	BRAZO DESCOMPACTADOR 600-D
60000343	TUER.AUTO.DIN-980 24 8.8 ZINC.	64000397	PROTECTOR DESCOMPACTADOR 600-D
60000437	TORN.EXAG.DIN-931 24*70 8.8 ZINC.	64000401	PUNTA DESCOMPACTADOR 600
60000450	TORN.EXAG.DIN-931 20*140 8.8 ZINC.	77531910	AMARRE DCHO.REPTILL
60000512	TORN.EXAG.DIN-931 14* 60 8.8 ZINC.	77531912	PLACA SUJECION AMARRE REPTILL



HYDRAULIC SYSTEM FRAME SHIFT

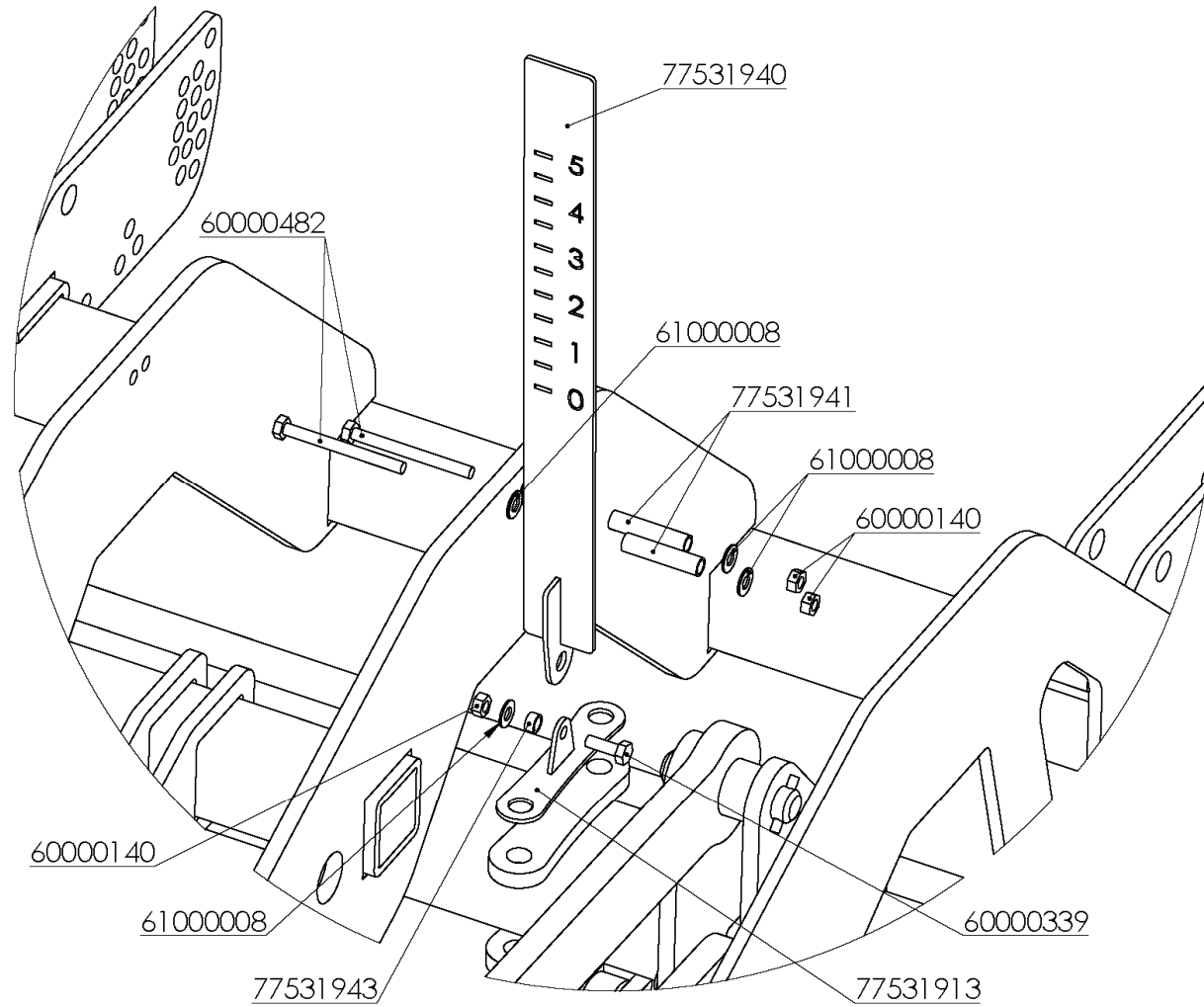


HYDRAULIC SYSTEM FRAME SHIFT

REFERENCIA	DESCRIPCIÓN	REFERENCIA	DESCRIPCIÓN
51000245	CILIND.ELEV.PAÑO REPTILL 42-90-125 HORQ.	53000136	LATIG.R2-3/8*1400mm.MF-1/2/TL-3/8
51000246	CILIND.ELEV.PAÑO REPTILL 40-80-125 HORQ.	53000190	TORNILLO REGULADOR 3/8 4022R
52000001	VALV.BLOQUEO ZINC.12 VBD38	53000200	PLACA RFZO.AB.DOBLE 19 GD3D
53000001	TORNILLO SIMPLE 3/8 4022	53000471	LATIG.R2-3/8* 970mm.OR-3/8/TL-18
53000006	JUNTA METAL/GOMA 1/2" 11603	53000499	LATIG.R2-3/8*2000mm.OR/OR-3/8
53000007	JUNTA METAL/GOMA 3/8" 11602	55000003	ADAPTADOR E.R.FASTER 1/2" 30410108
53000015	UNION MACHO 3/8 4062	60000015	TORN.EXAG.DIN-933 8* 25 8.8 ZINC.
53000021	PROTECTOR E.R.MACHO 1/2" ROJO 5029-4PR	60000201	TORN.EXAG.DIN-931 8* 45 8.8 ZINC.
53000022	ABRAZ.DOBLE D=19mm. 1D19PP		



DEPTH CONTROL RULE

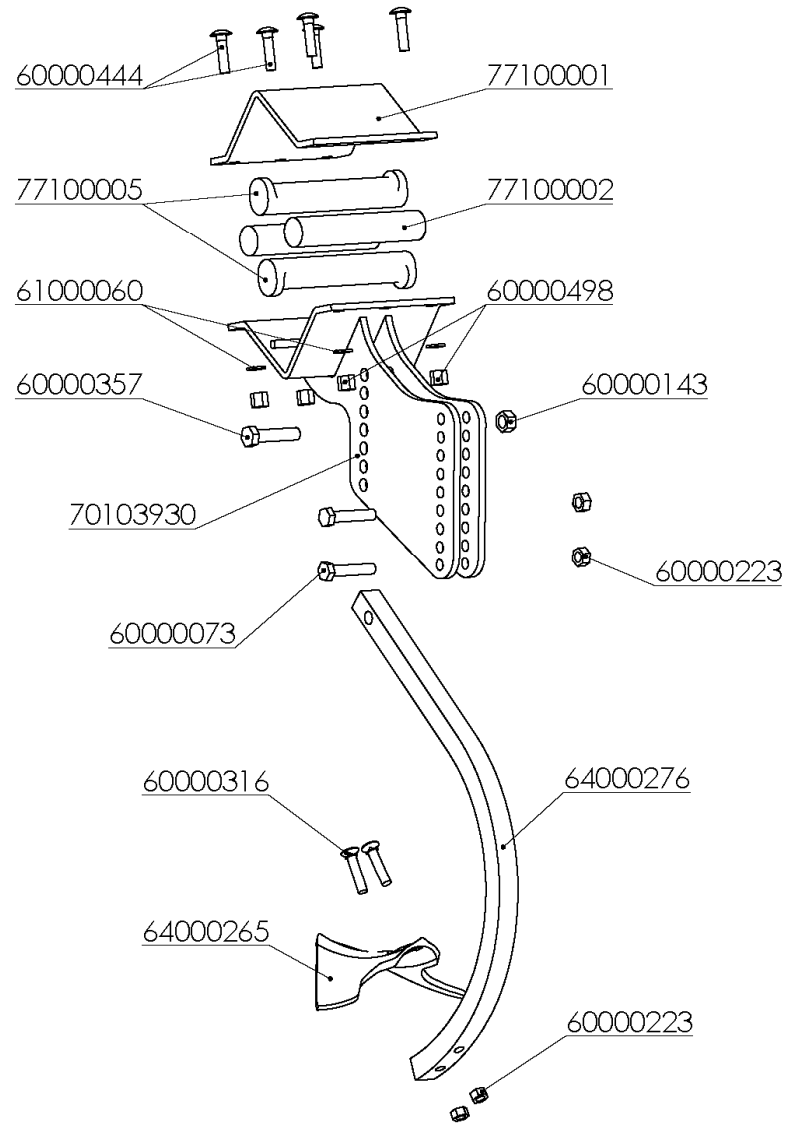


DEPTH CONTROL RULE

REFERENCIA	DESCRIPCIÓN
60000140	TUER.AUTO.DIN-980 10 8.8 ZINC.
60000339	TORN.EXAG.DIN-933 10* 30 8.8 ZINC.
60000482	TORN.EXAG.DIN-931 10*110 8.8 ZINC.
61000008	ARAND.DIN-125 12 ZINC.
77531913	BASE REGLA REPTILL
77531940	REGLA REPTILL
77531941	SEP.TUBO 16*12*70mm.
77531943	SEP.TUBO 16*12*8mm.



BODY MCHMINVD

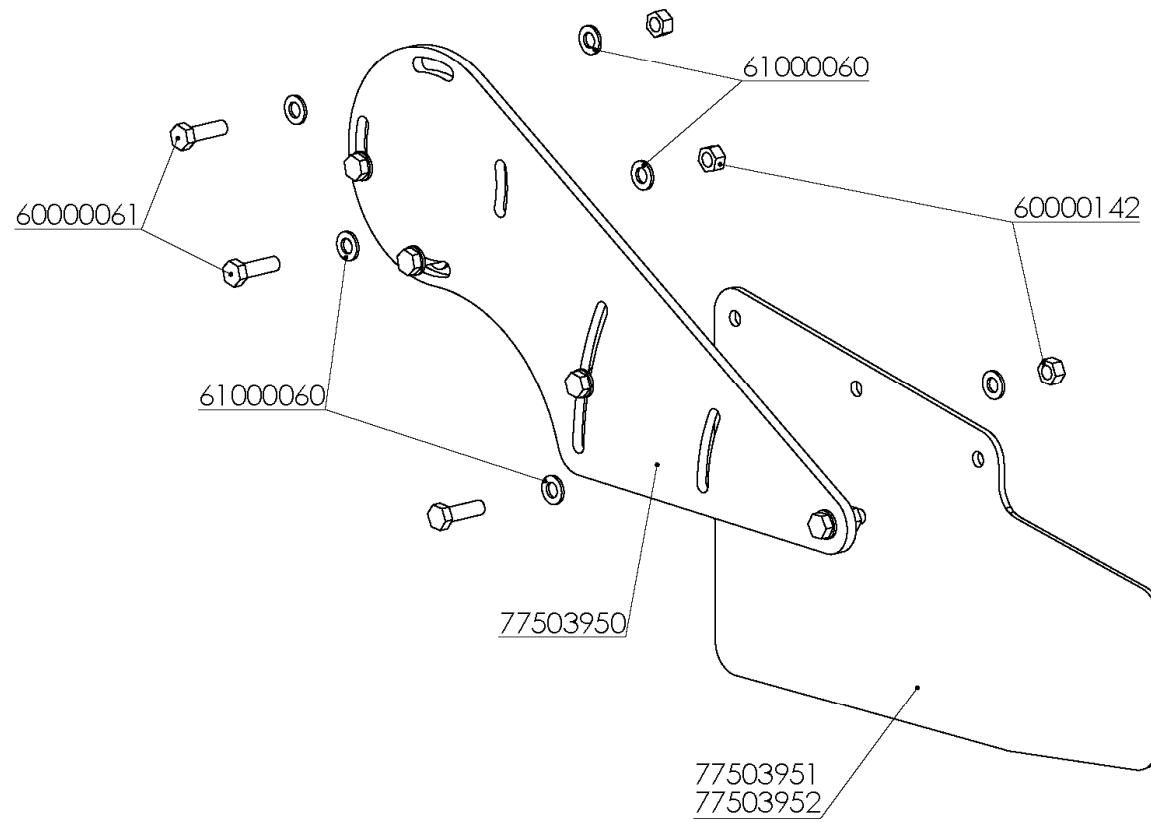


BODY MCH MINIVID

REFERENCIA	DESCRIPCIÓN	REFERENCIA	DESCRIPCIÓN
60000073	TORN.EXAG.DIN-931 14* 70 8.8 ZINC.	61000060	ARAND.DIN-125 300HV 12 ZINC.
60000143	TUER.AUTO.DIN-980 16 8.8 ZINC.	64000265	REJA PIÑA C-4-A BINADORA C/N
60000223	TUER.AUTO.DIN-980 14 8.8 ZINC.	64000276	BRAZO CHISEL 30*30 (T.H.)
60000316	TORN.ARADO DIN-608/934 12*55 8.8	70103930	AMARRE MCH MINIVID
60000357	TORN.EXAG.DIN-931 16* 70 8.8	77100002	SUSPENSION ELASTICA D=40*200mm.
60000444	TORN.ARADO DIN-603 12*50 10.9 ZINC.	77100005	SUSPENSION ELASTICA D=40*226mm.C/RESALTE
60000498	TUER.ABARCON DIN-6330B 12 10.9 ZINC.	77100101	PLACA SUP.AMARRE MCH



METAL SKIRTS/DEFLECTORS ASSEMBLY

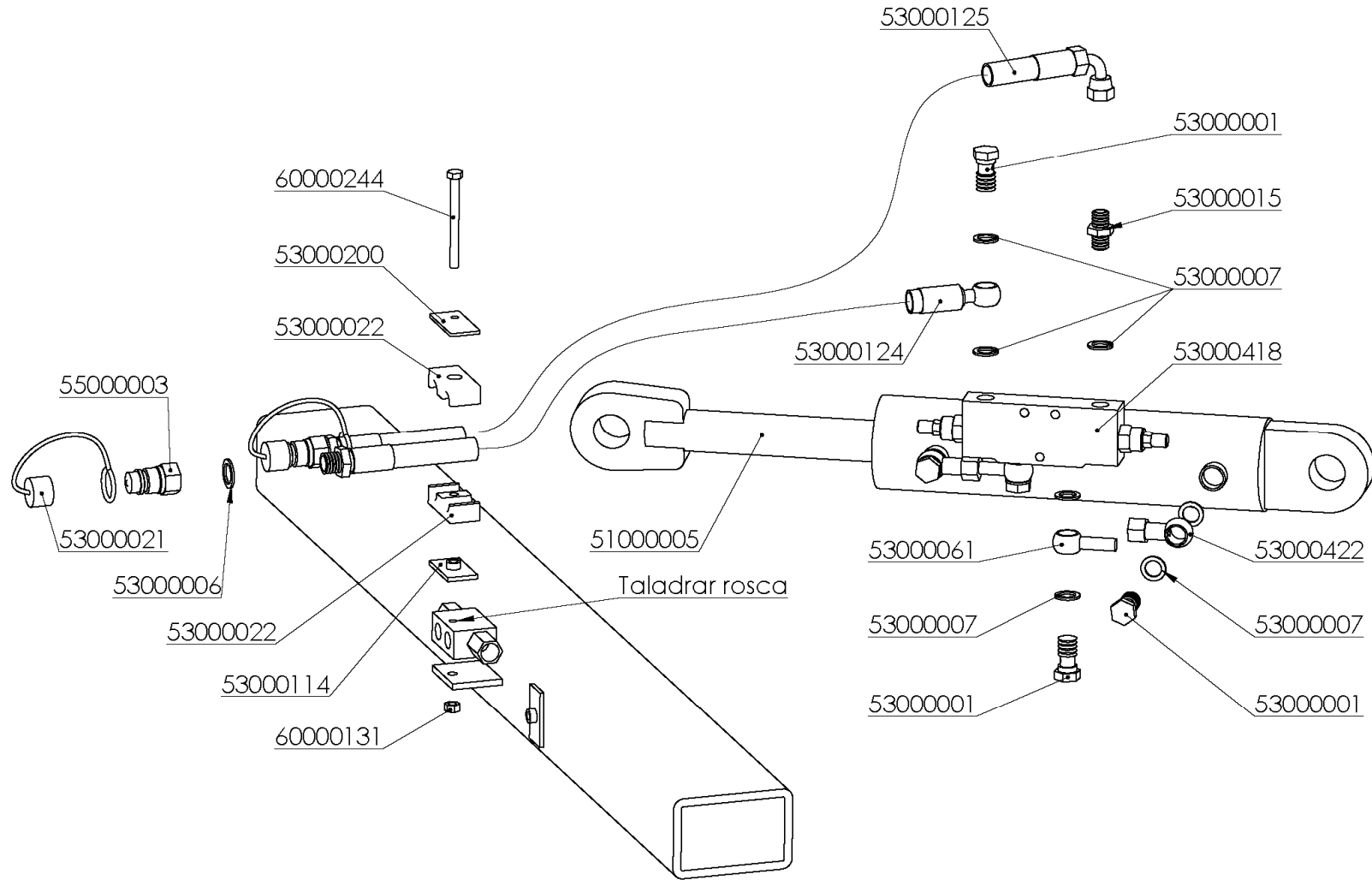


METAL SKIRTS/DEFLECTORS ASSEMBLY

REFERENCIA	DESCRIPCIÓN
60000061	TORN.EXAG.DIN-933 12* 40 8.8 ZINC.
60000142	TUER.AUTO.DIN-980 12 8.8 ZINC.
61000060	ARAND.DIN-125 300HV 12 ZINC.
77503950	PLACA SOP.FALDON REPTILL
77503951	FALDON METALICO IZQDO.REPTILL
77503952	FALDON METALICO DCHO.REPTILL



FOLDABLE HEADSTOCK HYDRAULIC SYSTEM

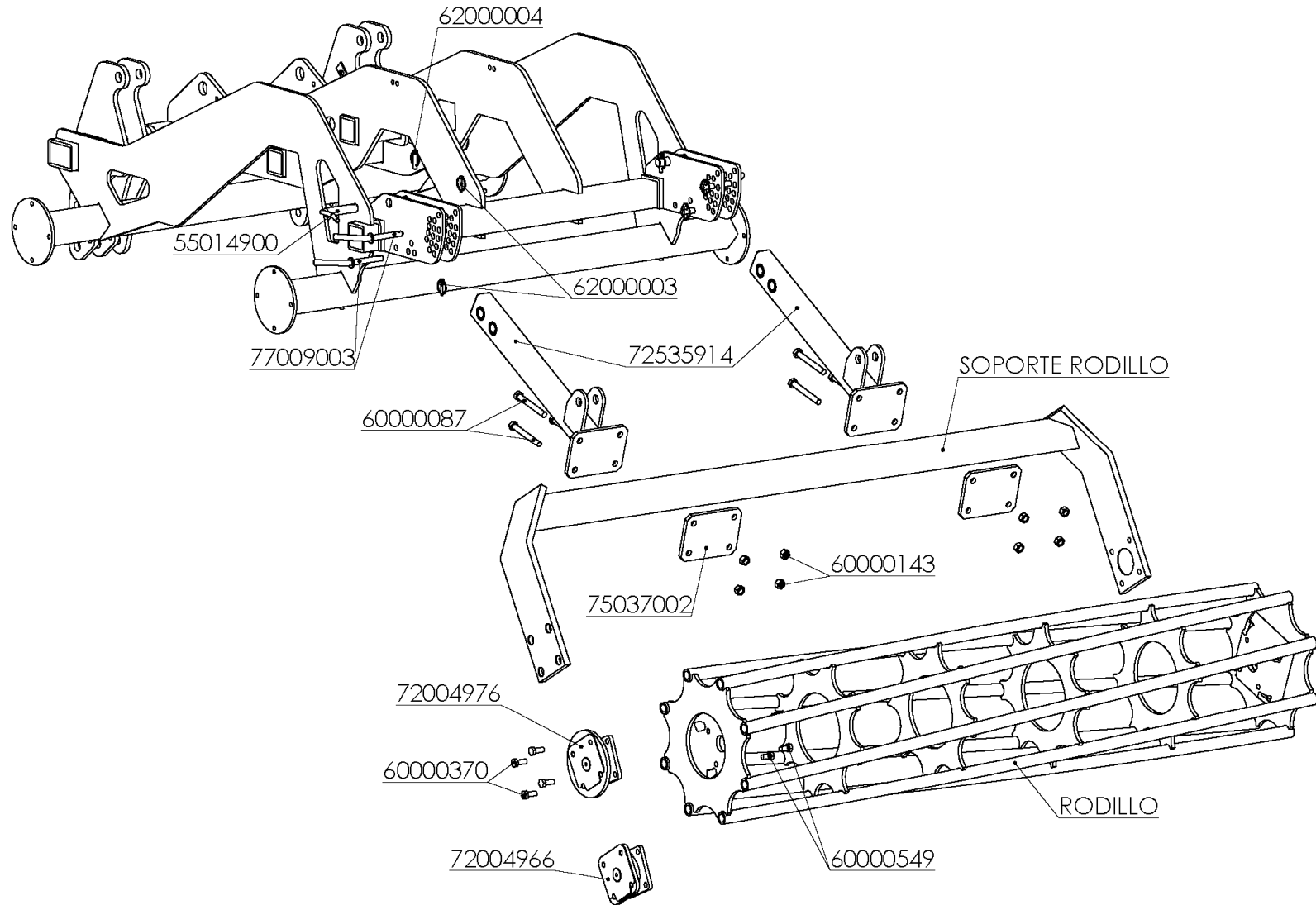


FOLDABLE HEADSTOCK HYDRAULIC SYSTEM

REFERENCIA	DESCRIPCIÓN	REFERENCIA	DESCRIPCIÓN
51000005	CILIND.ABAT.TORRETA VIÑERO 45-100-240 ROTULAS	53000124	LATIG.R2-3/8*2250mm.MF-1/2/OR-3/8
53000001	TORNILLO SIMPLE 3/8 4022	53000125	LATIG.R2-3/8*2290mm.MF-1/2/CTL-3/8
53000006	JUNTA METAL/GOMA 1/2" 11603	53000200	PLACA RFZO.AB.DOBLE 19 GD3D
53000007	JUNTA METAL/GOMA 3/8" 11602	53000418	VALV.OVERCENTER VBCD 3/8 DE-A V0422
53000015	UNION MACHO 3/8 4062	53000422	ESFERICO 3/8" + UNION TUBO/TUBO 12 4002E+12L
53000021	PROTECTOR E.R.MACHO 1/2" ROJO 5029-4PR	55000003	ADAPTADOR E.R.FASTER 1/2" 30410108
53000022	ABRAZ.DOBLE D=19mm. 1D19PP	60000131	TUER.AUTO.DIN-980 8 8.8 ZINC.
53000061	ESFERICO 3/8" TUBO 12mm.L=200	60000244	TORN.EXAG.DIN-931 8* 90 8.8 ZINC.
53000114	PLACA SOLDAR AB.DOBLE 19 SP3D		



REAR ROLLER ASSEMBLY



REAR ROLLER ASSEMBLY

REFERENCIA	DESCRIPCIÓN	REFERENCIA	DESCRIPCIÓN
55014900	BULON D=25*110mm.BLOQUEO/BRAZO ROULEAU	72001921	ROULEAU 8 BARRAS 2,15m/480
60000087	TORN.EXAG.DIN-931 16*130 8.8 ZINC.	72004966	CONJ.BUJE RFZD.ROULEAU (D/20) - CUADRADO (FUNDIDO) REPUESTO
60000143	TUER.AUTO.DIN-980 16 8.8 ZINC.	72004976	CONJ.BUJE RFZD.ROULEAU (D/20) - REDONDO (FUNDIDO) REPUESTO
60000191	TORN.EXAG.DIN-933 14* 30 8.8 ZINC.	72533921	SOP.ROULEAU MINIVID 2,15m.
60000370	TORN.EXAG.DIN-933 14* 35 8.8 ZINC.	72535914	BRAZO SOP.ROD.REPTILL
60000549	TORN.EXAG.DIN-933 14*25 8.8	75037002	PLACA AMARRE ROULEAU
62000003	PASADOR ANILLA 6 ZINC.	77009903	BULON REG.ROULEAU MCH
62000004	PASADOR ANILLA 10 ZINC.		



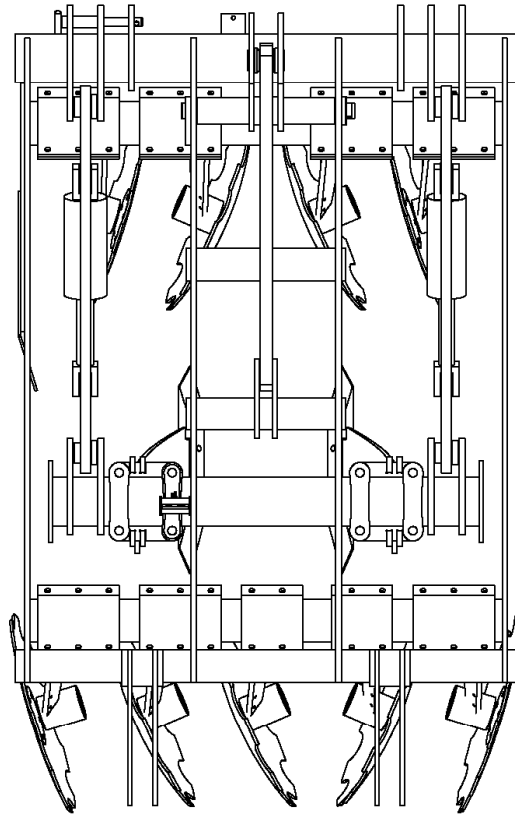
REAR ROLLER ASSEMBLY

METROS	SOP. ROD.	ROD. CRG.	ROD. 8 MUESC.	ROD. 8 BARR.	ROD. 10 MUESC.	ROD. 10 BARR.
1,15	72533912	72611911	72602911	72031911	72132911	72032911
1,40	72533914	72611915	72602914	72031914	72132914	72032914
1,65	72533917	72611916	72602917	72031917	72132917	72032917
1,90	72533918	72611919	72602919	72031919	72132919	72032919
2,15	72533921	72611922	72602922	72031921	72132921	72032921
2,30	72533923	72611923	72602923	72031923	72132923	72032923
2,40	72533924	72611924	72602924	72031924	72132924	72032924

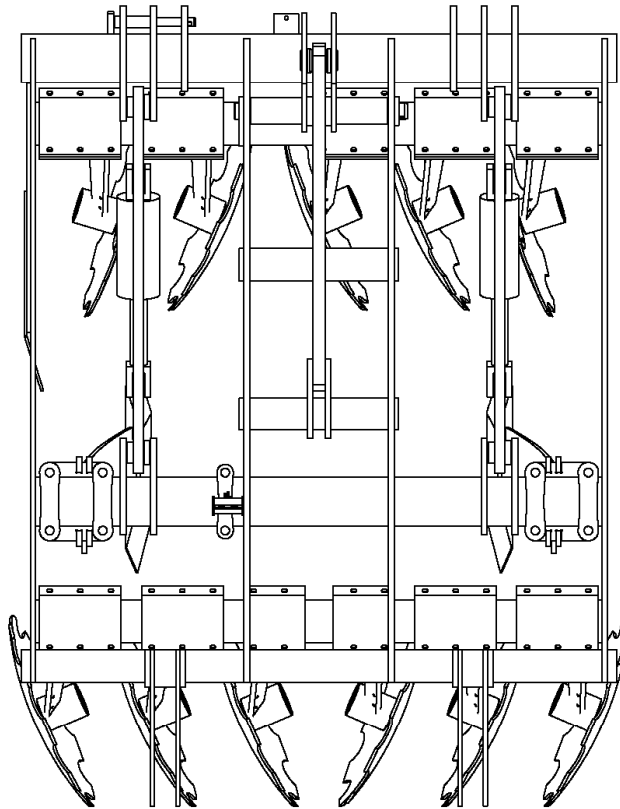




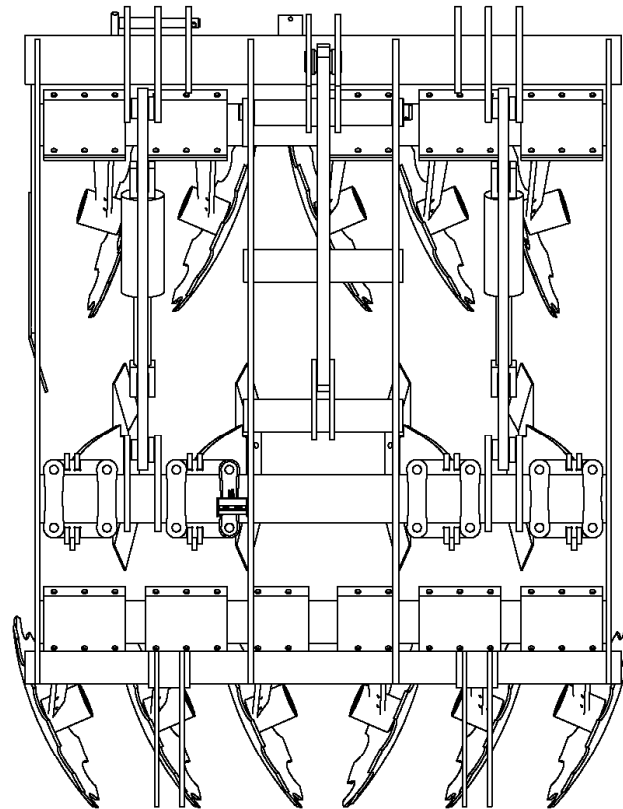
ASSEMBLY REPTILL 8-2



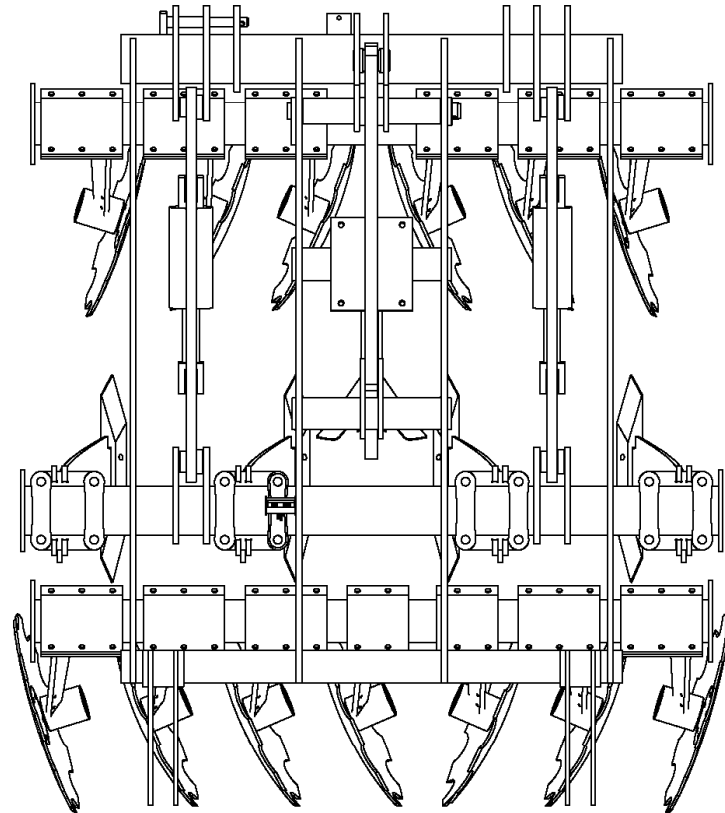
ASSEMBLY REPTILL 10-2



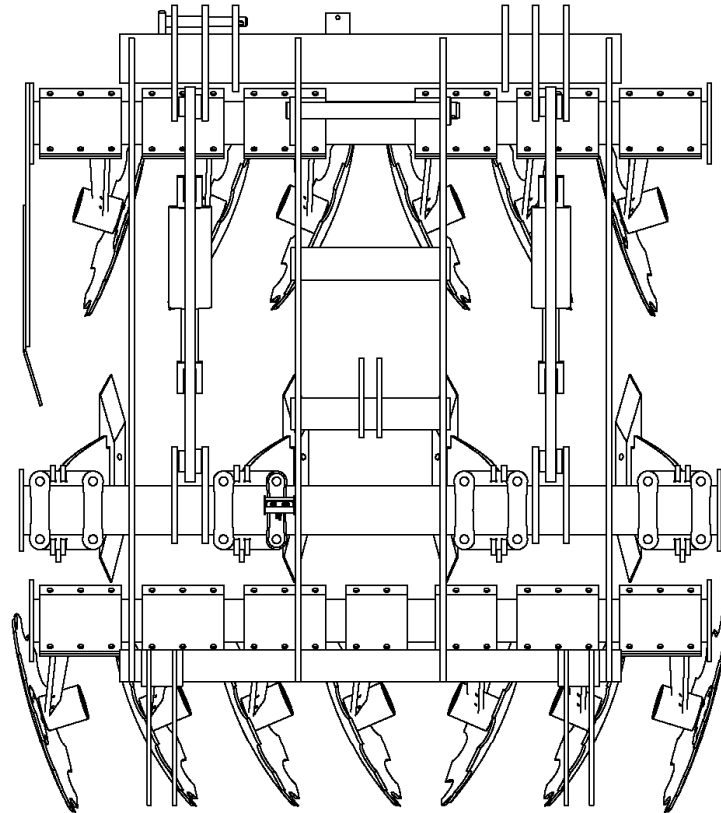
ASSEMBLY REPTILL 10-4



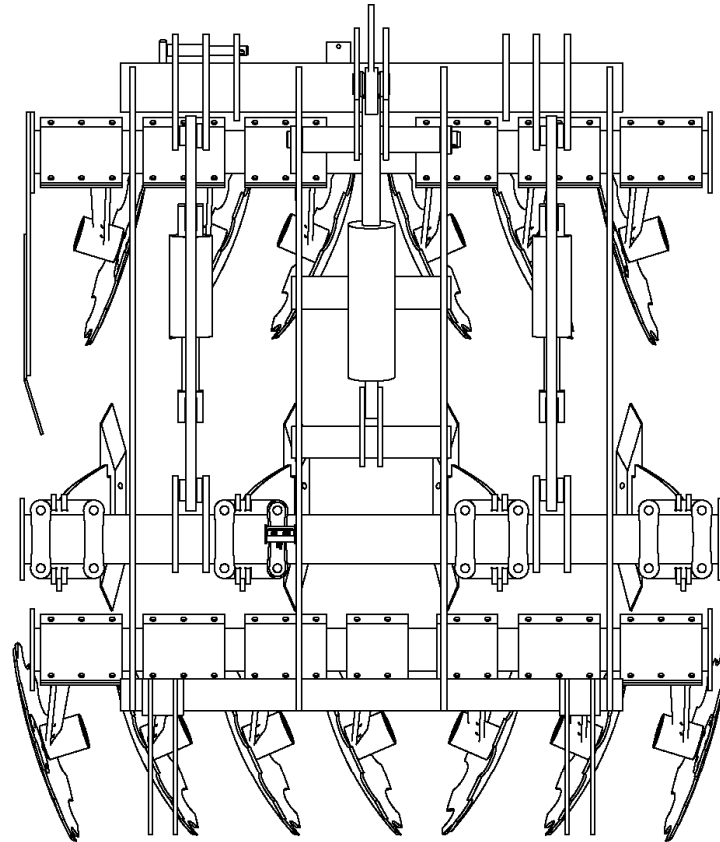
ASSEMBLY REPTILL 12-4



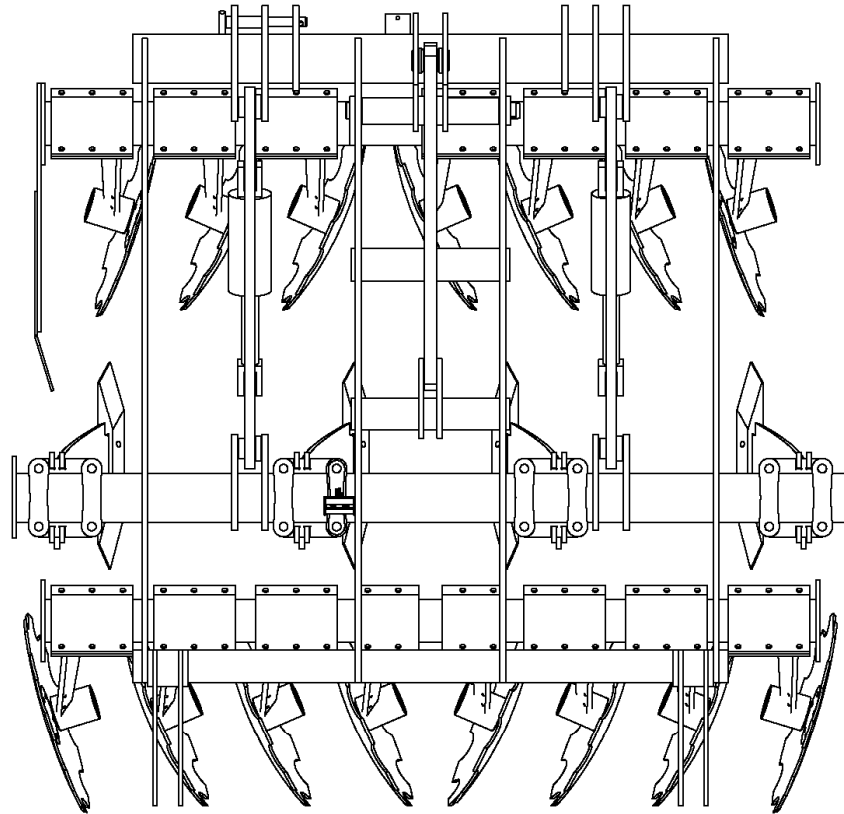
ASSEMBLY REPTILL 12-4 W IHOUT FOLDABLE HEADSTOCK



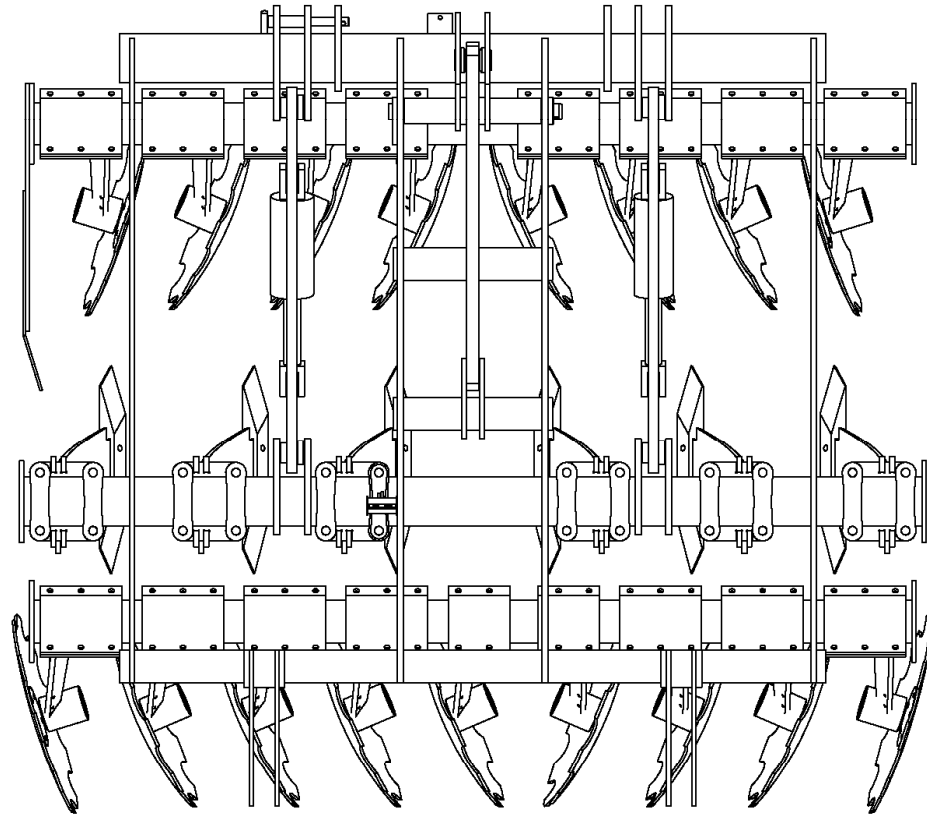
ASSEMBLY REPTILL 12-4 W ITH FOLDABLE HEADSTOCK



ASSEMBLY REPTILL 14-4



ASSEMBLY REPTILL 16-6





Polígono Industrial, C/ TAF, P163
34200 - Venta de Baños
Palencia - España



+34 979 76 10 11



comercial@ovlac.com



www.ovlac.com